

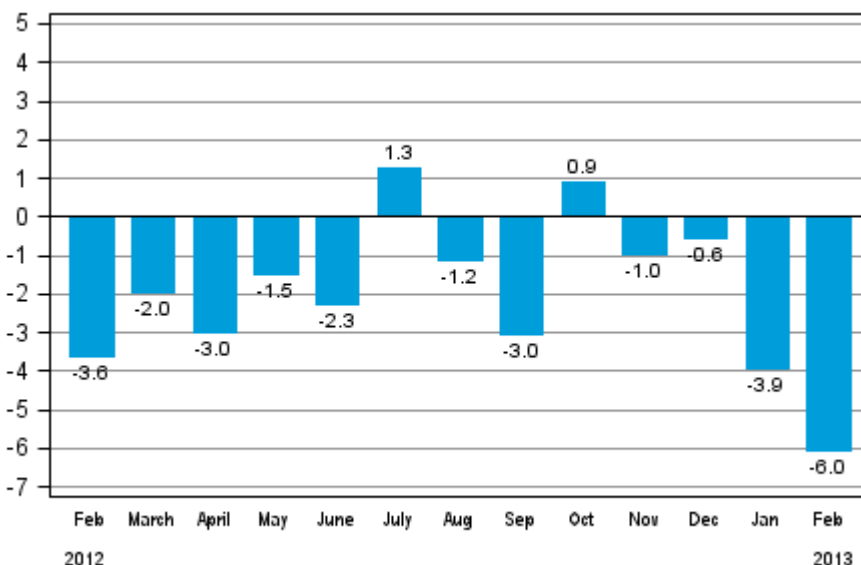
Volume index of industrial output

2013, February

Industrial output decreased by 6 per cent year-on-year in February

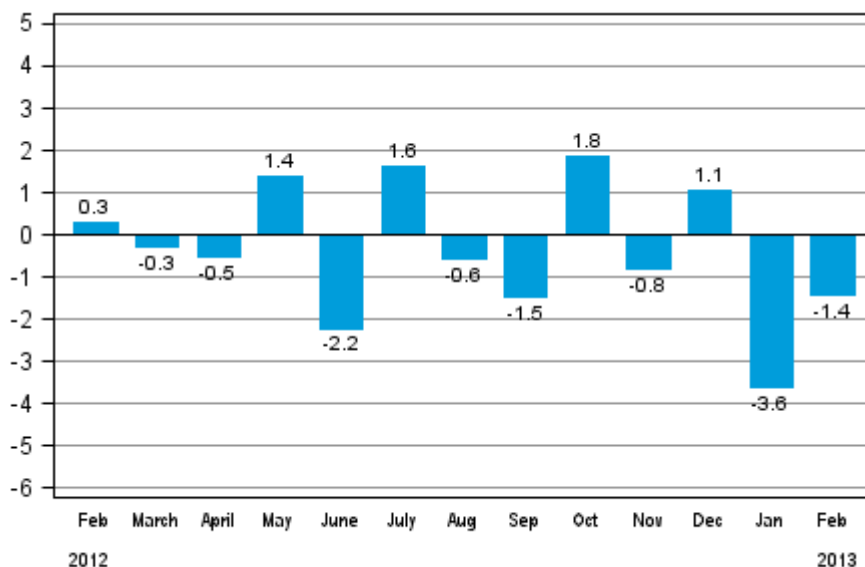
According to Statistics Finland, output of total industries adjusted for working days was 6 per cent lower in February 2013 than in February 2012.

Working day adjusted change in industrial output (BCDE) from corresponding month previous year, %, TOL 2008



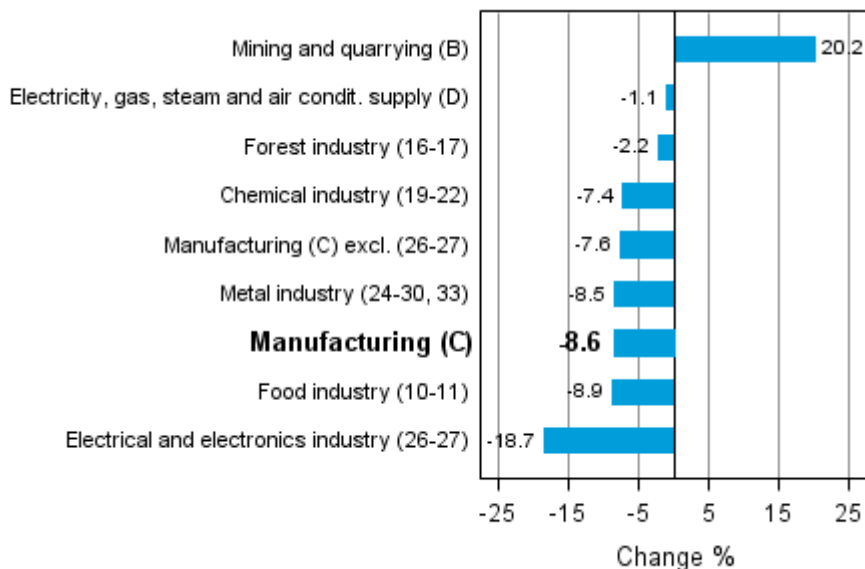
Seasonally adjusted industrial output went down by 1.4 per cent from January to February. In January, seasonally adjusted output was 3.6 per cent lower than in December. In December, output increased by 1.1 per cent from the previous month.

Seasonally adjusted change in industrial output (BCDE) from previous month, %, TOL 2008



Industrial output diminished in almost all main industries in February. Output decreased most in the electrical and electronics industry, or by 18.7 per cent. In the food industry, output diminished by 8.9 per cent from February 2012 and in the metal industry by 8.5 per cent. Among main industries, output only increased in mining and quarrying, which grew by good 20 per cent compared with the year before.

Working day adjusted change in industrial output by industry 2/2012-2/2013, %, TOL 2008



Capacity utilisation rate in manufacturing (C) was 79.1 per cent in February, or 0.7 percentage points lower than one year earlier. In the forest industry, capacity utilisation rate was 83.1 per cent in February, or 1.9 percentage points higher than in February 2012. In the metal industry, capacity utilisation rate was 80.3 per cent in February, which was 0.7 percentage points lower than one year earlier.

Revised data for February 2013 will be published at 9 am on 10 May 2013 in connection with the release of industrial output data for March 2013. The revision is influenced by the estimation used in the latest release which concerns the periodic tax return data used for enterprises with fewer than 50 employees. Because of the method used, seasonally adjusted figures for previous months may change even if the original figures do not become revised. The seasonally adjusted figures will also be adjusted for working days.

The base year 2010 is utilised for the calculation of the Volume Index of Industrial Output starting from the statistics for January 2013.

Contents

Industrial output decreased by 6 per cent year-on-year in February	5
--	---

Tables

Table 1. Volume index of industrial output, value added, original, working day adjusted, seasonally adjusted change percentage.....	6
---	---

Figures

Appendix figures

Appendix figure 1. Working day adjusted change percentage of industrial output February 2012 /February 2013, TOL 2008.....	7
--	---

Appendix figure 2. Seasonally adjusted change percentage of industrial output January 2013 /February 2013, TOL 2008.....	7
--	---

Appendix figure 3. Trend of industrial output Finland, Germany, Sweden and France (BCD) 2000 - 2013, 2010=100, TOL 2008.....	8
--	---

Revisions in these statistics.....	9
------------------------------------	---

Industrial output decreased by 6 per cent year-on-year in February

According to Statistics Finland, output of total industries adjusted for working days was 6 per cent lower in February 2013 than in February 2012. Seasonally adjusted output went down by 1.4 per cent in February from the month before.

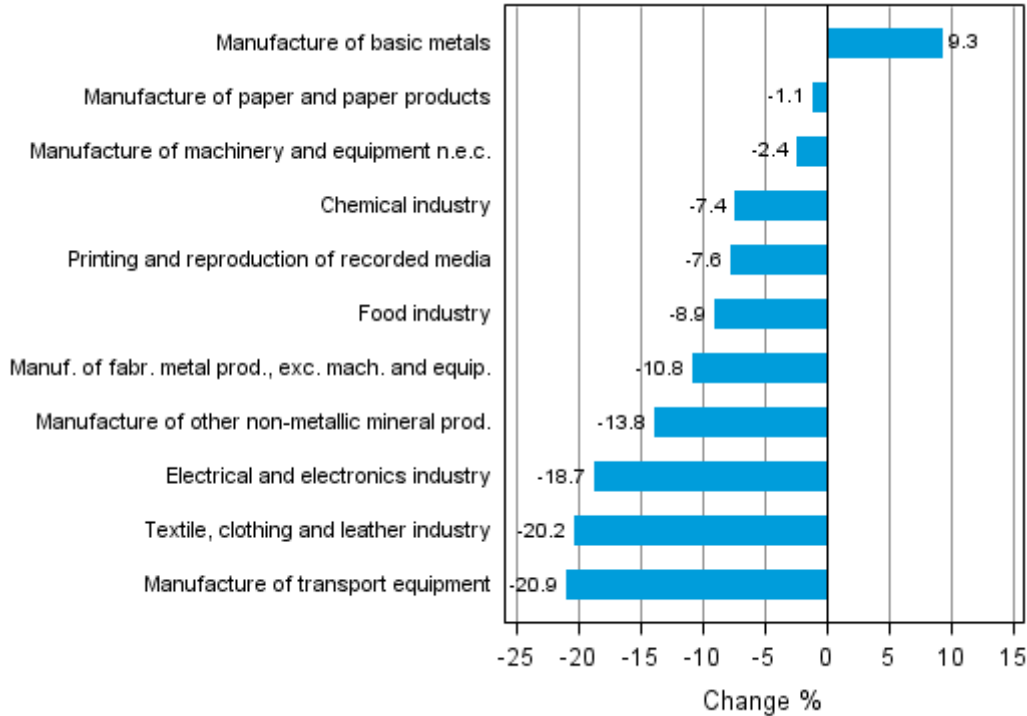
Adjusted for working days, industrial output (C) decreased by 8.6 per cent in February from one year back. Seasonally adjusted industrial output went down by 1.9 per cent from January to February.

Table 1. Volume index of industrial output, value added, original, working day adjusted, seasonally adjusted change percentage

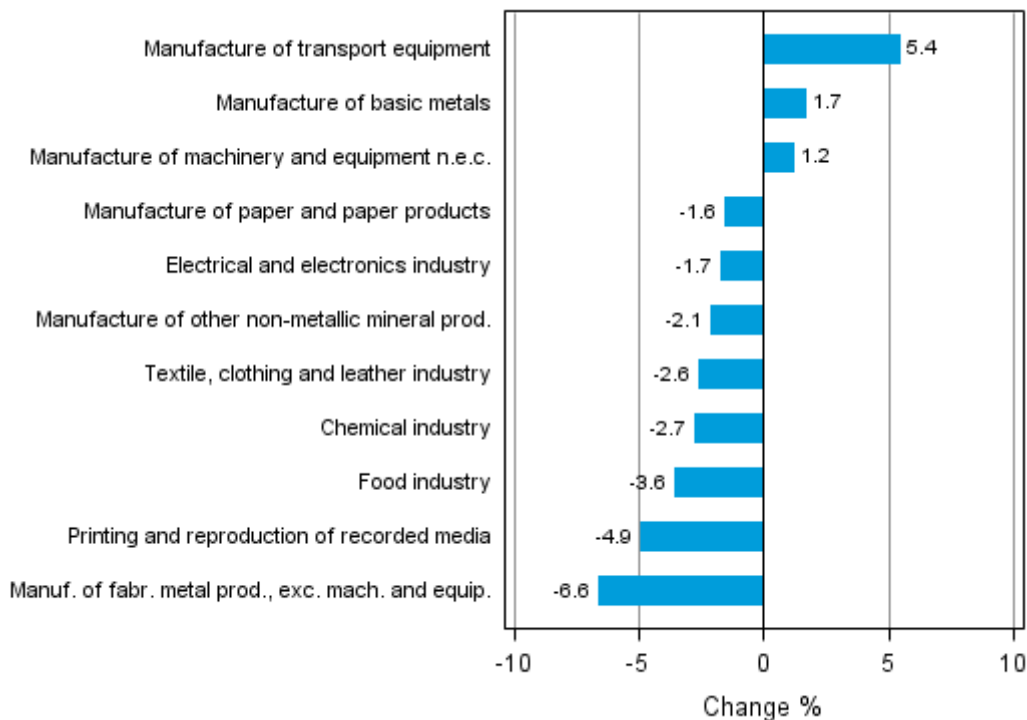
	Value added share	Original change percentage, 2013 FEB / 2012 FEB	Working day adj. change percentage, 2013 FEB / 2012 FEB	Seasonal adj. change percentage, 2013 FEB / 2013 JAN
Industry (Tol 2008)				
Total industries	100,0	-6,1	-6,0	-1,4
B Mining and quarrying	3,8	23,5	20,2	11,2
C Manufacturing	82,9	-7,5	-8,6	-1,9
10 Manufacture of food products	6,2	-9,6	-11,6	-10,4
11 Manufacture of beverages	1,3	8,6	5,6	14,6
13 Manufacture of textiles	0,6	-17,6	-18,3	-6,2
14 Manufacture of wearing apparel	0,4	2,2	2,2	2,2
15 Manufacture of leather and related products	0,3	-39,3	-39,3	-4,9
16 Manufacture of wood and of products of wood and cork, except furniture; manufacture of articles of straw and plaiting materials	3,6	-3,6	-4,7	-1,2
17 Manufacture of paper and paper products	9,5	-1,1	-1,1	-1,6
18 Printing and reproduction of recorded media	1,7	-7,5	-7,6	-4,9
23 Manufacture of other non-metallic mineral products	3,6	-13,0	-13,8	-2,1
24 Manufacture of basic metals	4,2	10,0	9,3	1,7
25 Manufacture of fabricated metal products, except machinery and equipment	7,5	-10,8	-10,8	-6,6
28 Manufacture of machinery and equipment n.e.c.	13,3	-2,5	-2,4	1,2
29 Manufacture of motor vehicles, trailers and semi-trailers	1,3	-24,1	-24,1	21,6
30 Manufacture of other transport equipment	1,3	-12,7	-12,7	0,3
31 Manufacture of furniture	1,1	-12,3	-12,3	-0,4
32 Other manufacturing	0,8	-31,6	-33,2	-11,1
33 Repair and installation of machinery and equipment	3,1	-10,5	-11,2	-4,7
D Electricity, gas, steam and air conditioning supply	10,2	-4,3	-1,1	-0,2
E Water supply; sewerage, waste management and remediation activities	3,1	-8,3	-8,9	-1,8
36 Water collection, treatment and supply	1,6	-9,1	-9,1	-2,7
Main industrial groupings:				
Raw materials and productive goods	42,5	-4,9	-4,2	-0,9
Investment goods	27,2	-8,7	-10,9	-1,0
Durable goods	1,5	-15,3	-17,6	-1,3
Other consumer goods	13,1	-5,3	-5,3	-1,7
Special indices:				
10-11 Food industry	7,5	-6,8	-8,9	-3,6
13-15 Textile, clothing and leather industry	1,3	-17,6	-20,2	-2,6
16-17 Forest industry	13,1	-1,8	-2,2	-1,6
19-22 Chemical industry	13,1	-7,4	-7,4	-2,7
24-30 Metal industry	37,7	-7,8	-8,5	0,4
26-27 Electrical and electronics industry	10,2	-16,8	-18,7	-1,7
25,28-30,33 Machinery and metal product industry	26,4	-7,6	-8,0	-0,6
29-30 Manufacture of transport equipment	2,6	-18,7	-20,9	5,4

Appendix figures

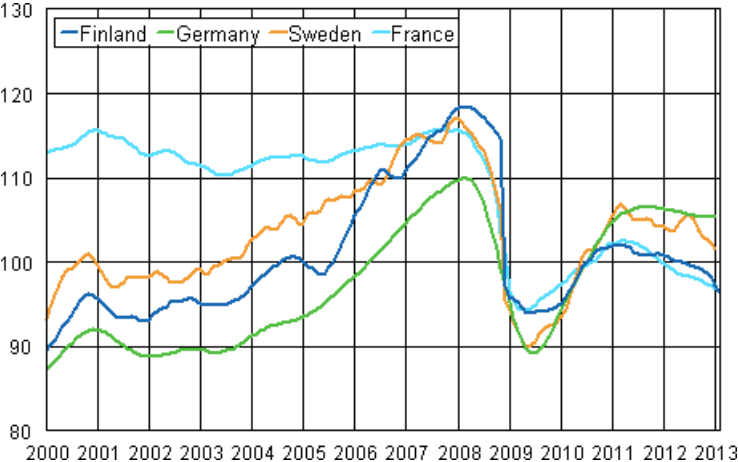
Appendix figure 1. Working day adjusted change percentage of industrial output February 2012 /February 2013, TOL 2008



Appendix figure 2. Seasonally adjusted change percentage of industrial output January 2013 /February 2013, TOL 2008



Appendix figure 3. Trend of industrial output Finland, Germany, Sweden and France (BCD) 2000 - 2013, 2010=100, TOL 2008



Revisions in these statistics

The data of the statistics have become revised according to the table below. For more information about data revisions, see Section 3 of the quality description (only in Finnish).

Revisions to data on annual changes in main industries

Main industries and Statistical reference month		Annual change (%)		Revision (%-point)
		1st release (%)	Latest release (10.04.2013) (%)	
BCDE Total industry	2012 / 09	-5,4	-6,6	-1,2
	2012 / 10	3,4	5,1	1,7
	2012 / 11	-2,1	-1,3	0,8
	2012 / 12	-6,9	-5,8	1,1
	2013 / 01	-3,5	-2,5	1,0
C Manufacturing	2012 / 09	-6,7	-7,7	-1,0
	2012 / 10	3,2	5,4	2,2
	2012 / 11	-2,5	-1,9	0,6
	2012 / 12	-9,9	-9,3	0,6
	2013 / 01	-5,0	-3,7	1,3
D Electricity, gas, steam and air conditioning supply	2012 / 09	7,6	7,6	0,0
	2012 / 10	6,8	6,8	0,0
	2012 / 11	0,9	0,9	0,0
	2012 / 12	14,2	14,2	0,0
	2013 / 01	5,3	5,3	0,0
10-11 Food industry	2012 / 09	-7,6	-8,2	-0,6
	2012 / 10	3,6	3,9	0,3
	2012 / 11	-3,7	-3,3	0,4
	2012 / 12	-12,0	-12,7	-0,7
	2013 / 01	-1,5	2,6	4,1
16-17 Forest industry	2012 / 09	-2,1	-3,8	-1,7
	2012 / 10	4,4	5,4	1,0
	2012 / 11	3,6	3,4	-0,2
	2012 / 12	-2,5	-2,8	-0,3
	2013 / 01	3,4	4,3	0,9
19-22 Chemical industry	2012 / 09	-15,3	-17,8	-2,5
	2012 / 10	8,0	8,2	0,2
	2012 / 11	11,4	10,9	-0,5
	2012 / 12	7,3	6,6	-0,7
	2013 / 01	-3,9	-1,5	2,4
24-30, 33 Metal industry	2012 / 09	-3,9	-3,7	0,2
	2012 / 10	1,4	4,4	3,0
	2012 / 11	-7,5	-5,4	2,1
	2012 / 12	-14,2	-13,0	1,2
	2013 / 01	-9,2	-8,5	0,7
26-27 Electrical and electronics industry	2012 / 09	-14,4	-10,3	4,1
	2012 / 10	-6,1	-0,6	5,5
	2012 / 11	-21,1	-13,6	7,5
	2012 / 12	-17,6	-15,9	1,7
	2013 / 01	-12,4	-13,3	-0,9

Main industries and Statistical reference month		Annual change (%)		Revision (%-point)
		1st release (%)	Latest release (10.04.2013) (%)	
Manufacturing excl. electrical and electronics industry	2012 / 09	-5,3	-7,3	-2,0
	2012 / 10	5,0	6,2	1,2
	2012 / 11	1,3	-0,2	-1,5
	2012 / 12	-7,9	-8,1	-0,2
	2013 / 01	-4,0	-2,4	1,6

Inquiries

Kari Rautio 09 1734 2479

Salla Simola 09 1734 3308

Director in charge:

Hannele Orjala

volyymi.indeksi@stat.fi

www.stat.fi

Source: Volume Index of Industrial Output 2013, February. Statistics Finland