

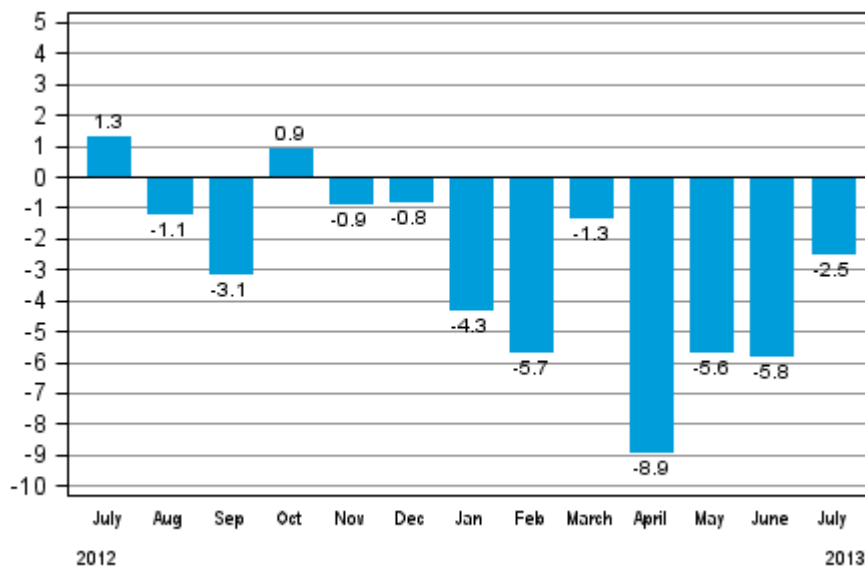
Volume index of industrial output

2013, July

Industrial output decreased by 2.5 per cent year-on-year in July

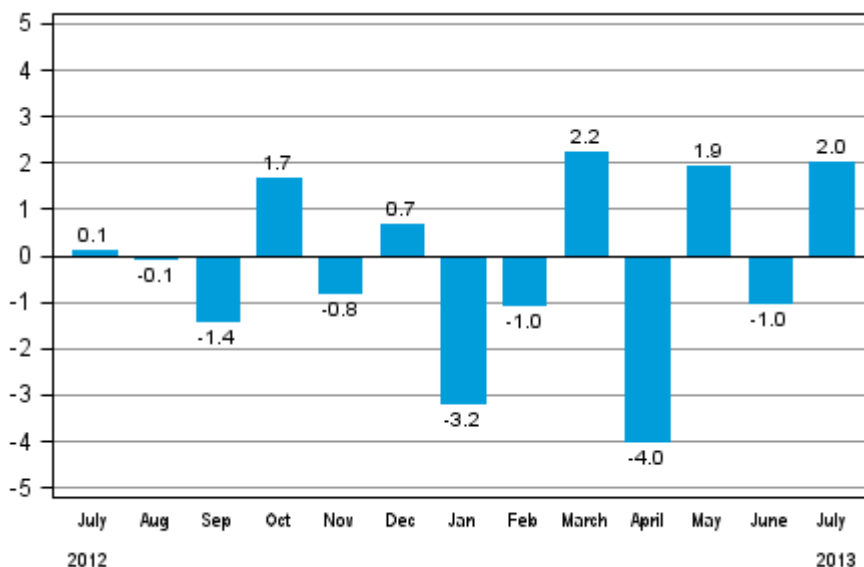
According to Statistics Finland, output of total industries adjusted for working days was 2.5 per cent lower in July 2013 than twelve months earlier. In the January to July period, industrial output adjusted for working days went down by 4.8 per cent from twelve months back. Capacity utilisation rate was in July nearly two percentage points higher than one year previously.

Working day adjusted change in industrial output (BCDE) from corresponding month previous year, %, TOL 2008



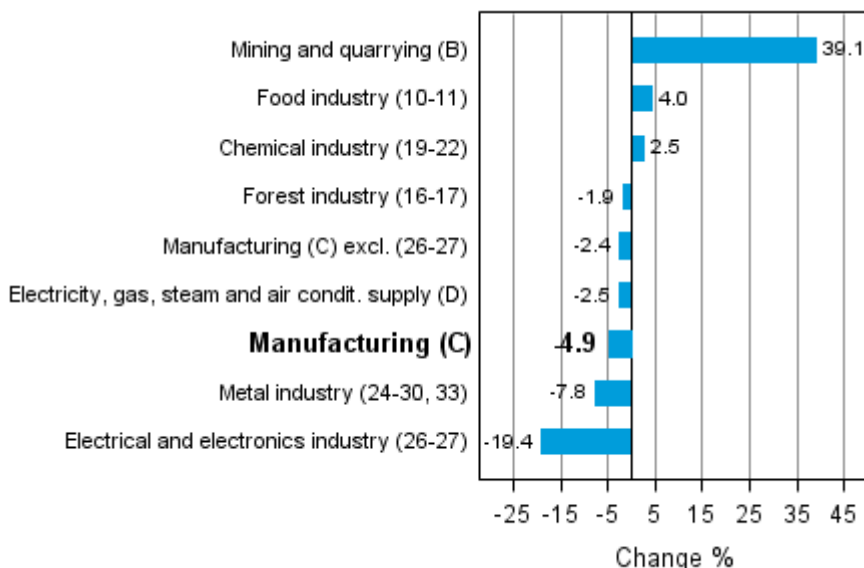
Seasonally adjusted output grew in July by 2.0 per cent compared with the previous month. In June, seasonally adjusted output was one per cent lower than in May. In May, output increased by 1.9 per cent from the previous month.

Seasonally adjusted change in industrial output (BCDE) from previous month, %, TOL 2008



Industrial output diminished in several main industries in July. Output fell most in the electrical and electronics industry, by 19.4 per cent. Output in the metal industry went down by 7.8 per cent. Among main industries, output increased most in mining and quarrying, which grew by 39.1 per cent compared with the year before. In the food industry, output grew by 4.0 per cent year-on-year. In the chemical industry, output increased by 2.5 per cent from July 2012.

Working day adjusted change in industrial output by industry 7/2012-7/2013, %, TOL 2008



Capacity utilisation rate in manufacturing (C) was 75.8 per cent in July, or 1.6 percentage points higher than one year earlier. In the forest industry, capacity utilisation rate was 80.6 per cent in July, or 0.3 percentage points higher than in July 2012. In the metal industry, capacity utilisation rate was 75.2 per cent in July, which was 0.5 percentage points higher than one year earlier.

Revised data for July 2013 will be published at 9 am on 10 October 2013 in connection with the release of industrial output data for August 2013. The revision is influenced by the estimation used in the latest release which concerns the periodic tax return data used for enterprises with fewer than 50 employees. Because of the method used, seasonally adjusted figures for previous months may change even if the original figures do not become revised. The seasonally adjusted figures will also be adjusted for working days.

Contents

Industrial output decreased by 2.5 per cent year-on-year in July	5
--	---

Tables

Table 1. Volume index of industrial output, value added, original, working day adjusted, seasonally adjusted change percentage.....	6
---	---

Figures

Appendix figures

Appendix figure 1. Working day adjusted change percentage of industrial output July 2012 /July 2013, TOL 2008.	7
Appendix figure 2. Seasonally adjusted change percentage of industrial output June 2013 /July 2013, TOL 2008...	7
Appendix figure 3. Trend of industrial output Finland, Germany, Sweden and France (BCD) 2000 - 2013, 2010=100, TOL 2008.....	8

Revisions in these statistics.....	9
------------------------------------	---

Industrial output decreased by 2.5 per cent year-on-year in July

According to Statistics Finland, output of total industries adjusted for working days was 2.5 per cent lower in July 2013 than twelve months earlier. Seasonally adjusted output grew by 2.0 per cent in July from June.

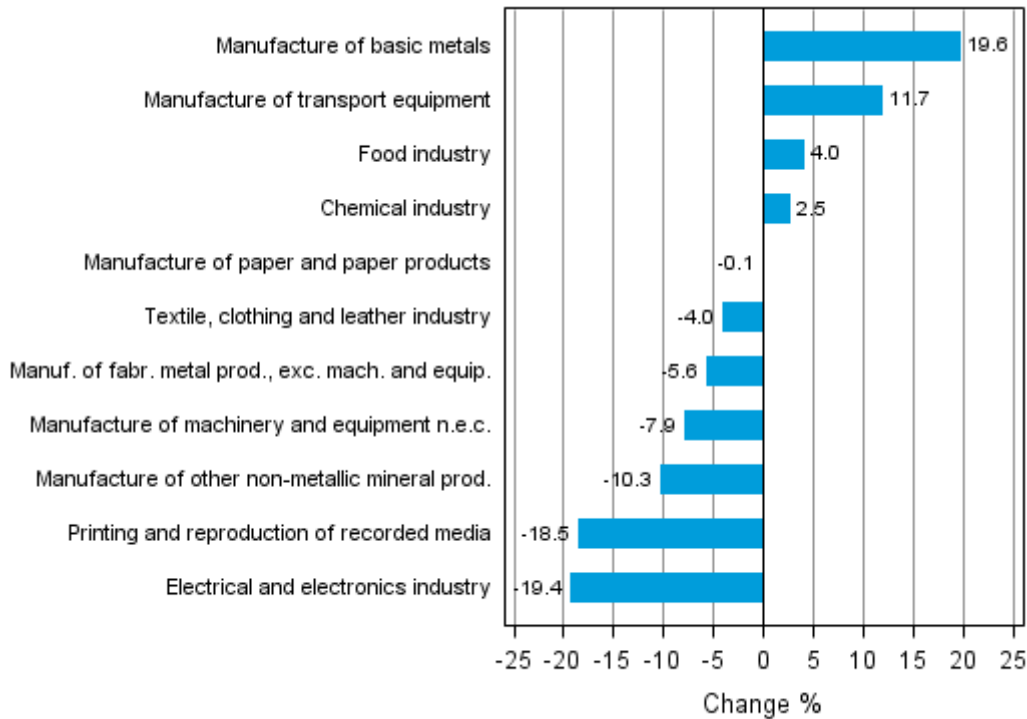
Adjusted for working days, industrial output (C) went down by 4.9 per cent in July from one year back. Seasonally adjusted output grew in July by 0.6 per cent compared with the previous month.

Table 1. Volume index of industrial output, value added, original, working day adjusted, seasonally adjusted change percentage

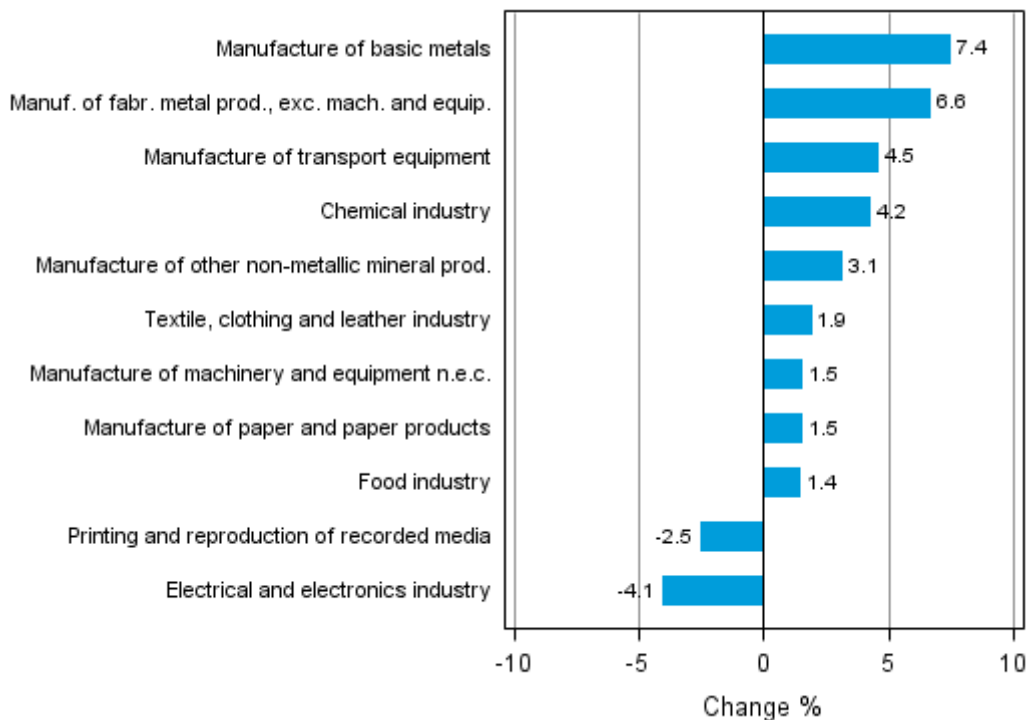
	Value added share	Original change percentage, 2013 JUL / 2012 JUL	Working day adj. change percentage, 2013 JUL / 2012 JUL	Seasonal adj. change percentage, 2013 JUL / 2013 JUN
Industry (Tol 2008)				
Total industries	100,0	-0,6	-2,5	2,0
B Mining and quarrying	3,8	35,3	39,1	32,6
C Manufacturing	82,9	-2,7	-4,9	0,6
10 Manufacture of food products	6,2	7,2	3,4	1,9
11 Manufacture of beverages	1,3	7,8	5,7	-2,4
13 Manufacture of textiles	0,6	11,3	6,2	3,2
14 Manufacture of wearing apparel	0,4	-6,4	-6,4	5,5
15 Manufacture of leather and related products	0,3	-2,5	-2,5	0,5
16 Manufacture of wood and of products of wood and cork, except furniture; manufacture of articles of straw and plaiting materials	3,6	-5,4	-11,6	-0,2
17 Manufacture of paper and paper products	9,5	-0,1	-0,1	1,5
18 Printing and reproduction of recorded media	1,7	-18,1	-18,5	-2,5
23 Manufacture of other non-metallic mineral products	3,6	-6,6	-10,3	3,1
24 Manufacture of basic metals	4,2	19,9	19,6	7,4
25 Manufacture of fabricated metal products, except machinery and equipment	7,5	-5,6	-5,6	6,6
28 Manufacture of machinery and equipment n.e.c.	13,3	-5,6	-7,9	1,5
29 Manufacture of motor vehicles, trailers and semi-trailers	1,3	-26,5	-26,5	-6,2
30 Manufacture of other transport equipment	1,3	54,9	54,9	5,1
31 Manufacture of furniture	1,1	-14,7	-14,7	1,7
32 Other manufacturing	0,8	-24,7	-27,0	-5,0
33 Repair and installation of machinery and equipment	3,1	-10,5	-11,6	0,8
D Electricity, gas, steam and air conditioning supply	10,2	-2,4	-2,5	8,3
E Water supply; sewerage, waste management and remediation activities	3,1	0,1	-0,8	-0,9
36 Water collection, treatment and supply	1,6	0,7	0,7	-1,8
Main industrial groupings:				
Raw materials and productive goods	42,5	2,8	1,5	4,1
Investment goods	27,2	-8,5	-10,0	-0,7
Durable goods	1,5	-16,6	-21,3	-1,6
Other consumer goods	13,1	4,0	4,0	4,3
Special indices:				
10-11 Food industry	7,5	7,3	4,0	1,4
13-15 Textile, clothing and leather industry	1,3	2,8	-4,0	1,9
16-17 Forest industry	13,1	-1,3	-1,9	1,6
19-22 Chemical industry	13,1	2,5	2,5	4,2
24-30 Metal industry	37,7	-5,0	-7,4	0,1
26-27 Electrical and electronics industry	10,2	-17,0	-19,4	-4,1
25,28-30,33 Machinery and metal product industry	26,4	-4,5	-6,6	1,3
29-30 Manufacture of transport equipment	2,6	15,8	11,7	4,5

Appendix figures

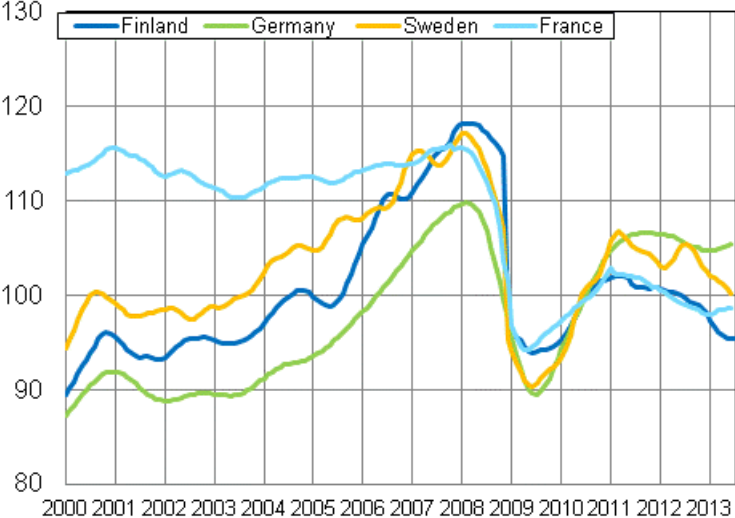
Appendix figure 1. Working day adjusted change percentage of industrial output July 2012 /July 2013, TOL 2008



Appendix figure 2. Seasonally adjusted change percentage of industrial output June 2013 /July 2013, TOL 2008



Appendix figure 3. Trend of industrial output Finland, Germany, Sweden and France (BCD) 2000 - 2013, 2010=100, TOL 2008



Revisions in these statistics

The data of the original series of industrial output have become revised according to the table below. For more information about data revisions, see Section 3 of the quality description (only in Finnish).

Revisions to data on annual changes in main industries

Main industries and Statistical reference month		Annual change (%)		Revision (%-point)
		1st release (%)	Latest release (10.09.2013) (%)	
BCDE Total industry	2013 / 02	-6,1	-5,8	0,3
	2013 / 03	-7,4	-7,8	-0,4
	2013 / 04	-3,5	-2,3	1,2
	2013 / 05	-5,3	-5,1	0,2
	2013 / 06	-7,8	-7,9	-0,1
C Manufacturing	2013 / 02	-7,5	-7,1	0,4
	2013 / 03	-11,1	-11,5	-0,4
	2013 / 04	-6,2	-4,7	1,5
	2013 / 05	-8,5	-8,3	0,2
	2013 / 06	-8,2	-8,3	-0,1
D Electricity, gas, steam and air conditioning supply	2013 / 02	-4,3	-4,3	0,0
	2013 / 03	15,6	15,6	0,0
	2013 / 04	16,8	16,8	0,0
	2013 / 05	7,2	6,7	-0,5
	2013 / 06	-10,8	-10,8	0,0
10-11 Food industry	2013 / 02	-6,8	-6,3	0,5
	2013 / 03	-7,6	-7,5	0,1
	2013 / 04	-2,3	-0,6	1,7
	2013 / 05	1,9	2,1	0,2
	2013 / 06	-1,9	-2,0	-0,1
16-17 Forest industry	2013 / 02	-1,8	-1,4	0,4
	2013 / 03	-7,5	-6,6	0,9
	2013 / 04	-0,7	-0,2	0,5
	2013 / 05	-1,1	-0,6	0,5
	2013 / 06	-4,7	-4,9	-0,2
19-22 Chemical industry	2013 / 02	-7,4	-7,0	0,4
	2013 / 03	-12,2	-11,9	0,3
	2013 / 04	-6,5	-5,8	0,7
	2013 / 05	-2,9	-2,9	0,0
	2013 / 06	-3,3	-4,1	-0,8
24-30, 33 Metal industry	2013 / 02	-8,0	-7,2	0,8
	2013 / 03	-12,1	-12,9	-0,8
	2013 / 04	-9,0	-7,0	2,0
	2013 / 05	-14,1	-13,9	0,2
	2013 / 06	-10,9	-10,9	0,0
26-27 Electrical and electronics industry	2013 / 02	-16,8	-16,3	0,5
	2013 / 03	-15,7	-15,5	0,2
	2013 / 04	-12,9	-13,0	-0,1
	2013 / 05	-20,6	-20,8	-0,2
	2013 / 06	-12,9	-13,2	-0,3

Main industries and Statistical reference month		Annual change (%)		Revision (%-point)
		1st release (%)	Latest release (10.09.2013) (%)	
Manufacturing excl. electrical and electronics industry	2013 / 02	-6,2	-5,8	0,4
	2013 / 03	-10,4	-11,0	-0,6
	2013 / 04	-5,3	-3,6	1,7
	2013 / 05	-6,9	-6,6	0,3
	2013 / 06	-7,5	-7,6	-0,1

Inquiries

Kari Rautio 09 1734 2479

Salla Simola 09 1734 3308

Director in charge:

Hannele Orjala

volyymi.indeksi@stat.fi

www.stat.fi

Source: Volume Index of Industrial Output 2013, July. Statistics Finland