

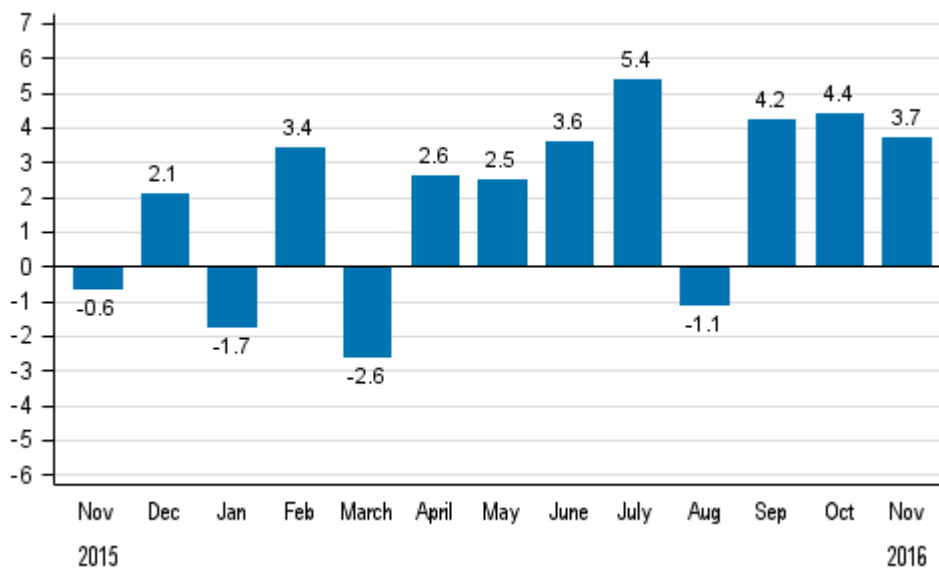
# Volume index of industrial output

2016, November

## Industrial output went up by 3.7 per cent year-on-year in November

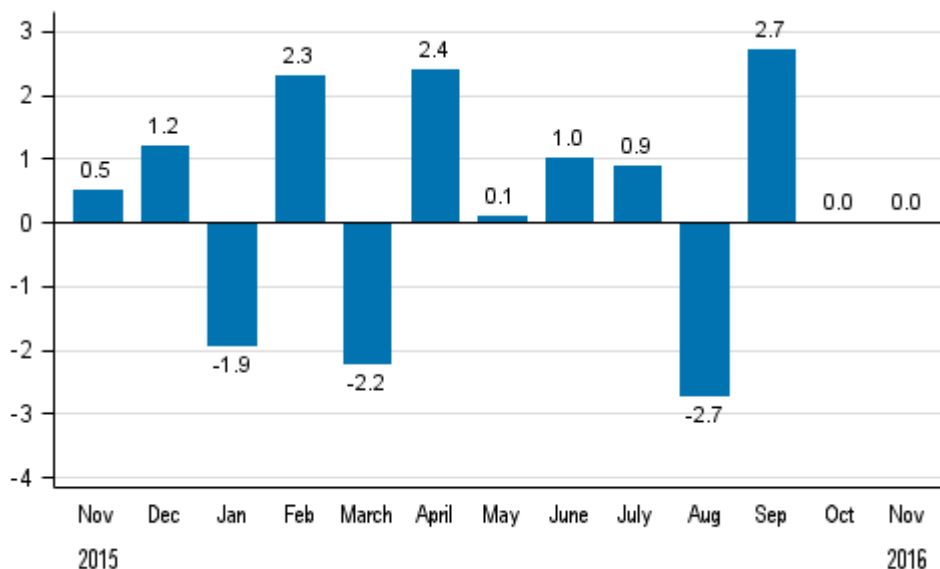
According to Statistics Finland, output of total industries adjusted for working days was 3.7 per cent higher in November 2016 than in November 2015. In the January to November period, industrial output adjusted for working days went up by 2.3 per cent from one year ago.

**Working day adjusted change in total industrial output (BCDE) from corresponding month previous year, %, TOL 2008**



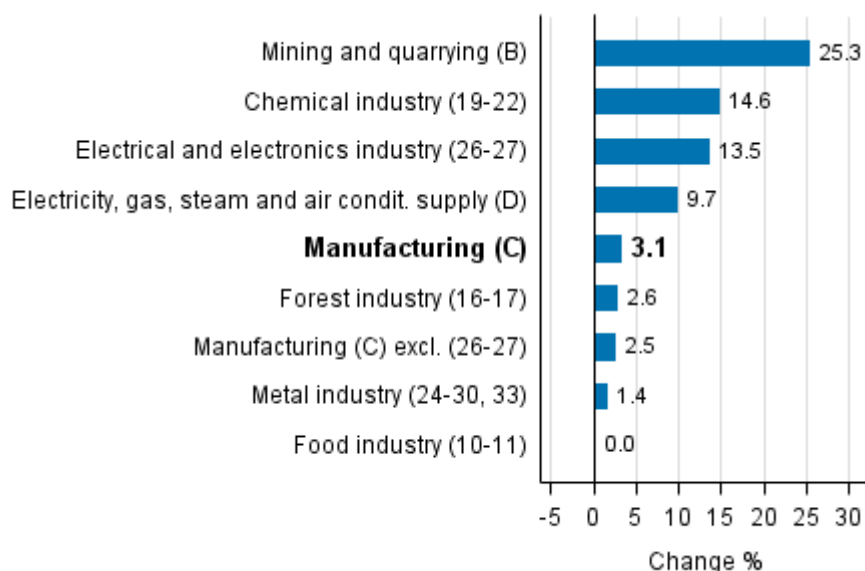
Seasonally adjusted output was in November and October on level with the previous months. In September, seasonally adjusted output grew by 2.7 per cent compared with August.

**Seasonally adjusted change in total industrial output (BCDE) from previous month, %, TOL 2008**



Output grew in all main industries. Output increased most, by 25.3 per cent, in mining and quarrying. In the chemical industry, output grew by 14.6 per cent in November. Output in the electrical and electronics industry increased by 13.5 per cent. In the forest industry, output grew by 2.6 per cent. In November, output in the metal industry was 1.4 per cent up on twelve months back.

**Working day adjusted change in industrial output by industry 11/2015-11/2016, %, TOL 2008**



In November, capacity utilisation rate in manufacturing (C) was 83.2 per cent, or 1.9 percentage points higher than one year earlier. In the forest industry, capacity utilisation rate was 90.3 per cent in November, or 0.4 percentage points higher than in November 2015. In the metal industry, capacity utilisation rate was 84.4 per cent in November, which was 1.8 percentage points higher than one year earlier.

Revised data for November 2016 will be published at 9 am on 10 February 2017 in connection with the release of industrial output data for December 2016. The revision is influenced by the estimation used in the latest release, which concerns the periodic tax return data used for enterprises with fewer than 50 employees. Because of the method used, seasonally adjusted figures for previous months may change even if the original figures do not become revised. The seasonally adjusted figures will also be adjusted for working days.

# Contents

Industrial output grew by 3.7 per cent year-on-year in November.....	5
--	---

## Tables

Table 1. Volume index of industrial output, value added, original, working day adjusted, seasonally adjusted change percentage.....	6
---	---

## Figures

### Appendix figures

Appendix figure 1. Working day adjusted change percentage of industrial output November 2015 /November 2016, TOL 2008.....	7
--	---

Appendix figure 2. Seasonally adjusted change percentage of industrial output October 2016 /November 2016, TOL 2008.....	7
--	---

Appendix figure 3. Seasonally adjusted industrial output Finland, Germany, Sweden, France and United Kingdom (BCD) 2005 - 2016, 2010=100, TOL 2008.....	8
---	---

Revisions in these statistics.....	9
------------------------------------	---

## Industrial output grew by 3.7 per cent year-on-year in November

According to Statistics Finland, output of total industries adjusted for working days was 3.7 per cent higher in November 2016 than in November 2015. Seasonally adjusted output was in November at the same level as in October.

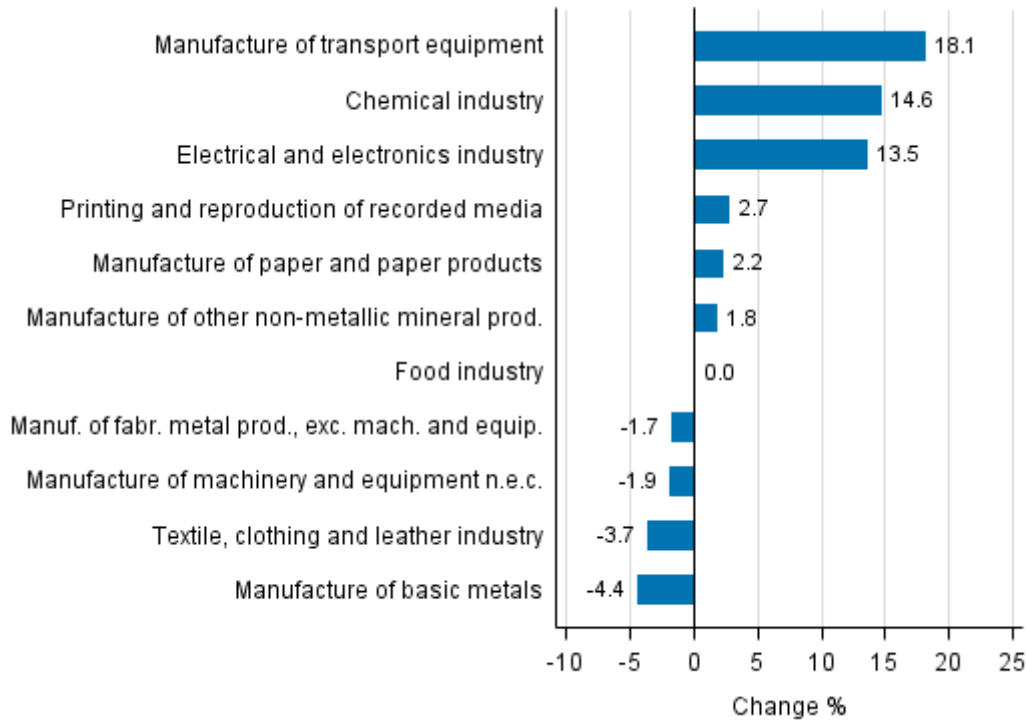
Adjusted for working days, industrial output (C) grew by 3.1 per cent from one year back in November. Seasonally adjusted output declined by 0.5 per cent in November from the month before.

**Table 1. Volume index of industrial output, value added, original, working day adjusted, seasonally adjusted change percentage**

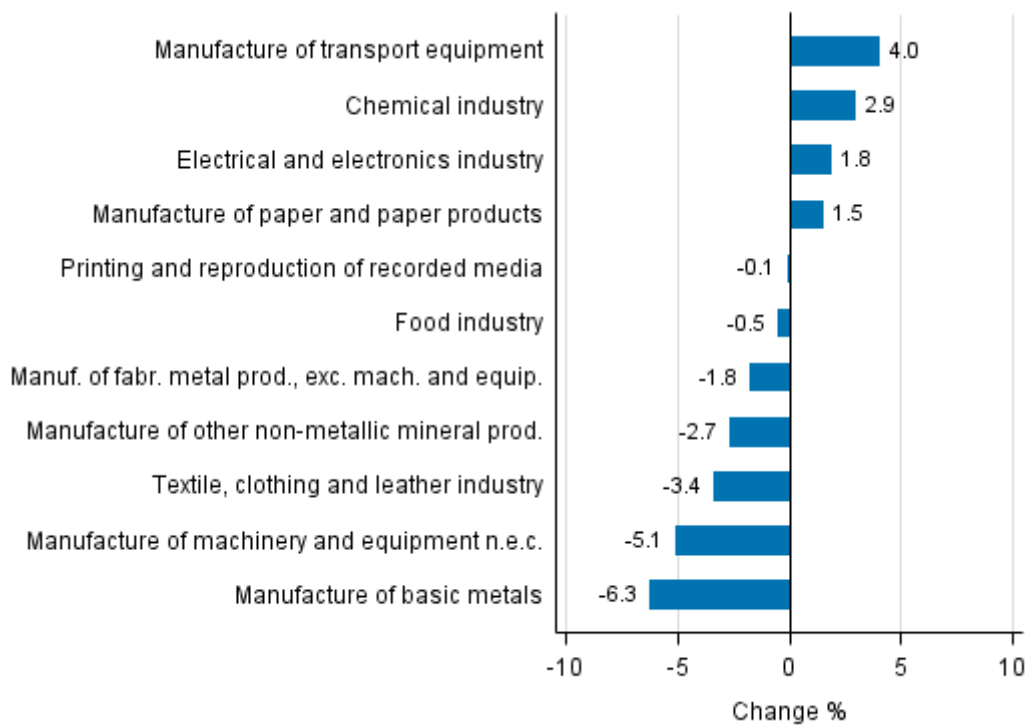
	Value added share	Original change percentage, 2016 NOV / 2015 NOV	Working day adj. change percentage, 2016 NOV / 2015 NOV	Seasonal adj. change percentage, 2016 NOV / 2016 OCT
Industry (Tot 2008)				
Total industries	100,0	7,1	3,7	-0,0
B Mining and quarrying	1,0	25,3	25,3	5,0
C Manufacturing	85,3	6,8	3,1	-0,5
10 Manufacture of food products	7,3	3,1	-0,9	-0,6
11 Manufacture of beverages	1,2	10,9	5,1	-0,2
13 Manufacture of textiles	0,6	-1,6	-4,5	-3,2
14 Manufacture of wearing apparel	0,5	-7,7	-11,2	-0,1
15 Manufacture of leather and related products	0,3	25,8	25,8	15,1
16 Manufacture of wood and of products of wood and cork, except furniture; manufacture of articles of straw and plaiting materials	4,3	6,8	2,4	-0,8
17 Manufacture of paper and paper products	9,1	2,2	2,2	1,5
18 Printing and reproduction of recorded media	1,6	5,1	2,7	-0,1
23 Manufacture of other non-metallic mineral products	3,2	5,6	1,8	-2,7
24 Manufacture of basic metals	5,0	-2,5	-4,4	-6,3
25 Manufacture of fabricated metal products, except machinery and equipment	7,4	1,6	-1,7	-1,8
28 Manufacture of machinery and equipment n.e.c.	11,4	2,3	-1,9	-5,1
31 Manufacture of furniture	0,9	9,4	4,7	-2,1
32 Other manufacturing	0,8	16,6	16,6	7,1
33 Repair and installation of machinery and equipment	4,7	-2,0	-4,1	1,0
D Electricity, gas, steam and air conditioning supply	10,8	9,7	9,7	6,8
E Water supply; sewerage, waste management and remediation activities	2,9	-10,5	-10,5	-18,6
36 Water collection, treatment and supply	0,4	3,9	3,9	-2,2
Main industrial groupings:				
Raw materials and productive goods	41,6	4,4	2,5	0,3
Investment goods	27,6	5,9	2,9	-0,1
Durable goods	1,3	7,5	1,8	-1,3
Other consumer goods	14,8	16,4	11,4	0,2
Special indices:				
10-11 Food industry	8,5	4,1	-0,0	-0,5
13-15 Textile, clothing and leather industry	1,3	1,3	-3,7	-3,4
16-17 Forest industry	13,5	3,7	2,6	1,3
19-22 Chemical industry	13,1	14,6	14,6	2,9
24-30 Metal industry	37,6	7,0	2,2	-1,0
26-27 Electrical and electronics industry	11,1	17,2	13,5	1,8
25,28-30,33 Machinery and metal product industry	26,2	3,0	-1,4	-2,0
29-30 Manufacture of transport equipment	2,6	18,1	18,1	4,0

# Appendix figures

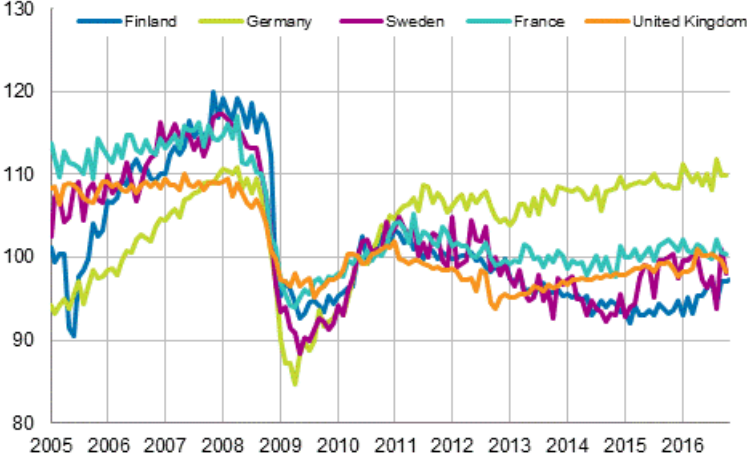
**Appendix figure 1. Working day adjusted change percentage of industrial output November 2015 /November 2016, TOL 2008**



**Appendix figure 2. Seasonally adjusted change percentage of industrial output October 2016 /November 2016, TOL 2008**



**Appendix figure 3. Seasonally adjusted industrial output Finland, Germany, Sweden, France and United Kingdom (BCD) 2005 - 2016, 2010=100, TOL 2008**





## Revisions in these statistics

The data of the original series of industrial output have become revised according to the table below. For more information about data revisions, see Section 3 of the quality description (only in Finnish).

### Revisions to data on annual changes in main industries

Main industries and Statistical reference month		Annual change (%)		Revision (%-point)
		1st release (%)	Latest release (10.01.2017) (%)	
BCDE Total industry	2016 / 06	4,6	3,9	-0,7
	2016 / 07	1,9	0,8	-1,1
	2016 / 08	1,9	3,6	1,7
	2016 / 09	3,3	4,0	0,7
	2016 / 10	0,4	1,3	0,9
C Manufacturing	2016 / 06	4,5	3,7	-0,8
	2016 / 07	1,8	0,5	-1,3
	2016 / 08	3,5	5,5	2,0
	2016 / 09	4,9	5,6	0,7
	2016 / 10	0,8	1,9	1,1
D Electricity, gas, steam and air conditioning supply	2016 / 06	-11,7	-11,7	0,0
	2016 / 07	-6,2	-6,2	0,0
	2016 / 08	0,9	0,9	0,0
	2016 / 09	-5,2	-5,2	0,0
	2016 / 10	-4,3	-4,3	0,0
10-11 Food industry	2016 / 06	5,8	7,0	1,2
	2016 / 07	-3,2	-3,3	-0,1
	2016 / 08	3,7	4,2	0,5
	2016 / 09	-0,4	-0,4	0,0
	2016 / 10	-3,0	-3,2	-0,2
16-17 Forest industry	2016 / 06	-1,6	-1,8	-0,2
	2016 / 07	-1,8	-2,2	-0,4
	2016 / 08	0,4	2,4	2,0
	2016 / 09	1,2	1,3	0,1
	2016 / 10	2,4	2,1	-0,3
19-22 Chemical industry	2016 / 06	0,4	1,0	0,6
	2016 / 07	4,8	2,8	-2,0
	2016 / 08	-0,8	-1,5	-0,7
	2016 / 09	8,8	9,6	0,8
	2016 / 10	9,5	7,0	-2,5
24-30, 33 Metal industry	2016 / 06	7,8	6,3	-1,5
	2016 / 07	3,7	2,9	-0,8
	2016 / 08	5,7	8,5	2,8
	2016 / 09	6,0	7,3	1,3
	2016 / 10	-1,5	1,3	2,8
26-27 Electrical and electronics industry	2016 / 06	-2,4	-2,8	-0,4
	2016 / 07	3,6	2,9	-0,7
	2016 / 08	15,5	16,8	1,3
	2016 / 09	3,9	4,4	0,5
	2016 / 10	4,6	4,6	0,0

Main industries and Statistical reference month		Annual change (%)		Revision (%-point)
		1st release (%)	Latest release (10.01.2017) (%)	
Manufacturing excl. electrical and electronics industry	2016 / 06	5,6	4,7	-0,9
	2016 / 07	1,5	0,2	-1,3
	2016 / 08	1,9	4,0	2,1
	2016 / 09	5,0	5,8	0,8
	2016 / 10	0,3	1,5	1,2

## Inquiries

Kari Rautio                   029 551 2479  
Heidi Myllylä               029 551 3792  
Director in charge:  
Mari Ylä-Jarkko

[volyymi.indeksi@stat.fi](mailto:volyymi.indeksi@stat.fi)  
[www.stat.fi](http://www.stat.fi)

Source: Volume Index of Industrial Output 2016, November. Statistics Finland