

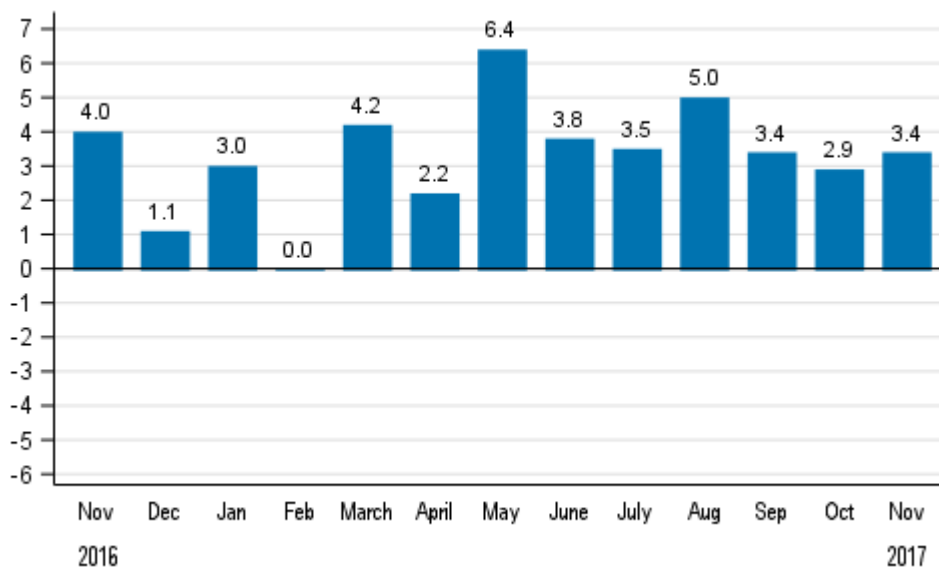
Volume index of industrial output

2017, November

Industrial output grew by 3.4 per cent year-on-year in November

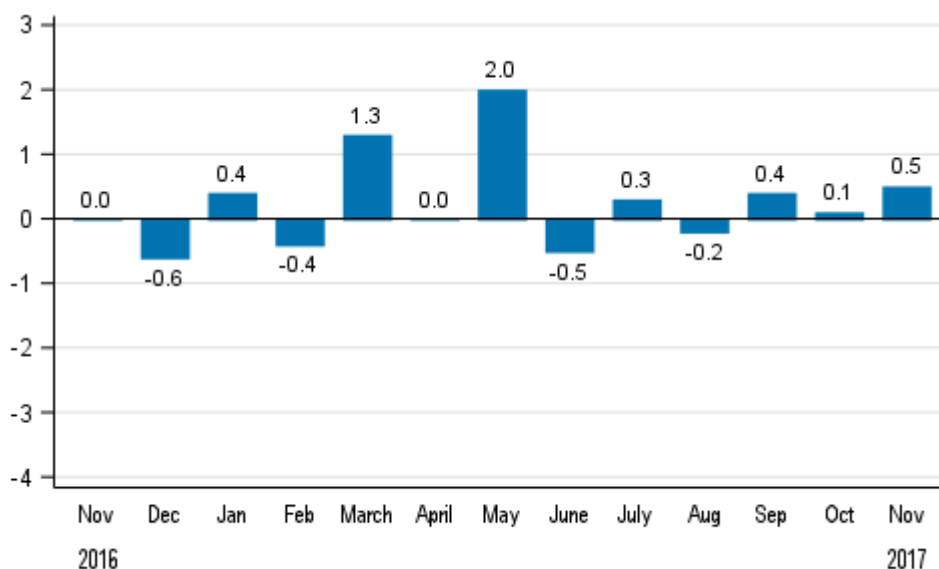
According to Statistics Finland, output of total industries adjusted for working days was 3.4 per cent higher in November 2017 than in November 2016. Adjusted for working days, industrial output went up by 3.5 per cent in January to November from one year back.

Working day adjusted change in total industrial output (BCDE) from corresponding month previous year, %, TOL 2008



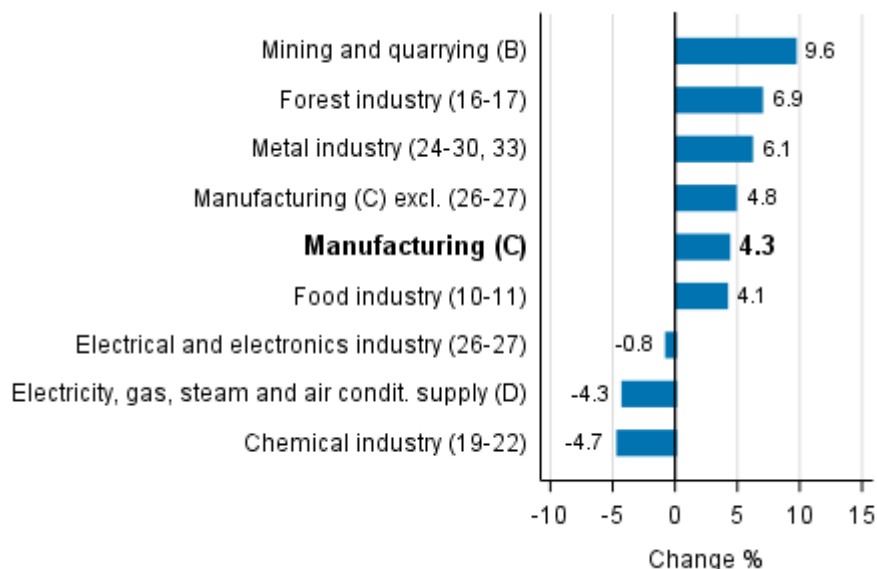
Seasonally adjusted output went up by 0.5 per cent in November from the month before. In October, seasonally adjusted output grew by 0.1 per cent from September. In September, seasonally adjusted output grew by 0.4 per cent from August.

Seasonally adjusted change in total industrial output (BCDE) from previous month, %, TOL 2008



In November, output grew in several main industries. Output increased most in mining and quarrying by 9.6 per cent. In the forest industry, output went up by 6.9 per cent. Output in the metal industry went up by 6.1 per cent from one year ago and in the food industry by 4.1 per cent year-on-year. Output declined most, by 4.7 per cent, in the chemical industry.

Working day adjusted change in industrial output by industry 11/2016-11/2017, %, TOL 2008



In November, capacity utilisation rate in manufacturing (C) was 83.7 per cent, or 0.6 percentage points higher than one year earlier. Capacity utilisation rate in the forest industry was 90.3 per cent in November, which was 0.7 percentage points lower than one year before. In the metal industry, capacity utilisation rate was 84.0 percentage points in November, which was 0.7 per cent higher than one year earlier.

Revised data for November 2017 will be published at 9 am on 9 February 2018 in connection with the release of industrial output data for December 2017. The revision is influenced by the estimation used in the latest release, which concerns the periodic tax return data used for enterprises with fewer than 50 employees. Because of the method used, seasonally adjusted figures for previous months may change even if the original figures do not become revised. The seasonally adjusted figures will also be adjusted for working days.

The base year 2015=100 will be utilised for the calculation of the Volume Index of Industrial Output starting from the statistics for January 2018. Data calculated with the new base year will be released for the first time on 9 March 2018.

Contents

Industrial output grew by 3.4 per cent year-on year in November.....	5
----------------------------------------------------------------------	---

Tables

Table 1. Volume index of industrial output, value added, original, working day adjusted, seasonally adjusted change percentage.....	6
-------------------------------------------------------------------------------------------------------------------------------------	---

Figures

Appendix figures

Appendix figure 1. Working day adjusted change percentage of industrial output November 2016 /November 2017, TOL 2008.....	7
----------------------------------------------------------------------------------------------------------------------------	---

Appendix figure 2. Seasonally adjusted change percentage of industrial output October 2017 /November 2017, TOL 2008.....	7
--------------------------------------------------------------------------------------------------------------------------	---

Appendix figure 3. Seasonally adjusted industrial output Finland, Germany, Sweden, France and United Kingdom (BCD) 2005 - 2017, 2010=100, TOL 2008.....	8
---------------------------------------------------------------------------------------------------------------------------------------------------------	---

Revisions in these statistics.....	9
------------------------------------	---

Industrial output grew by 3.4 per cent year-on year in November

According to Statistics Finland, output of total industries adjusted for working days was 3.4 per cent higher in November 2017 than in November 2016. Seasonally adjusted output grew by 0.5 per cent in November from October.

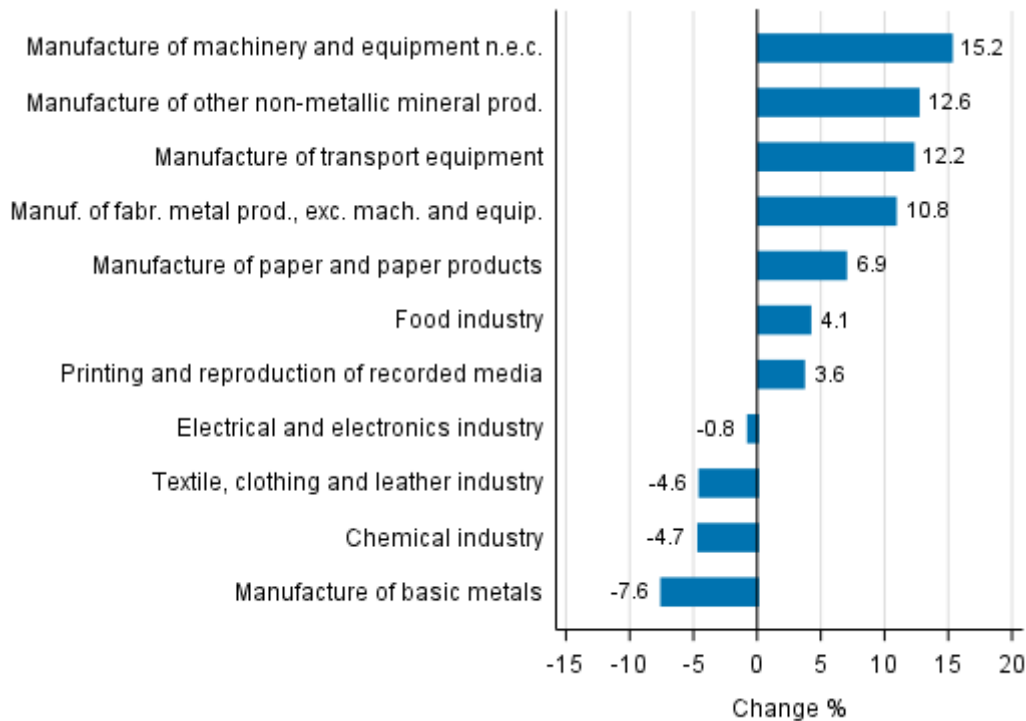
Adjusted for working days, industrial output (C) went up by 4.3 per cent in November from one year back. Seasonally adjusted output grew by 0.5 per cent in November from October.

Table 1. Volume index of industrial output, value added, original, working day adjusted, seasonally adjusted change percentage

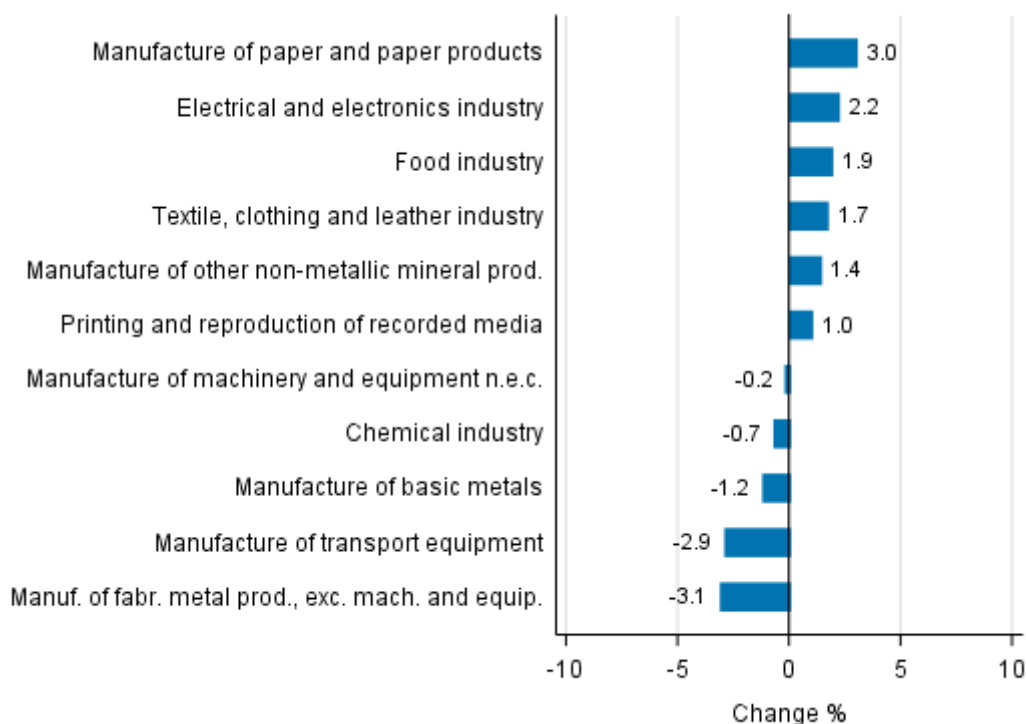
	Value added share	Original change percentage, 2017 NOV / 2016 NOV	Working day adj. change percentage, 2017 NOV / 2016 NOV	Seasonal adj. change percentage, 2017 NOV / 2017 OCT
Industry (Tol 2008)				
Total industries	100,0	3,2	3,4	0,5
B Mining and quarrying	1,5	9,6	9,6	5,6
C Manufacturing	84,3	3,9	4,3	0,5
10 Manufacture of food products	6,9	2,3	2,5	1,1
11 Manufacture of beverages	1,1	14,0	15,4	7,5
13 Manufacture of textiles	0,6	7,7	6,7	1,8
14 Manufacture of wearing apparel	0,4	-25,0	-24,0	-1,7
15 Manufacture of leather and related products	0,2	3,6	3,6	11,5
16 Manufacture of wood and of products of wood and cork, except furniture; manufacture of articles of straw and plaiting materials	3,6	6,6	6,7	1,5
17 Manufacture of paper and paper products	9,8	6,9	6,9	3,0
18 Printing and reproduction of recorded media	1,5	2,6	3,6	1,0
23 Manufacture of other non-metallic mineral products	2,9	12,3	12,6	1,4
24 Manufacture of basic metals	4,2	-9,1	-7,6	-1,2
25 Manufacture of fabricated metal products, except machinery and equipment	7,7	12,4	10,8	-3,1
28 Manufacture of machinery and equipment n.e.c.	10,9	14,1	15,2	-0,2
31 Manufacture of furniture	1,0	3,7	3,4	3,6
32 Other manufacturing	0,7	2,5	2,5	3,4
33 Repair and installation of machinery and equipment	3,9	0,7	0,7	1,0
D Electricity, gas, steam and air conditioning supply	10,7	-4,3	-4,3	2,2
E Water supply; sewerage, waste management and remediation activities	3,5	8,2	8,2	-2,5
36 Water collection, treatment and supply	1,1	-1,9	-1,9	-1,4
Main industrial groupings:				
Raw materials and productive goods	40,7	4,2	3,6	0,7
Investment goods	28,1	8,4	8,4	0,8
Durable goods	1,3	3,3	3,7	3,6
Other consumer goods	13,9	-6,2	-5,7	-1,1
Special indices:				
10-11 Food industry	7,9	3,8	4,1	1,9
13-15 Textile, clothing and leather industry	1,2	-2,4	-4,6	1,7
16-17 Forest industry	13,5	6,8	6,9	3,2
19-22 Chemical industry	13,7	-4,7	-4,7	-0,7
24-30 Metal industry	38,1	6,1	6,8	0,3
26-27 Electrical and electronics industry	12,6	-0,8	-0,8	2,2
25,28-30,33 Machinery and metal product industry	25,2	11,4	12,0	-0,4
29-30 Manufacture of transport equipment	2,7	12,2	12,2	-2,9

Appendix figures

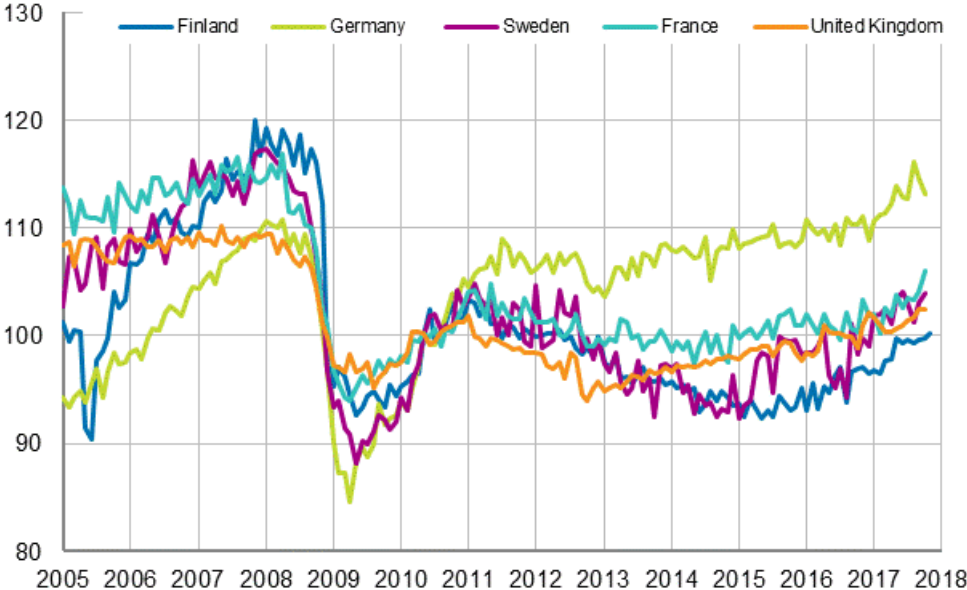
Appendix figure 1. Working day adjusted change percentage of industrial output November 2016 /November 2017, TOL 2008



Appendix figure 2. Seasonally adjusted change percentage of industrial output October 2017 /November 2017, TOL 2008



Appendix figure 3. Seasonally adjusted industrial output Finland, Germany, Sweden, France and United Kingdom (BCD) 2005 - 2017, 2010=100, TOL 2008



Revisions in these statistics

The data of the original series of industrial output have become revised according to the table below. For more information about data revisions, see Section 3 of the quality description (only in Finnish).

Revisions to data on annual changes in main industries

Main industries and Statistical reference month		Annual change (%)		Revision (%-point)
		1st release (%)	Latest release (10.01.2018) (%)	
BCDE Total industry	2017 / 06	1,3	3,8	2,5
	2017 / 07	2,2	3,0	0,8
	2017 / 08	5,2	5,7	0,5
	2017 / 09	2,5	1,2	-1,3
	2017 / 10	4,2	5,3	1,1
C Manufacturing	2017 / 06	2,3	5,1	2,8
	2017 / 07	2,0	2,9	0,9
	2017 / 08	6,7	7,2	0,5
	2017 / 09	2,0	0,6	-1,4
	2017 / 10	4,6	5,9	1,3
D Electricity, gas, steam and air conditioning supply	2017 / 06	-3,9	-3,9	0,0
	2017 / 07	-3,9	-3,9	0,0
	2017 / 08	-5,3	-5,3	0,0
	2017 / 09	3,9	3,9	0,0
	2017 / 10	-0,5	-0,5	0,0
10-11 Food industry	2017 / 06	-0,8	1,4	2,2
	2017 / 07	-0,9	2,1	3,0
	2017 / 08	3,3	5,3	2,0
	2017 / 09	-0,6	-0,6	0,0
	2017 / 10	4,3	4,6	0,3
16-17 Forest industry	2017 / 06	1,7	2,6	0,9
	2017 / 07	3,6	4,8	1,2
	2017 / 08	4,4	4,1	-0,3
	2017 / 09	5,6	5,9	0,3
	2017 / 10	2,7	3,7	1,0
19-22 Chemical industry	2017 / 06	4,6	8,1	3,5
	2017 / 07	2,2	1,7	-0,5
	2017 / 08	4,6	5,3	0,7
	2017 / 09	-11,1	-10,1	1,0
	2017 / 10	-1,9	-0,3	1,6
24-30, 33 Metal industry	2017 / 06	2,3	5,5	3,2
	2017 / 07	2,2	2,6	0,4
	2017 / 08	10,1	10,3	0,2
	2017 / 09	5,7	2,6	-3,1
	2017 / 10	7,4	9,1	1,7
26-27 Electrical and electronics industry	2017 / 06	9,0	17,6	8,6
	2017 / 07	-4,2	-4,6	-0,4
	2017 / 08	-1,4	-2,8	-1,4
	2017 / 09	4,0	-4,9	-8,9
	2017 / 10	-0,6	-1,9	-1,3

Main industries and Statistical reference month		Annual change (%)		Revision (%-point)
		1st release (%)	Latest release (10.01.2018) (%)	
Manufacturing excl. electrical and electronics industry	2017 / 06	1,1	2,9	1,8
	2017 / 07	3,2	4,3	1,1
	2017 / 08	8,1	8,9	0,8
	2017 / 09	1,7	1,6	-0,1
	2017 / 10	5,5	7,3	1,8

Inquiries

Kari Rautio 029 551 2479

Maarit Mäkelä 029 551 3324

Director in charge:

Sami Saarikivi

volyymi.indeksi@stat.fi

www.stat.fi

Source: Volume Index of Industrial Output 2017, November. Statistics Finland