

Prices of dwellings in housing companies

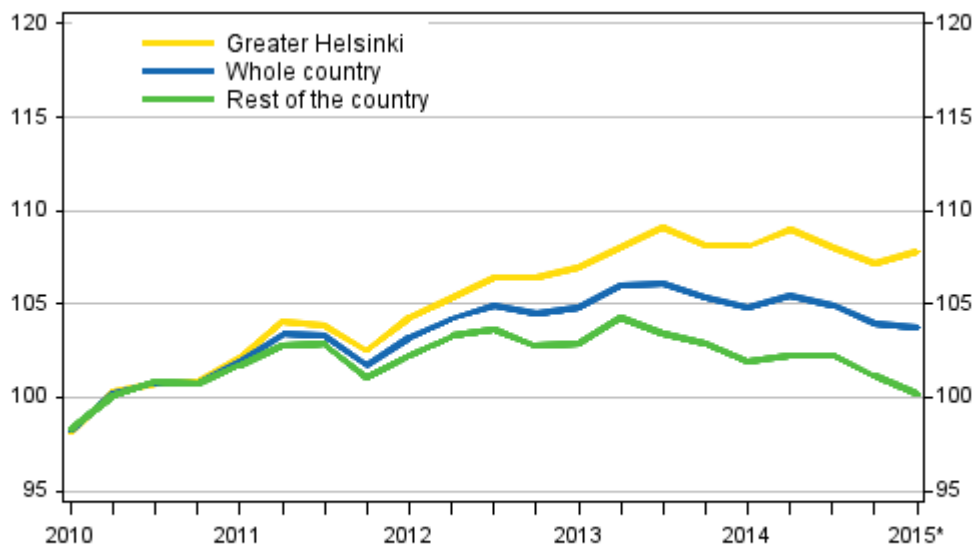
2015, March and 1st quarter

Prices of dwellings in housing companies decreased in the first quarter

Corrected on 13 May 2015. The corrections are indicated in red.

According to Statistics Finland’s preliminary data, prices of old dwellings in housing companies went down by 0.2 per cent in the whole country from the previous quarter in the first quarter 2015. In Greater Helsinki, prices went up by 0.6 per cent, while in the rest of Finland they went down by 1.0 per cent. Compared with the corresponding period of 2014, prices fell by 1.1 per cent in the whole country. In Greater Helsinki, prices went down by 0.3 per cent, and in the rest of the country by 1.8 per cent.

Development of prices of old dwellings in housing companies quarterly, index 2010=100



*Preliminary data for the year 2015

In the first quarter of 2015, the average price per square metre of an old dwelling in a housing company was EUR 2,256 in the whole country, EUR 3,551 in Greater Helsinki and EUR 1,675 elsewhere in the country.

Prices of new dwellings in blocks of flats and terraced houses rose by 2.8 per cent in the whole country from the previous quarter. In Greater Helsinki, prices fell by 0.9 per cent, while in the rest of the country prices went up by 5.0 per cent.

Compared with the same period in 2014, prices of new units in housing companies rose by 2.7 per cent in the whole country. In Greater Helsinki, prices went down by 3.0 per cent, while in the rest of Finland they went up by 6.0 per cent. The average price per square metre of new units in housing companies was EUR 3,532 in the whole country, EUR 4,803 in Greater Helsinki and EUR 3,084 in the rest of the country.

The information on old dwellings derive from the statistics on the prices of dwellings in housing companies compiled by Statistics Finland from the Tax Administration's data. The preliminary data cover roughly two-thirds of completed transactions in old dwellings in blocks of flats and terraced houses. The data on new dwellings in blocks of flats are based on information on the transaction prices of the largest building contractors and estate agents. More detailed price data on dwellings in housing companies are available at http://tilastokeskus.fi/til/ashi/tau_en.html.

Annual statistics for 2014

In 2014, good 62,300 transactions of old dwellings in housing companies were completed in the whole country. The number of transactions fell by 7.4 per cent in the whole country from the previous year. In Greater Helsinki, the number of transactions decreased by 1.3 per cent and in the rest of the country by 9.4 per cent. Last year, the average price per square metre of old dwellings in housing companies was EUR 2,266 in the whole country, EUR 3,530 in Greater Helsinki and EUR 1,699 elsewhere in the country. From 2013, prices of old dwellings fell by 0.7 per cent in the whole country. In Greater Helsinki prices remained unchanged and in the rest of Finland they fell by 1.4 per cent.

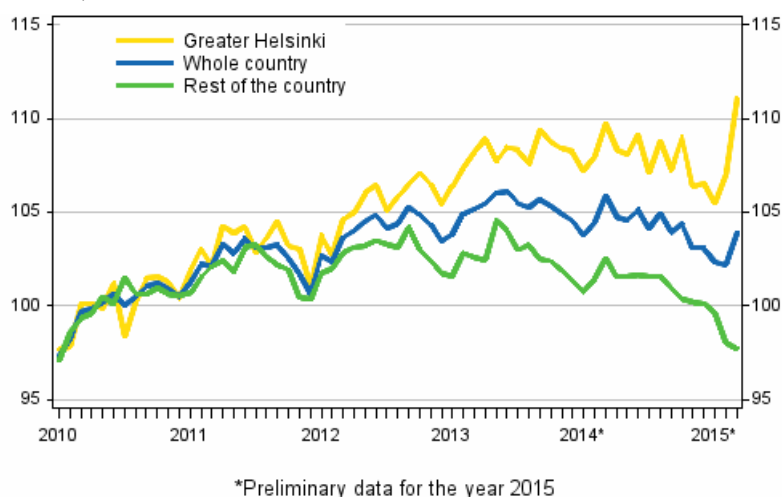
Last year, the total sum of housing transactions was close on EUR 9.5 billion, which was slightly over EUR 0.5 billion less than in 2013. Slightly over one-third of the transactions in the whole country were made in the region of Uusimaa and their value was over one-half of the total sum.

In 2014, prices of new dwellings in blocks of flats and terraced houses rose by 1.4 per cent in the whole country. In Greater Helsinki, prices went up by 1.4 per cent and in the rest of the country by 1.5 per cent compared with the previous year. In the whole country, the average price of a new dwelling was EUR 3505, in Greater Helsinki EUR 4,777 and elsewhere in Finland EUR 3,506.

Prices of dwellings in housing companies rose in March

According to Statistics Finland's preliminary data, prices of old dwellings in blocks of flats and terraced houses went up by 1.7 per cent from February to March in the whole country. In Greater Helsinki, prices went up by 3.8 per cent, while in the rest of Finland they went down by 0.3 per cent. Compared with March 2014, prices fell by 1.9 per cent in the whole country. In Greater Helsinki, prices went up by 1.2 per cent from the year before, but in the rest of the country they went down by 4.7 per cent.

Development of prices of old dwellings in housing companies by month, index 2010=100



In March 2015, the average price per square metre of an old dwelling in a housing company was EUR 2,235 in the whole country, EUR 3,629 in Greater Helsinki and EUR 1,610 elsewhere in the country.

When the monthly statistics on prices of dwellings in housing companies are published they cover approximately 40 per cent of all transactions made in the latest statistical month. The monthly data become revised during the following months so that the final data for the year are published in the release concerning the first quarter of the following year. For further information about data revisions, see separate tables.

Statistics Finland has revised the statistics on the prices of dwellings in housing companies. The revised statistics provide a timelier than before description of the prices of dwellings, as the year 2010 has been adopted as the base year of new and old dwellings. In connection with the adoption of the new base year the weight structure of the index has been revised to correspond to the 2010 stock of dwellings in housing corporations by type of dwelling, number of dwellings, size, location and price level. In addition, the statistical model used in index calculations, price review procedures, and classifications have been updated.

Retrospective time series starting from 2010 have been calculated for the indices based on the new calculation method. These backcasted series can to some extent differ from previously published indices for the respective time periods. Differences are generated particularly in regions where the number of observations is low. For the whole country, the differences are small.

Contents

1. Prices of dwellings in blocks of flats went up in the January to March period.....	5
2. Prices of old dwellings in terraced houses fell in the January to March period.....	6
3. Changes in prices of dwellings and in earnings level.....	7

Tables

Appendix tables

Appendix table 1. Unencumbered average prices per square metre of old dwellings in housing companies, March 2015.....	8
Appendix table 2. Unencumbered average prices per square metre of blocks of flats, March 2015.....	8
Appendix table 3. Unencumbered average prices per square metre of terraced houses, March 2015.....	9
Appendix table 4. Unencumbered average prices per square metre of old dwellings in housing companies, February 2015.....	9
Appendix table 5. Unencumbered average prices per square metre of old dwellings in housing companies, January 2015.....	10

Figures

Figure 1. Quarter-on-quarter changes in prices of dwellings in old blocks of flats.....	5
Figure 2. Quarter-on-quarter changes in prices of dwellings in old terraced houses.....	6
Figure 3. Year-on-year changes in prices of dwellings and in wages and salaries 1971–2015, 1st quarter.....	7

Appendix Figures

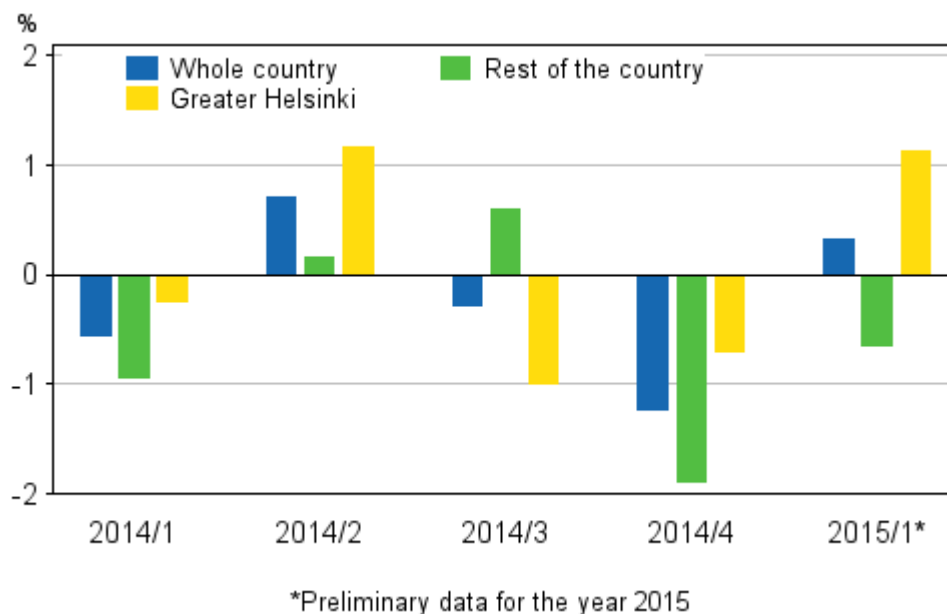
Appendix figure 1. Average prices per square meter of dwellings in old blocks of flats	11
Appendix figure 2. Average prices per square meter of dwellings in old terraced houses.....	11
Appendix figure 3. Price development of old and new dwellings from 2010.....	12
Appendix figure 4. Changes in prices of dwellings in major cities, 1st quarter 2015.....	12
Appendix figure 5. Real Price Index of dwellings in old blocks of flats 1970=100.....	13

Revisions in these statistics.....	14
Quality Description: Prices of dwellings in housing companies.....	16

1. Prices of dwellings in blocks of flats went up in the January to March period

According to preliminary data, the prices of old dwellings in blocks of flats rose by 0.3 per cent in the whole country compared to the previous quarter. In Greater Helsinki, prices went up by 1.1 per cent, while in the rest of Finland they went down by 0.6 per cent. Compared with the corresponding quarter of 2014, prices fell by 0.5 per cent in the whole country. In Greater Helsinki, prices went up by 0.6 per cent, while in the rest of Finland they went down by 1.8 per cent.

Figure 1. Quarter-on-quarter changes in prices of dwellings in old blocks of flats



Viewed by type of apartment, prices of one-room flats went up by 2.9 per cent in Greater Helsinki and by 0.3 per cent in the rest of Finland from the previous quarter. Over the same period, prices of two-room flats rose by 0.9 per cent in Greater Helsinki and went down by 2.3 per cent in the rest of Finland. Prices of three-room and larger flats went up by 1.0 per cent in Greater Helsinki and by 0.5 per cent in the rest of the country.

In the first quarter of 2015, the average price per square metre of an old dwelling in a block of flats was EUR 2,412 in the whole country, EUR 3,736 in Greater Helsinki and EUR 1,674 elsewhere in the country.

Prices of new dwellings in blocks of flats went up by 3.1 per cent from the previous quarter in the whole country. In Greater Helsinki, prices fell by 2.4 per cent, while in the rest of Finland they went up 6.9 per cent. Compared with the corresponding period of 2014, prices of new dwellings in blocks of flats went up by 2.9 per cent in the whole country. In Greater Helsinki, prices went down by 5.7 per cent, while in the rest of Finland they went up by 9.1 per cent.

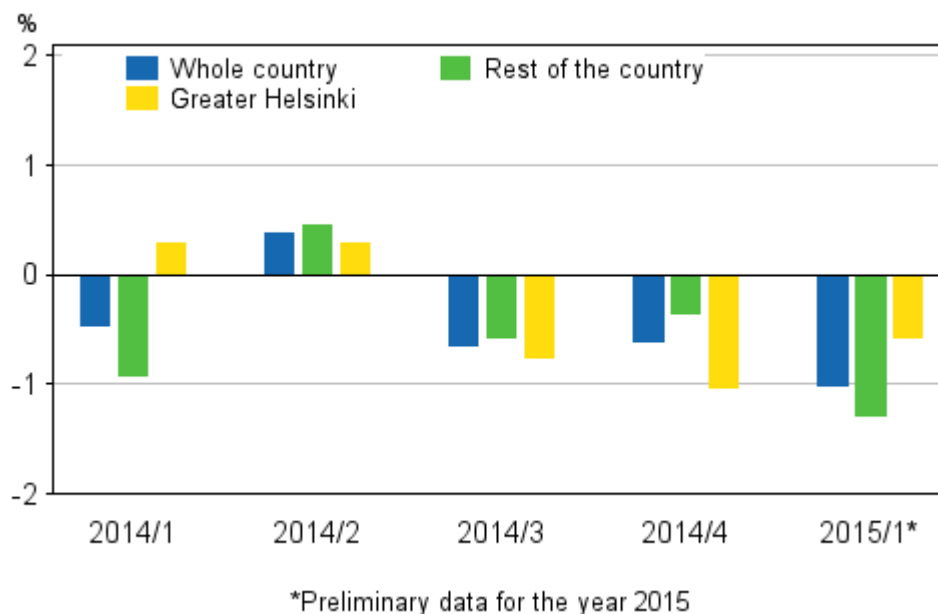
In the first quarter of 2015, the average price per square metre of a new dwelling in a block of flats was EUR 3,921 in the whole country, EUR 5,152 in Greater Helsinki and EUR 3,384 elsewhere in the country.

Prices of old dwellings in blocks of flats decreased by 0.2 per cent in the whole country in 2014 compared with the previous year. In Greater Helsinki, prices went up by 0.4 per cent, while in the rest of Finland they went down by 0.8 per cent. In Greater Helsinki, the price per square metre of an old dwelling in a block of flats was EUR 3,684 and in the rest of Finland EUR 1,689. In 2014, the price per square metre of a new dwelling in a block of flats was EUR 5,102 in Greater Helsinki and EUR 3,373 elsewhere in the country. Compared with the previous year, prices of dwellings in new blocks of flats rose in the whole country by 2.1 per cent. In Greater Helsinki, prices went up by 1.8 per cent and in the rest of the country by 2.4 per cent.

2. Prices of old dwellings in terraced houses fell in the January to March period

According to preliminary data, prices of old dwellings in terraced houses fell by an average of 1.0 per cent from the previous quarter in the whole country. Prices went down by 0.6 per cent in Greater Helsinki and by 1.3 per cent in the rest of Finland. Compared with the corresponding period of 2014, prices of old dwellings in terraced houses went down by 1.9 per cent in the whole country. In Greater Helsinki, prices went down by 2.0 per cent, and in the rest of the country by 1.7 per cent.

Figure 2. Quarter-on-quarter changes in prices of dwellings in old terraced houses



In the first quarter of 2015, the average price per square metre of an old dwelling in a terraced house was EUR 2,059 in the whole country, EUR 3,215 in Greater Helsinki and EUR 1,677 elsewhere in the country.

Prices of new dwellings in terraced houses rose by 2.3 per cent from the previous quarter in the whole country. Prices went up by 4.6 per cent in the capital region and by 1.5 per cent elsewhere in Finland. Compared with the corresponding period of 2014, prices of new dwellings in terraced houses rose by an average of 2.2 per cent in the whole country. Prices went up by 7.7 per cent in Greater Helsinki and by 0.3 per cent elsewhere in Finland.

In the first quarter of 2015, the average price per square metre for a new dwelling in a terraced house was EUR 2,830 in the whole country, EUR 3,759 in Greater Helsinki and EUR 2,622 elsewhere in Finland.

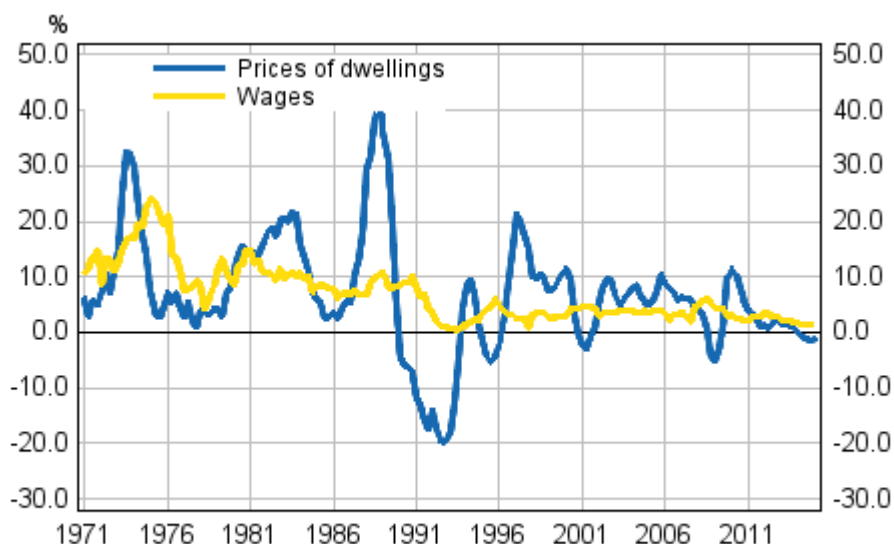
Prices of old dwellings in terraced houses decreased by 1.5 per cent in the whole country in 2014 compared with the year before. In Greater Helsinki, prices went down by 0.7 per cent and in the rest of the country by 2.0 per cent. The price per square metre of an old dwelling in a terraced house was EUR 3,252 in Greater Helsinki and EUR 1,710 elsewhere in Finland. Prices of new dwellings in terraced houses decreased by 0.3 per cent in the whole country. Prices went down by 0.2 per cent in Greater Helsinki, while in the rest of Finland prices went down by 0.3 per cent. The average price per square metre of a new dwelling in a terraced house was EUR 3,806 in Greater Helsinki and EUR 2,568 elsewhere in Finland.

3. Changes in prices of dwellings and in earnings level

The price development of dwellings has varied much within the last 40 years or so. During the overheating of the housing market, prices rose by over 40 per cent in the last quarter of 1988 compared with the previous year. Correspondingly, during the recession of the early 1990s, prices of dwellings fell by as much as 20 per cent from the year before. From 1996 dwelling prices rose up to the middle of the year 2008, with the exception of the year 2001. The outbreak of the international financial crisis in autumn 2008 slowed down the housing market and prices fell by five per cent from the third quarter of 2008 until the first quarter of 2009. From the middle of 2009 onwards, prices of dwellings have continued to grow again. The rise in dwelling prices has clearly slowed down from year 2011 and in 2014, the prices of dwellings made a downturn.

Over the same time period changes in wages and salaries have been more moderate than changes on the housing market, except for the mid-1970s, when the earnings level rose by over 20 per cent per year due to the great inflation. Over the 2000s wages and salaries have gone up yearly by an average of 3.5 per cent. The average annual rise in prices of dwellings has been about 0.5 percentage point faster, which has undermined the purchasing power of wages and salaries on the housing markets.

Figure 3. Year-on-year changes in prices of dwellings and in wages and salaries 1971–2015, 1st quarter



*Preliminary data for index of wages and salary earnings in the year 2014

Appendix tables

Appendix table 1. Unencumbered average prices per square metre of old dwellings in housing companies, March 2015¹⁾

Area	Price, euro/m ²	Index (2010=100)	Monthly change, %	Yearly change, %	Number
Whole country	2 235	103,9	1,7	-1,9	2 819
Greater Helsinki	3 629	111,1	3,8	1,2	719
Rest of the country (whole country - Greater Helsinki)	1 610	97,7	-0,3	-4,7	2 100
Satellite municipalities ²⁾	2 166	99,3	-2,1	-6,2	219
Southern Finland	2 652	106,0	2,1	-1,4	1 104
Western Finland	1 729	103,7	3,7	0,2	203
Eastern Finland	1 263	89,7	-4,9	-12,2	41
Northern Finland	1 592	96,1	-2,1	-2,1	135
Helsinki	4 076	115,2	5,5	2,2	434
Espoo-Kauniainen	3 295	104,9	0,6	-1,3	147
Vantaa	2 725	105,0	2,2	1,8	138
Tampere	2 282	107,5	3,6	3,3	129
Turku	1 994	107,7	0,9	1,8	116
Oulu	1 748	94,0	-3,9	-3,8	124

1) Preliminary data

2) Satellite municipalities = Hyvinkää, Järvenpää, Kerava, Kirkkonummi, Nurmijärvi, Riihimäki, Sipoo, Tuusula and Vihti

Appendix table 2. Unencumbered average prices per square metre of blocks of flats, March 2015¹⁾

Area	Price, euro/m ²	Index (2010=100)	Monthly change, %	Yearly change, %
Whole country	2 412	106,4	1,9	-1,1
Greater Helsinki	3 872	114,2	3,2	2,3
Rest of the country (whole country - Greater Helsinki)	1 598	97,9	0,2	-5,1
Satellite municipalities ²⁾	1 958	97,6	-4,9	-11,7
Southern Finland	2 830	108,5	1,3	-1,0
Western Finland	1 766	108,1	8,5	5,0
Eastern Finland	1 339	87,5	-3,3	-14,4
Northern Finland	1 692	93,8	-4,1	-4,4
Helsinki	4 332	117,6	4,6	3,5
Espoo-Kauniainen	3 275	105,2	-1,4	-2,8
Vantaa	2 569	104,6	1,0	1,4
Tampere	2 306	110,5	5,0	7,2
Turku	1 950	107,6	1,3	0,7
Oulu	1 770	92,8	-7,0	-4,8

1) Preliminary data

2) Satellite municipalities = Hyvinkää, Järvenpää, Kerava, Kirkkonummi, Nurmijärvi, Riihimäki, Sipoo, Tuusula and Vihti

Appendix table 3. Unencumbered average prices per square metre of terraced houses, March 2015¹⁾

Area	Price, euro/m ²	Index (2010=100)	Monthly change, %	Yearly change, %
Whole country	2 013	100,5	1,4	-2,9
Greater Helsinki	3 189	105,5	5,0	-0,8
Rest of the country (whole country - Greater Helsinki)	1 624	97,6	-0,8	-4,2
Satellite municipalities ²⁾	2 312	100,3	-0,3	-2,8
Southern Finland	2 395	102,2	3,3	-1,9
Western Finland	1 689	99,2	-1,3	-4,6
Eastern Finland ³⁾
Northern Finland	1 512	98,1	-0,4	-0,2
Helsinki	3 221	106,4	9,6	-3,0
Espoo-Kauniainen	3 311	104,8	2,0	-0,2
Vantaa	2 916	105,7	3,3	2,2
Tampere	2 236	102,7	1,2	-3,0
Turku
Oulu	1 728	95,1	-0,9	-2,9

1) Preliminary data

2) Satellite municipalities = Hyvinkää, Järvenpää, Kerava, Kirkkonummi, Nurmijärvi, Riihimäki, Sipoo, Tuusula and Vihti

3) . = less than 20 transactions

Appendix table 4. Unencumbered average prices per square metre of old dwellings in housing companies, February 2015¹⁾

Area	Price, euro/m ²	Index (2010=100)	Monthly change, %	Yearly change, %	Number
Whole Country	2 197	102,2	-0,1	-2,2	4 390
Greater Helsinki	3 455	107,0	1,5	-0,9	1 263
Rest of the country (whole country - Greater Helsinki)	1 633	98,0	-1,6	-3,3	3 127
Satellite municipalities ²⁾	2 186	101,4	1,5	-2,7	295
Southern Finland	2 579	103,8	0,7	-2,0	2 327
Western Finland	1 732	100,1	-2,3	-2,2	748
Eastern Finland	1 352	94,3	-5,8	-5,9	304
Northern Finland	1 557	98,2	2,8	0,6	301
Helsinki	3 848	109,1	1,9	-1,3	744
Espoo-Kauniainen	3 178	104,4	1,2	-0,4	299
Vantaa	2 636	102,7	0,1	0,3	220
Tampere	2 248	103,8	-2,2	-0,9	271
Turku	2 052	106,7	5,1	2,7	233
Oulu	1 675	97,8	2,8	1,0	175

1) Updated preliminary data

2) Satellite municipalities = Hyvinkää, Järvenpää, Kerava, Kirkkonummi, Nurmijärvi, Riihimäki, Sipoo, Tuusula and Vihti

Appendix table 5. Unencumbered average prices per square metre of old dwellings in housing companies, January 2015¹⁾

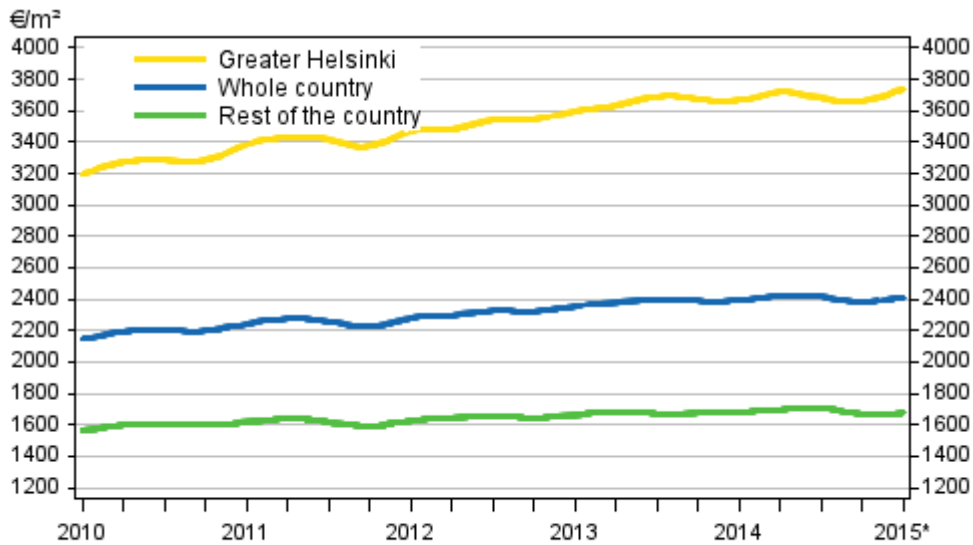
Area	Price, euro/m ²	Index (2010=100)	Monthly change, %	Yearly change, %	Number
Whole Country	2 218	102,3	-0,7	-1,4	3 701
Greater Helsinki	3 446	105,5	-1,0	-1,6	1 047
Rest of the country (whole country - Greater Helsinki)	1 668	99,6	-0,5	-1,1	2 654
Satellite municipalities ²⁾	2 167	99,9	-2,0	-2,0	225
Southern Finland	2 598	103,1	-1,5	-1,9	2 104
Western Finland	1 749	102,4	0,9	-0,5	847
Eastern Finland	1 504	100,1	3,9	0,8	307
Northern Finland	1 451	95,5	-1,1	-0,0	298
Helsinki	3 827	107,1	-1,8	-2,2	624
Espoo-Kauniainen	3 239	103,1	-0,8	-0,6	249
Vantaa	2 558	102,6	2,1	-0,6	174
Tampere	2 202	106,1	-0,9	-1,3	251
Turku	1 946	101,5	-2,2	-1,8	209
Oulu	1 644	95,1	-2,5	0,1	144

1) Updated preliminary data

2) Satellite municipalities = Hyvinkää, Järvenpää, Kerava, Kirkkonummi, Nurmijärvi, Riihimäki, Sipoo, Tuusula and Vihti

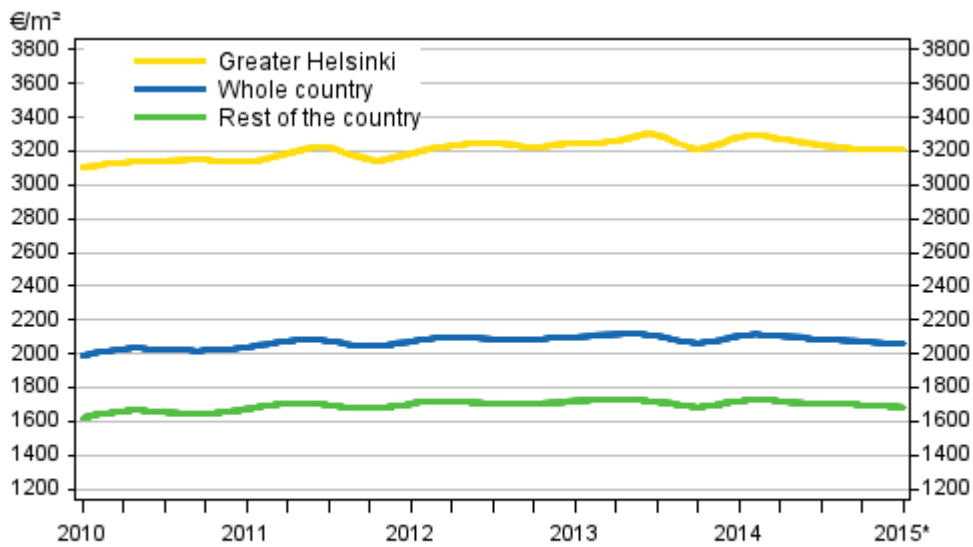
Appendix Figures

Appendix figure 1. Average prices per square meter of dwellings in old blocks of flats



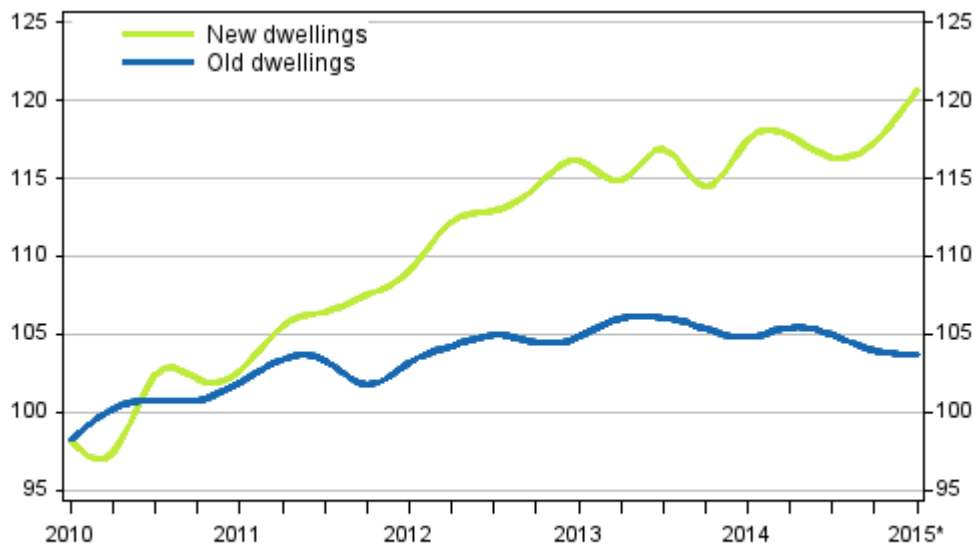
*Preliminary data for the year 2015

Appendix figure 2. Average prices per square meter of dwellings in old terraced houses



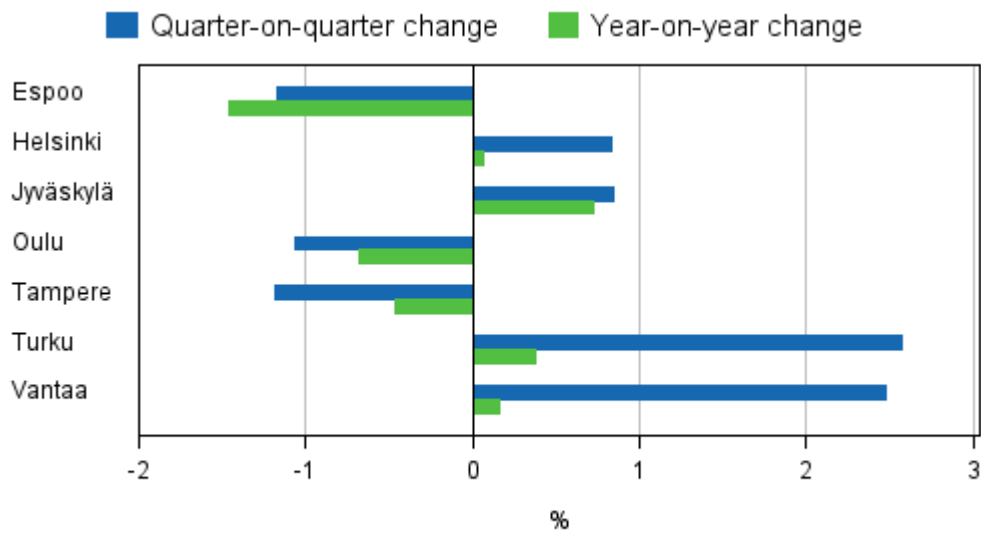
*Preliminary data for the year 2015

Appendix figure 3. Price development of old and new dwellings from 2010



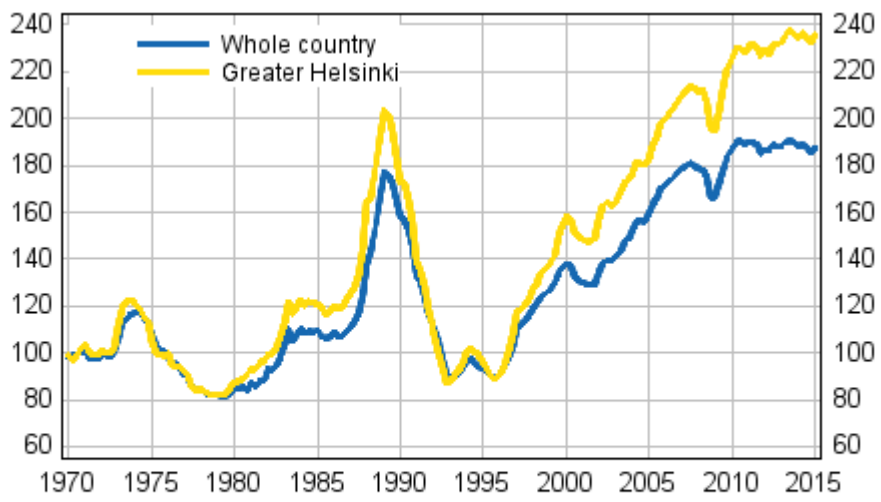
*Preliminary data for the year 2015

Appendix figure 4. Changes in prices of dwellings in major cities, 1st quarter 2015



*Preliminary data for the year 2015

**Appendix figure 5. Real Price Index of dwellings in old blocks of flats
1970=100**



*Preliminary data for the year 2015

Revisions in these statistics

The data of the statistics have become revised according to the table below. For more information about data revisions, see Section 3 of the quality description.

Revisions to data on monthly changes in prices of dwellings in housing companies, monthly statistics¹⁾

Area and reference time		Monthly change, %		Revision, percentage point
		Latest release 29.4.2015	1st release	
Whole country	11/2014	-1,3	-1,7	0,4
	12/2014	0,0	0,1	-0,1
	01/2015	-0,7	-0,8	0,1
	02/2015	-0,1	0,1	-0,2
Greater Helsinki	11/2014	-2,4	-1,6	-0,8
	12/2014	0,2	0,2	0,0
	01/2015	-1,0	-0,3	-0,7
	02/2015	1,5	0,4	1,1
Rest of the country	11/2014	-0,2	-1,8	1,6
	12/2014	-0,1	-0,1	0,0
	01/2015	-0,5	-1,2	0,7
	02/2015	-1,6	-0,2	-1,4

1) The 1st release refers to the time when data for the reference period were released for the first time. The revision describes the difference of monthly change percentages between the latest and first release.

Revisions to data on annual changes in prices of dwellings in housing companies, monthly statistics¹⁾

Area and reference time		Annual changes, %		Revision, percentage point
		Latest release 29.4.2015	1st release	
Whole country	11/2014	-1,8	-2,6	0,8
	12/2014	-1,4	-0,8	-0,6
	01/2015	-1,4	-1,5	0,1
	02/2015	-2,2	-1,6	-0,6
Greater Helsinki	11/2014	-1,9	-2,0	0,1
	12/2014	-1,6	-0,6	-1,0
	01/2015	-1,6	-1,5	-0,1
	02/2015	-0,9	-0,7	-0,2
Rest of the country	11/2014	-1,7	-3,1	1,4
	12/2014	-1,2	-0,9	-0,3
	01/2015	-1,1	-1,5	0,4
	02/2015	-3,3	-2,3	-1,0

1) The 1st release refers to the time when data for the reference period were released for the first time. The revision describes the difference of yearly change percentages between the latest and first release.

Revisions to data on quarterly changes in prices of dwellings in housing companies, quarterly statistics¹⁾

Area and referencetime		Quarterly change, %		Revision, percentage point
		Latest release 29.4.2015	1st release	
Whole country	1/2014	-0,5	-0,7	0,2
	2/2014	0,6	0,8	-0,2
	3/2014	-0,4	-0,7	0,3
	4/2014	-1,0	-0,4	-0,6
Greater Helsinki	1/2014	-0,1	-0,4	0,3
	2/2014	0,9	1,7	-0,8
	3/2014	-0,9	-1,3	0,4
	4/2014	-0,8	-0,2	-0,6
Rest of the country	1/2014	-0,9	-1,0	0,1
	2/2014	0,3	0,1	0,2
	3/2014	0,0	-0,2	0,2
	4/2014	-1,1	-0,5	-0,6

1) The 1st release refers to the time when data for the reference period were released for the first time. The revision describes the difference of quarterly change percentages between the latest and first release.

Revisions to data on yearly changes in prices of dwellings in housing companies, quarterly statistics¹⁾

Area and referencetime		Annual change, %		Revision, percentage point
		Latest release 29.4.2015	1st release	
Whole country	1/2014	0,0	0,0	0,0
	2/2014	-0,6	-0,3	-0,3
	3/2014	-1,0	-1,0	0,0
	4/2014	-1,3	-1,0	-0,3
Greater Helsinki	1/2014	1,0	0,9	0,1
	2/2014	0,9	1,6	-0,7
	3/2014	-1,0	-0,8	-0,2
	4/2014	-0,9	-0,5	-0,4
Rest of the country	1/2014	-0,9	-0,8	-0,1
	2/2014	-1,9	-1,9	0,0
	3/2014	-1,1	-1,2	0,1
	4/2014	-1,7	-1,5	-0,2

1) The 1st release refers to the time when data for the reference period were released for the first time. The revision describes the difference of yearly change percentages between the latest and first release.

Quality Description: Prices of dwellings in housing companies

1. Relevance

1.1 Information content and purpose of use

The statistics on prices of dwellings in housing companies describe the unencumbered prices per square metre of old dwellings in housing companies, and monthly, quarterly and annual changes in them. Data concerning new dwellings are published quarterly and annually. The statistics contain data classified by area and type of building for the examined period and for a longer time period. The purpose of the statistics is to provide information about price development on the housing market.

1.2. Concepts, classifications and data

The data and the data suppliers:

Old dwellings: The data of the statistics on dwelling prices are based on the price information gathered by the Finnish Tax Administration for asset transfer tax calculation purposes. Additionally, the Tax Administration's Register of Real Estate Property and Statistics Finland's data on the dwelling stock that are based on the Population Register Centre's Register of Buildings and Dwellings are also used for the statistics.

New dwellings: The data of the statistics on dwelling prices are based on the information Statistics Finland receives via a private price monitoring service about transactions in new dwellings made by the largest real estate agents and building contractors. The monthly statistics do not contain information on new dwellings due to the scarcity of statistical data.

Used concepts:

Dwelling: A dwelling refers to a room or suite of rooms that is equipped with a kitchen, kitchenette or cooking area and is intended for year-round habitation.

Price per square metre of dwelling: The statistics are compiled from data on unencumbered prices, in other words, prices inclusive of the debt portion. The published price concept is price per square metre (EUR/m²).

Floor area of dwelling: The floor area (m²) of a dwelling is calculated from the inner surfaces of the walls enclosing it. The floor areas of auxiliary spaces (utility space, walk-in wardrobe, etc.), bathroom, hobby room, fireplace room, sauna in dwelling, washroom and changing room, and rooms used as working space if no hired employees work in them are also included in the floor area of a dwelling. Garage, cellar, sauna space in unoccupied basement, unheated storage space, balcony, porch, veranda, vestibule and unoccupied attic space are not included in the floor area of a dwelling.

First home: First-time dwelling transactions include those that are entitled to the exemption from the asset transfer tax for first-time homebuyers (www.vero.fi).

Old/new dwelling: An old dwelling refers to a dwelling that has not been completed in the examined year or the year before it. Respectively, a new dwelling refers to a dwelling completed in the statistical reference year or the year before it that is sold for the first time.

Type of building: The dwellings in the statistics are classified into blocks of flats and terraced houses according to type of building. The data on terraced houses also include detached houses whose tenure is based on ownership of housing company shares.

Type of financing: Dwellings financed with ARA subsidised housing loans and price controlled HITAS dwellings are not included in the non-subsidised dwelling category used in the statistics.

Number of rooms: A room is defined as a space with one or more windows that has a floor area of at least seven square metres and mean height of at least two metres. A hall, porch, bed recess or other similar space is not regarded as a room. Kitchen is not included in the number of rooms. Dwellings with at least

three rooms are classified into room number category 3h+. In the monthly statistics data are not published by number of rooms due to the scarcity of statistical data.

(Nominal) price index: Describes the change in prices compared to the base period of the index concerned. The base period for the indices of old dwellings in housing companies are 1970, 1983, 2000, 2005 and 2010, and the base period for new dwellings are 2005 and 2010.

Real price index: Describes the change in real prices compared to the index base period. The real price index is derived by dividing the point figure of the nominal price index for the area with the point figure of the Consumer Price Index for the whole country in the corresponding time period and base year.

Distribution parameters:

Q1 (lower quartile) = 25% of the observations remain below.

Med (median) = Middle observation when the observations are arranged in size order.

Q3 (upper quartile) = 75% of the observations remain below.

Classifications:

Annual and quarterly statistics:

Regional division, old dwellings: The statistics use diverse area combinations, such as Greater Helsinki Area, satellite municipalities around the Greater Helsinki Area, regions and urban sub-areas. The Greater Helsinki Area comprises Helsinki, Espoo, Vantaa and Kauniainen, which in statistics is included in Espoo. The satellite municipalities are Hyvinkää, Järvenpää, Kerava, Kirkkonummi, Nurmijärvi, Riihimäki, Sipoo, Tuusula and Vihti. Regions are defined according to the decision of the Council of State. The urban sub-areas are formed of postal code areas using price level and location as the criteria. Details of the used regional classifications are appended to this publication and can be found on Statistics Finland's website.

Regional division, new dwellings: Due to the low number of transactions, the statistics on the prices of new dwellings are compiled according to a less detailed regional division than the statistics on the prices of old dwellings. The classification used in the statistics on the prices of new dwellings also takes into consideration the needs of the Consumer Price Index, hence the regional classification uses the division into major regions. The area categories are Whole country, Greater Helsinki, Rest of Finland (the same as with old dwellings, Whole country exclusive of Greater Helsinki), Rest of Uusimaa (exclusive of Greater Helsinki) and major regions Southern Finland, Western Finland, Eastern Finland, and Northern Finland.

Monthly statistics:

Regional division: The area categories are: Whole country, Greater Helsinki, Rest of Finland (Whole country exclusive of Greater Helsinki), Satellite municipalities (Hyvinkää, Järvenpää, Kerava, Kirkkonummi, Nurmijärvi, Riihimäki, Sipoo, Tuusula, Vihti), Helsinki, Espoo-Kauniainen, Vantaa, Tampere, Turku, Oulu and major regions Southern Finland, Western Finland, Eastern Finland, and Northern Finland.

2. Methodological description

The statistics on the prices of dwellings in housing companies describe the unencumbered prices per square metre of dwellings in housing companies and changes in them. The statistics include both unencumbered prices per square metre calculated as averages directly from the data and the price index for dwellings in housing companies that describes the change in prices.

The price index aims at answering the question how much more or less a typical dwelling in a housing company now costs compared with before on the basis of the total number of actual transaction prices. Because the composition of dwellings sold at different times is not the same, monitoring average price changes is not sufficient. For example, the relative shares of different types of dwellings among sold dwellings may vary from quarter to quarter. When calculating the index, the so-called hedonic method is used, where the aim is to separate the genuine price development from price changes caused by dwelling characteristics at different points in time with the help of data classification and regression analysis.

Classification: Because the location, type of building and number of rooms are the most important price determinants, the composition of sold dwellings is first standardised by classifying these variables. The

regional classification has been constructed so as to be geographically meaningful and as homogeneous as possible in respect of price levels of dwellings. In the regional classification, larger cities have been divided into several sub-areas and smaller municipalities, where only few transactions take place, have been combined. Within areas, dwellings in a housing company are divided by type of building into two categories: blocks of flats and terraced and detached houses. Dwellings in blocks of flats have been classified further by the number of rooms into one-room dwellings, two-room dwellings and dwellings with three or more rooms. Terraced houses have been divided by the number of rooms into two categories: dwellings with fewer than three rooms and dwellings with at least three rooms.

Regression model and quality adjustment: The used classification does not, however, homogenise the data sufficiently, because inside a class, dwellings differ from another in terms of micro-location, floor area, year of completion, and so on. The price data on old dwellings contain data on the year of completion, floor area, and location of the dwelling on the postal code level. The price data on new dwellings include data on the floor area and location of the dwelling on the postal code level. With the help of the regression model, these data are used to quality adjust for changes in the composition of the data between the base and reference periods.

An example of a quality adjustment: during the statistical quarter the dwellings in a certain area have, on average, a larger floor area than the dwellings in the base period. In the quality adjustment, the index is revised upwards as otherwise the lower price per square metre caused by the larger floor area would erroneously be interpreted as a drop in prices. If there is no difference in the floor areas of the dwellings sold during the statistical quarter compared to the base period, no quality adjustment is needed.

The index point figure for the whole country is derived by aggregating the index class-specific price changes and the quality adjustments with the so-called log-Laspeyres index formula. The weights for old dwellings are derived as value-shares of the stock of dwellings in housing companies in 2010. The weights of new dwellings are the consumption expenditure weights of the dwellings purchased in 2008 to 2012. The data of five years surrounding the base year are utilised in the calculation of the weights of new dwellings because the number and sizes of purchased new dwellings vary much by year and region.

A more detailed methodological description has been published in Statistics Finland's Studies series (Koev, Eugen: Combining classification and quality adjustment in constructing a House Price Index. Helsinki, Statistics Finland, Studies series (2013)).

3. Correctness and accuracy of the data

3.1. Reliability of the statistics

The statistics on the prices of old dwellings are based on the Tax Administration's asset transfer tax data, which cover the transactions of all dwellings whose tenure is based on ownership of housing company shares. All transactions of old housing company dwellings are not included immediately in the statistics, because the purchaser is allowed two months to pay the asset transfer tax. Many purchasers pay the tax faster than this and in transactions intermediated by real estate agents the tax is paid at the time of transaction.

The statistics on the prices of new dwellings are based on data obtained from the largest real estate agents and building contractors and the data are final when first published.

The statistics describe the housing company share market by area relatively reliably. However, the number of included transactions should be taken into consideration. If few transactions have been made, a couple of deviating cases may affect the average price for an area significantly. Therefore, the development of prices should always be examined in the longer term and not only for a certain time period.

3.2. Accuracy of the statistics

Cases with missing information about transaction prices or floor area, or with exceptionally high or low price due to contract within family or error in data entry are not accepted into the statistics. The acceptable ranges of prices per square metre by area are defined yearly for old and new dwellings.

[The price data become revised](http://tilastokeskus.fi/til/ashi/rev_en.html) (http://tilastokeskus.fi/til/ashi/rev_en.html) over the year so that the final data for the year are published in the release concerning the first quarter of the following year. On the average, the revision in monthly statistics on prices of dwellings amounts to 0.3 per cent either way for the whole country. The revision is larger for smaller geographical areas. The average revision in quarterly statistics amounts to 0.2 per cent either way for the whole country.

3.3. Use of the parameters of the statistics

Because the price index takes into account changes in the distribution of year of completion, floor area and location of dwellings sold at different points in time, and their effects on prices, the average prices of the statistics vary differently from the price index. The price index and the average price are each useful measures for different situations.

The *price index* endeavours to measure as accurately as possible how much more/less an average dwelling in a housing company costs now than it did before. The *average price*, in turn, describes the prevailing price level for sold dwellings without considering whether they are older, newer, larger or smaller than dwellings sold before.

4. Timeliness and promptness of published data

4.1. Publication frequency and measurement period of the statistics

The statistics on prices of dwellings in housing companies are published monthly, quarterly and annually. Monthly data are released one month from the end of the statistical reference month and quarterly data are released simultaneously with the data for the last month of each quarter. Quarterly data are statistically more reliable than monthly data and contain more detailed information by area. The annual statistics are published in connection with the statistical release for the first quarter of the year following it. The annual statistics are published in connection with the statistical release for the first quarter of the year following it.

4.2. Preliminariness of the statistics

When the statistics are published they cover approximately two-thirds of all transactions made in the latest quarter. The latest monthly statistics contain around two-fifths of all transactions. Statistics Finland receives the data on the remainder as they arrive at the Tax Administration.

Monthly and quarterly data are updated retrospectively in connection with each release so that the final data for the statistical year are published with the data for the first quarter of the year following it.

5. Accessibility and transparency of the data

A latest statistical release will be published from the statistics on Statistics Finland's web pages on the publication date of the statistics on prices of dwellings. Data concerning dwelling prices can also be found on Statistics Finland's web pages and database service. The essential metadata have been described in this document, which is incorporated into the publication of statistics on dwelling prices in housing companies. This document is also available on Statistics Finland's web pages.

These statistics cover only dwelling transactions in housing company shares. Especially out of the Greater Helsinki area, there are numerous real estate transactions that are not included in these statistics. Statistics Finland publishes a separate price index on real estate prices. Data on real estate transaction prices by municipality are available from the National Board of Survey.

6. Comparability of the statistics

6.1. Comparability with other data

When these statistics are compared with data from other producers the source of the basic data should be considered. Statistics Finland's data derive from the Tax Administration's comprehensive files, and thus cover exhaustively all completed transactions.

6.2. Comparability over time

Data compiled from the Tax Administration's asset transfer tax data are available on prices of old dwellings in housing companies quarterly starting from the year 1987. Older data are available going back to 1970. Data provided by real estate agents are available for the period 1970 to 1986 and the used classification is much less detailed. As regards new dwellings, the time series based on data provided by real estate agents have been calculated quarterly from 2005 onwards.

In January 2013, combinations of register data were updated. This increases the number of transactions by around three to five per cent on the annual level compared with earlier years.

From the beginning of 2015, the quality adjustment models and the weights used in the index calculation of both old and new dwellings in housing companies were updated. In terms of the calculation of old dwellings in housing companies, the procedure for checking prices was also updated. The monthly indices of old dwellings in housing companies, as well as the quarterly and annual indices of old and new dwellings in housing companies, have been backcasted from the year 2010 taking these changes into account. Due to the changes, the backcasted indices can to some extent differ from previously published indices. Most differences are generated in regions where the number of observations is low. For the whole country, the differences are small.

7. Coherence and consistency

In addition to the statistics on prices of dwellings in housing companies, Statistics Finland releases quarterly statistics on real estate prices. Besides the data published by Statistics Finland, real estate agents, credit institutions and banks also publish information concerning dwelling prices and their development.

Inquiries

Petri Kettunen 029 551 3558

Jaana Hellman 029 551 2661

Director in charge:

Mari Ylä-Jarkko

asuminen.hinnat@stat.fi

www.stat.fi

Source: Prices of dwellings in housing companies, Statistics Finland