

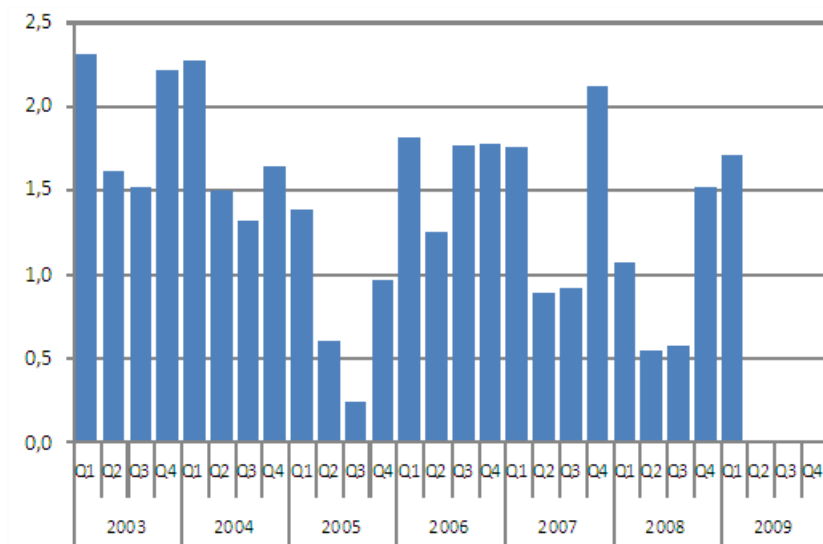
# Consumption of hard coal

## Consumption of hard coal 2009, first quarter

### Consumption of hard coal increased by 60 per cent in the first quarter

Approximately 1.7 million tonnes (42,000 TJ) of hard coal were consumed as fuel in the generation of electricity and heat in the January to March period of 2009. The consumption increased by 60 per cent from the respective period of the previous year and was on level with the average for the 2000s. Use of hard coal went up especially in separate production of electricity. The grown consumption was caused by colder weather in the early part of this year than in the year before, which increased the demand for electricity and district heat. Lowered prices of emission rights made the use of coal in condensing power production more profitable than in the year before. The generation of hydro power decreased by 7 per cent from the previous year in the first quarter.

#### Consumption of Hard Coal, million tonnes



# Contents

## Appendix tables

|  |   |
|--|---|
| Consumption of Hard Coil, 1 000 t.....           | 3 |
| Hard Coal Stocks, month-end, million tonnes..... | 3 |

## Appendix tables

### Consumption of Hard Coil, 1 000 t

| Month       | Year |      |      |      |      |      |      |      |      |      |
|-------------|------|------|------|------|------|------|------|------|------|------|
|             | 2000 | 2001 | 2002 | 2003 | 2004 | 2005 | 2006 | 2007 | 2008 | 2009 |
| January     | 610  | 490  | 580  | 820  | 890  | 380  | 550  | 560  | 410  | 600  |
| February    | 450  | 600  | 440  | 750  | 720  | 430  | 590  | 680  | 330  | 610  |
| March       | 390  | 640  | 420  | 730  | 660  | 570  | 660  | 510  | 330  | 490  |
| April       | 250  | 430  | 320  | 660  | 550  | 280  | 420  | 340  | 230  | ..   |
| May         | 290  | 340  | 190  | 570  | 490  | 230  | 370  | 240  | 150  | ..   |
| June        | 100  | 260  | 130  | 380  | 460  | 90   | 450  | 300  | 170  | ..   |
| July        | 80   | 190  | 210  | 380  | 410  | 50   | 500  | 110  | 10   | ..   |
| August      | 220  | 210  | 270  | 490  | 480  | 90   | 580  | 300  | 200  | ..   |
| September   | 270  | 230  | 450  | 650  | 430  | 90   | 680  | 500  | 370  | ..   |
| October     | 380  | 330  | 760  | 700  | 530  | 210  | 660  | 640  | 430  | ..   |
| November    | 400  | 420  | 770  | 700  | 630  | 300  | 660  | 750  | 520  | ..   |
| December    | 470  | 570  | 800  | 800  | 480  | 460  | 450  | 720  | 570  | ..   |
| 1st Quarter | 1450 | 1730 | 1440 | 2300 | 2270 | 1390 | 1810 | 1750 | 1060 | 1700 |
| Whole year  | 3910 | 4710 | 5360 | 7640 | 6720 | 3200 | 6590 | 5660 | 3710 | ..   |

### Hard Coal Stocks, month-end, million tonnes

| Month     | Year |      |      |      |
|-----------|------|------|------|------|
|           | 2006 | 2007 | 2008 | 2009 |
| January   | 5,0  | 4,4  | 3,6  | 4,2  |
| February  | 4,6  | 4,1  | 3,6  | 4,1  |
| March     | 4,1  | 4,2  | 3,7  | 4,0  |
| April     | 3,9  | 4,4  | 3,7  | ..   |
| May       | 3,8  | 4,8  | 3,9  | ..   |
| June      | 3,7  | 4,8  | 4,0  | ..   |
| July      | 3,4  | 4,9  | 4,1  | ..   |
| August    | 3,2  | 5,0  | 4,3  | ..   |
| September | 3,3  | 4,7  | 4,1  | ..   |
| October   | 3,5  | 4,5  | 3,9  | ..   |
| November  | 3,8  | 4,1  | 4,1  | ..   |
| December  | 4,4  | 3,7  | 4,4  | ..   |

---

Suomen virallinen tilasto  
Finlands officiella statistik  
Official Statistics of Finland

2009

*Inquiries*

Anssi Vuorio                      09 1734 2685  
Director in charge:  
Leena Storgårds

[energia@tilastokeskus.fi](mailto:energia@tilastokeskus.fi)

[www.stat.fi](http://www.stat.fi)