

# Consumption of hard coal

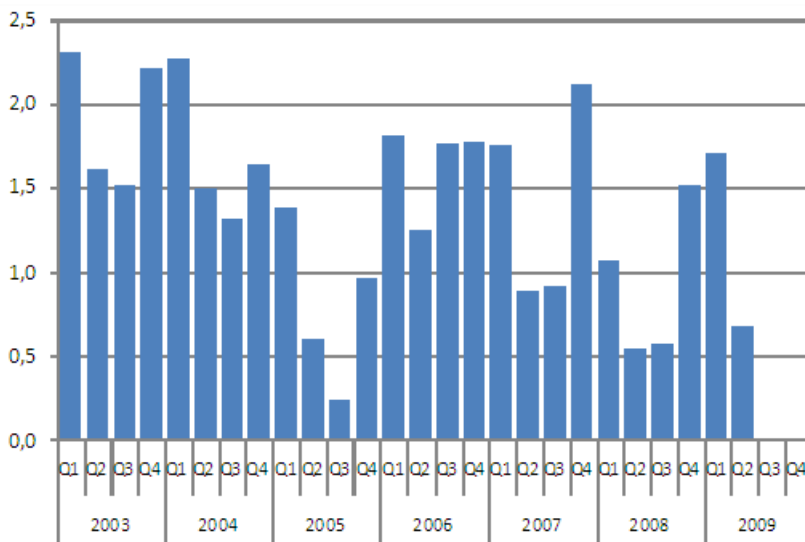
2009, second quarter

## Consumption of hard coal increased by 48 per cent in January to June

Approximately 2.4 million tonnes (60,000 TJ) of hard coal was consumed as fuel in the generation of electricity and heat in the first half of 2009. The consumption increased by 48 per cent from the respective period of the year before. Despite this large increase, consumption in the early part of the year was 10 per cent below the average for the 2000s. In the second quarter of the year the consumption totalled 0.7 million tonnes (17,000 TJ). The growth from the second quarter of 2008 amounted to 24 per cent.

Use of hard coal went up especially in separate production of electricity. The grown consumption was caused by colder weather in the early part of this year than in the year before, which increased the demand for electricity and district heat. Throughout the early part of the year, prices of emission rights stayed well below the previous year's level. The generation of hydro power decreased by 16 per cent from the previous year due to depleted water supply in the Nordic countries.

### Consumption of Hard Coal, million tonnes



# Contents

## Appendix tables

Consumption of Hard Coal, 1000t.....	3
Hard Coal Stocks, month-end, million tonnes.....	3

## Appendix tables

### Consumption of Hard Coal, 1000t

Month	Year									
	2000	2001	2002	2003	2004	2005	2006	2007	2008	2009
January	610	490	580	820	890	380	550	560	410	600
February	450	600	440	750	720	430	590	680	330	610
March	390	640	420	730	660	570	660	510	330	500
April	250	430	320	660	550	280	420	340	230	290
May	290	340	190	570	490	230	370	240	150	210
June	100	260	130	380	460	90	450	300	170	180
July	80	190	210	380	410	50	500	110	10	..
August	220	210	270	490	480	90	580	300	200	..
September	270	230	450	650	430	90	680	500	370	..
October	380	330	760	700	530	210	660	640	430	..
November	400	420	770	700	630	300	660	750	520	..
December	470	570	800	800	480	460	450	720	570	..
1st-2nd Quarter	2 090	2 770	2 090	3 920	3 770	1 990	3 050	2 630	1 610	2 390
Whole year	3 910	4 710	5 360	7 640	6 720	3 200	6 590	5 660	3 710	..

### Hard Coal Stocks, month-end, million tonnes

Month	Year			
	2006	2007	2008	2009
January	5,0	4,4	3,6	4,2
February	4,6	4,1	3,6	4,1
March	4,1	4,2	3,7	4,0
April	3,9	4,4	3,7	4,1
May	3,8	4,8	3,9	4,5
June	3,7	4,8	4,0	4,8
July	3,4	4,9	4,1	..
August	3,2	5,0	4,3	..
September	3,3	4,7	4,1	..
October	3,5	4,5	3,9	..
November	3,8	4,1	4,1	..
December	4,4	3,7	4,4	..

---

Suomen virallinen tilasto  
Finlands officiella statistik  
Official Statistics of Finland

*Energy 2009*

*Inquiries*

Anssi Vuorio                      09 1734 2685  
Director in charge:  
Leena Storgårds

[energia@tilastokeskus.fi](mailto:energia@tilastokeskus.fi)

[www.stat.fi](http://www.stat.fi)