

Consumption of hard coal

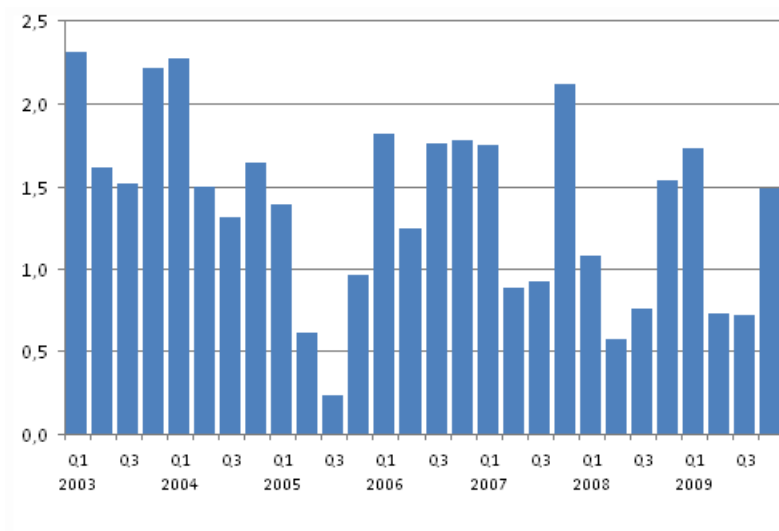
2009, fourth quarter

Consumption of hard coal increased by 18 per cent in 2009

A total of 4.7 million tonnes (116,000 TJ) of hard coal were consumed as fuel in the generation of electricity and heat in 2009. The consumption increased by 18 per cent from the previous year. Despite the increase consumption was 12 per cent below the average for the 2000s. In the fourth quarter of the year, consumption amounted to 1.5 million tonnes, which was three per cent less than one year earlier. Use of hard coal went up especially in separate production of electricity. Consumption was pushed up due to a decrease in the production of hydro power from its record level of the year before.

In 2009 due to the economic downturn electricity consumption diminished by 16 per cent in industry. All in all consumption of electricity went down by seven per cent. At the same time production of hydro power decreased by 26 per cent. The diminished supply of hydro power was partly offset with condensing power produced with hard coal. The prices of both hard coal and emission rights remained markedly lower than one year ago. The first and last parts of the year were colder than the corresponding periods of the previous year, which increased the need for heating.

Consumption of Hard Coal, million tonnes



Contents

Appendix tables

Consumption of Hard Coal, 1000t.....	3
Hard Coal Stocks, month-end, million tonnes.....	3

Appendix tables

Consumption of Hard Coal, 1000t

Month	Year									
	2000	2001	2002	2003	2004	2005	2006	2007	2008	2009
January	610	490	580	820	890	380	550	560	410	610
February	450	600	440	750	720	430	590	680	330	610
March	390	640	420	730	660	570	660	510	330	500
April	250	430	320	660	550	280	420	340	230	310
May	290	340	190	570	490	230	370	240	160	230
June	100	260	130	380	460	90	450	300	180	190
July	80	190	210	380	410	50	500	110	180	180
August	220	210	270	490	480	90	580	300	200	240
September	270	230	450	650	430	90	680	500	380	300
October	380	330	760	700	530	210	660	640	440	360
November	400	420	770	700	630	300	660	750	530	470
December	470	570	800	800	480	460	450	720	570	650
Whole year	3910	4710	5360	7640	6720	3200	6590	5660	3940	4650

Hard Coal Stocks, month-end, million tonnes

Month	Year			
	2006	2007	2008	2009
January	5,0	4,4	3,6	4,2
February	4,6	4,1	3,6	4,1
March	4,1	4,2	3,7	4,0
April	3,9	4,4	3,7	4,2
May	3,8	4,8	3,9	4,5
June	3,7	4,8	4,0	4,9
July	3,4	4,9	4,1	5,2
August	3,2	5,0	4,3	5,5
September	3,3	4,7	4,1	5,5
October	3,5	4,5	3,9	5,4
November	3,8	4,1	4,1	5,2
December	4,4	3,7	4,4	4,8

Suomen virallinen tilasto
Finlands officiella statistik
Official Statistics of Finland

Energy 2010

Inquiries

Anssi Vuorio 09 1734 2685
Director in charge:
Leena Storgårds

energia@stat.fi

www.stat.fi