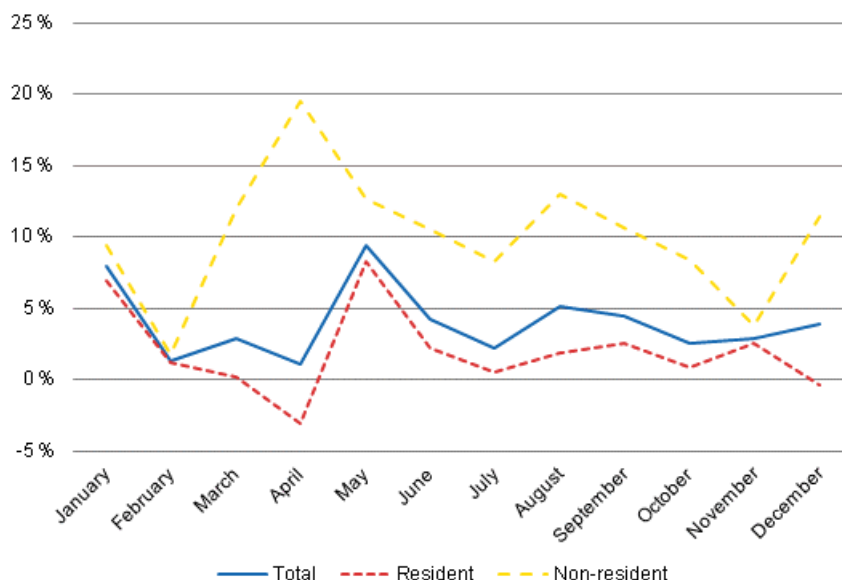


# Accommodation statistics 2011

## Foreign demand for accommodation services grew by ten per cent in 2011

In 2011, the demand for accommodation services grew by four per cent from the previous year. The number of overnight stays exceeded the level prior to the economic downturn of 2009. In deviation from the year before the engine behind the growth was increased foreign demand. Overnight stays by foreign tourists increased by 10 per cent at the same time as the growth in overnight stays by domestic tourists remained at moderate two per cent. In 2011, accommodation establishments in Finland recorded a total of 20.0 million overnight stays, of which domestic tourists accounted for 14.5 million and foreign tourists for the remaining 5.5 million.

### Year-on-year changes in nights spent (%) by month 2011–2010

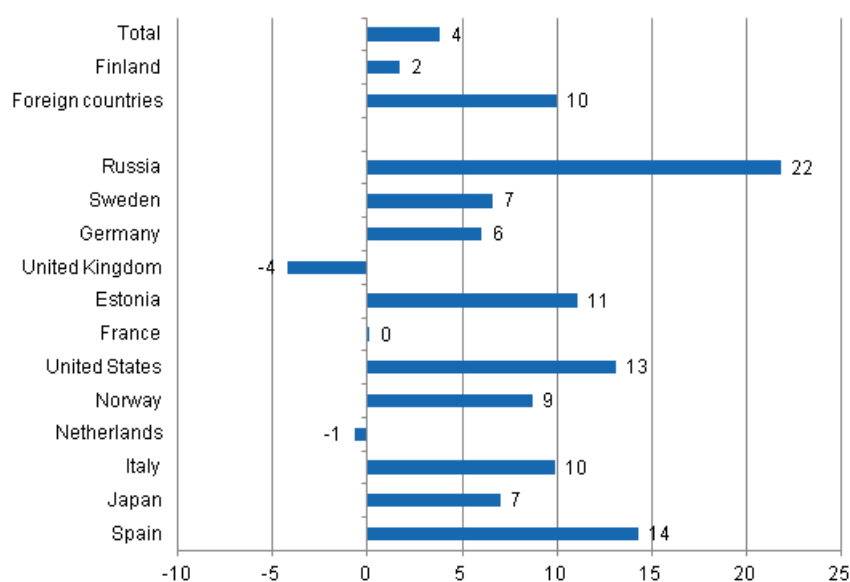


## *Nights spent by Russian visitors in strong growth*

Nights spent at accommodation establishments by visitors from nearly all the most important countries of inbound tourism into Finland increased in 2011. The strongest growth was seen in overnight stays by Russian visitors as accommodation establishment recorded over one million of them, which is 22 per cent more than in the year before. Russian visitors accounted for good 23 per cent of all overnight stays by foreign visitors. Nights spent by Spanish visitors increased by 14 per cent from the previous year, and those by visitors from Estonia, Denmark, Norway, Italy and Switzerland by between 9 and 11 per cent. Overnight stays of visitors from the USA increased by 13 per cent from the previous year. Nights spent by British visitors continued the declining trend that started in 2009, and now decreased by four per cent from the previous year.

Overnight stays of visitors from EU countries grew by five per cent in all. The growth of 13 per cent in nights spent by visitors from Asia was also noteworthy. Overnight stays recorded for Japanese visitors increased by seven per cent and those for Chinese visitors by as much as 19 per cent from the previous year.

### **Change in overnight stays 2011 / 2010, %**

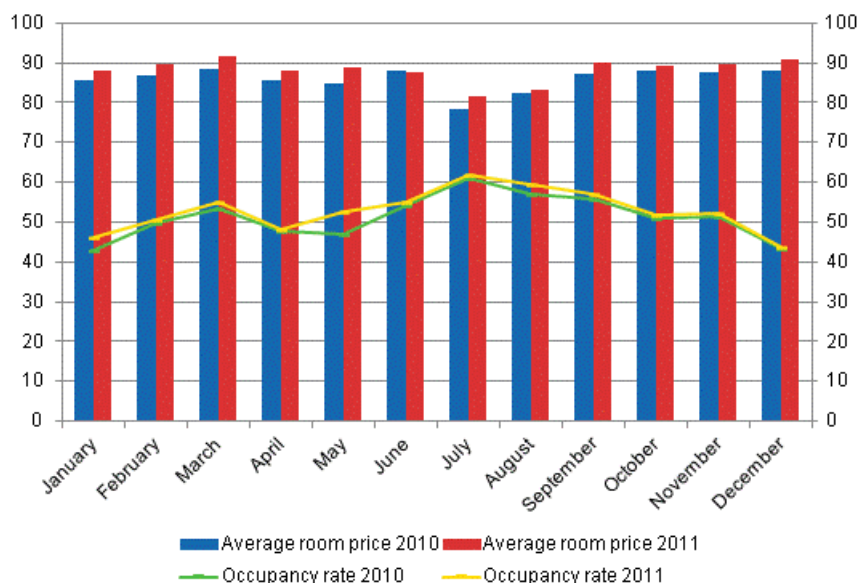


## *Overnight stays at hotels numbered 16 million*

Overnight stays at hotels increased by four per cent from the previous year. Hotels recorded 4.6 million overnight stays, or 10 per cent more than in the year before, for foreign tourists. The total number of overnight stays recorded for domestic tourists was 11.3 million, which is two per cent up on the year before.

Hotel room occupancy rate improved by 1.6 percentage points from the pre-vious year and reached 52.9 per cent in 2011. At the same time, the average hotel room price started to go up again after a break of three years. The average price of a hotel room was EUR 88, having been under EUR 86 in the year before.

### Hotel room occupancy rate and the monthly average price



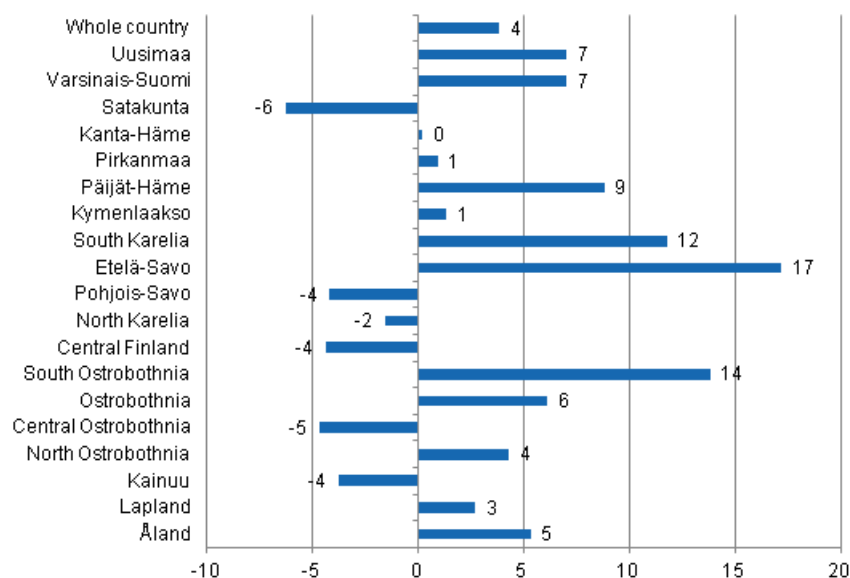
### Regional variations in concentration of overnight stays

Over 10 per cent growth in overnight stays was achieved in the regions of Etelä-Savo, South Karelia and South Ostrobothnia in 2011. In absolute numbers, overnight stays increased most in Uusimaa where they totalled 0.3 million more than one year earlier. Overnight stays decreases by between four to six per cent in the regions of Satakunta, Pohjois-Savo, Central Finland, Central Ostrobothnia and Kainuu.

Foreign visitors accounted for nearly one-half of all nights spent in South Karelia, and for 45 per cent in Uusimaa, 38 per cent in Lapland and 28 per cent in Kymenlaakso. In other regions of Finnish mainland, one night in five at most was spent by a foreign visitor.

Among the large towns, the growth in nights spent ranged from five to eight per cent in Helsinki, Turku and Vantaa. In Espoo, overnight stays went up by 29 per cent from the previous year thanks to grown accommodation capacity.

### Change in overnight stays by region 2011/2010,%



## Receipts grew more strongly than expenditure in tourism

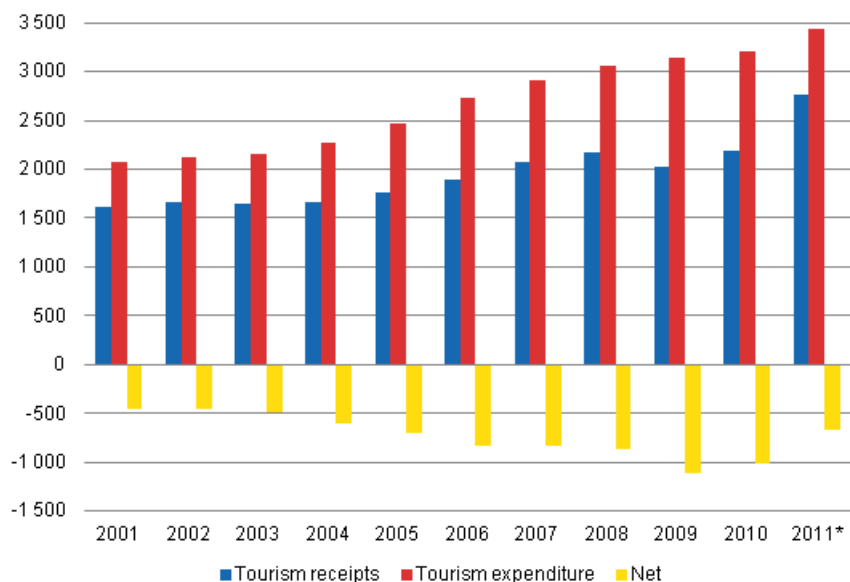
The travel account calculated as the difference between tourism receipts and tourism expenditure was EUR 665 million in deficit in 2011. However, the deficit contracted by 34 per cent from the previous year as receipts grew faster than expenditure.

In 2011, the total amount foreign tourists spent on goods and services in Finland was EUR 2.8 billion, which was 26 per cent more than in the previous year. The share of Russian visitors of the tourism receipts was 41 per cent, having been 31 per cent one year earlier. The share of EU countries was 43 per cent and that of other countries 15 per cent.

In 2011, Finnish tourists spent abroad a total of EUR 3.4 billion on services and purchases, which is seven per cent more than one year earlier.

Finnish visitors spent EUR 0.5 billion in Estonia, EUR 0.4 billion in Spain and EUR 0.3 billion in Sweden. In other EU countries Finnish visitors spent a total of EUR 1.3 billion and in countries outside the EU a total of EUR 0.9 billion.

### Balance of payments, travel 2001 - 2011



# Contents

## Tables

### Appendix tables

Appendix table 1. Capacity and its utilization, 2011.....	6
Appendix table 2. Nights spend in all establishments, 2011.....	7
Appendix table 3. Hotel capacity and capacity utilization, 2011.....	8
Appendix table 4. Nights spend in hotels, 2011.....	9
Appendix table 5. Visitor arrivals and nights spend by country of residence, 2011.....	10
Appendix table 6. Nights spend in all establishments, 2011.....	10
Appendix table 7. Nights spent by non-residents and annual change, 2011 (%).....	11
Appendix table 8. Capacity and its utilization by type of accommodation establishments, 2011.....	12
Appendix table 8.1 Capacity and its utilization by type of accommodation establishments, May-September 2011.....	12
Appendix table 9. Balance of payments, travel 2001 - 2011.....	13

# Appendix tables

**Appendix table 1. Capacity and its utilization, 2011**

Region / municipality	Number of establishments	Number of bedrooms	Occupancy rate of bedrooms %	Change of the occupancy rate compared to previous year, %-units	Average price of nights spend, in euros (incl. VAT 9 %)
Whole country	1 064	58 108	49,7	1,3	48,06
Mainland Finland	1 016	56 924	50,0	1,3	48,16
Uusimaa	138	14 410	63,7	1,7	61,77
Helsinki	59	8 529	69,5	2,3	64,30
Varsinais-Suomi	66	3 729	51,7	2,0	45,34
Turku	23	2 136	58,8	1,4	47,10
Satakunta	37	1 481	42,9	-1,1	46,06
Pori	10	700	46,5	-4,3	41,44
Kanta-Häme	28	1 413	40,5	-0,4	47,65
Hämeenlinna	12	799	43,5	0,1	52,14
Pirkanmaa	68	4 037	54,3	1,0	47,43
Tampere	25	2 473	63,0	0,6	53,69
Päijät-Häme	30	1 954	43,1	4,0	44,86
Lahti	10	746	47,7	6,6	53,02
Kymenlaakso	22	1 130	41,1	0,2	44,54
Kouvola	10	561	39,6	-2,4	37,97
South Karelia	30	1 497	54,6	4,6	47,36
Lappeenranta	10	644	63,0	3,4	47,77
Etelä-Savo	61	2 221	40,3	2,3	37,38
Mikkeli	8	566	52,1	1,5	47,09
Pohjois-Savo	46	2 491	50,5	-0,3	42,70
Kuopio	14	1 053	61,9	-1,9	47,11
North Karelia	46	1 696	38,0	-0,5	40,10
Joensuu	12	784	46,2	-1,0	49,83
Central Finland	54	3 033	46,3	-0,9	40,23
Jyväskylä	14	1 370	57,2	0,3	56,13
South Ostrobothnia	39	1 709	46,3	3,1	38,08
Seinäjoki	9	574	56,1	3,0	53,57
Ostrobothnia	32	1 432	45,4	4,5	45,23
Vaasa	10	873	52,0	6,6	50,24
Central Ostrobothnia	18	593	43,6	0,2	47,62
Kokkola	9	414	51,6	2,8	52,67
North Ostrobothnia	90	4 264	45,2	1,7	38,76
Oulu	11	1 490	62,2	2,9	51,76
Kainuu	43	2 099	44,8	-1,3	33,93
Kajaani	9	498	33,5	-1,4	46,66
Lapland	169	7 738	39,2	0,4	41,53
Rovaniemi	18	1 382	50,1	0,7	42,49
Åland	48	1 184	36,7	2,7	.
Mariehamn	11	573	45,8	-0,2	.

**Appendix table 2. Nights spend in all establishments, 2011**

Region / municipality	Nights spend, total	Change of nights spend, total, %	Nights spend, residents	Change of nights spend, residents, %	Nights spend, non-residents	Change of nights spend, non-residents, %
Whole country	19 987 871	3,8	14 480 403	1,7	5 507 468	10,0
Mainland Finland	19 561 046	3,8	14 314 169	1,7	5 246 877	10,0
Uusimaa	5 194 606	7,0	2 842 319	5,2	2 352 287	9,2
Helsinki	3 363 971	5,5	1 542 952	4,4	1 821 019	6,5
Varsinais-Suomi	1 308 393	7,0	1 073 262	7,2	235 131	6,0
Turku	805 752	6,2	644 262	7,5	161 490	1,1
Satakunta	429 269	-6,3	361 849	-7,0	67 420	-2,3
Pori	227 741	-14,3	201 923	-13,6	25 818	-19,3
Kanta-Häme	394 328	0,2	350 899	0,1	43 429	1,5
Hämeenlinna	228 598	-0,2	201 037	-0,1	27 561	-0,9
Pirkanmaa	1 514 697	0,9	1 282 577	-0,5	232 120	9,4
Tampere	954 116	1,2	779 602	0,5	174 514	4,3
Päijät-Häme	611 483	8,8	520 262	7,8	91 221	15,1
Lahti	202 826	11,0	149 762	11,8	53 064	8,8
Kymenlaakso	333 847	1,3	240 979	-8,1	92 868	37,8
Kouvola	157 240	-4,1	131 532	-7,4	25 708	17,0
South Karelia	565 458	11,8	295 362	4,6	270 096	21,1
Lappeenranta	252 579	12,6	162 479	9,1	90 100	19,5
Etelä-Savo	697 414	17,2	555 708	16,3	141 706	21,0
Mikkeli	203 163	6,1	164 664	2,8	38 499	22,9
Pohjois-Savo	876 847	-4,2	760 343	-5,8	116 504	8,1
Kuopio	428 065	-7,4	375 133	-8,0	52 932	-2,8
North Karelia	461 059	-1,6	393 195	-3,2	67 864	8,8
Joensuu	205 316	0,8	170 962	-0,6	34 354	8,3
Central Finland	1 101 956	-4,4	929 782	-5,0	172 174	-0,9
Jyväskylä	444 039	-0,9	367 171	-2,0	76 868	5,0
South Ostrobothnia	690 094	13,8	658 947	12,7	31 147	45,1
Seinäjoki	232 639	16,9	218 682	16,8	13 957	18,6
Ostrobothnia	422 110	6,1	344 526	3,8	77 584	17,8
Vaasa	276 572	2,0	217 438	-2,3	59 134	21,5
Central Ostrobothnia	171 444	-4,7	158 496	-2,3	12 948	-27,2
Kokkola	123 139	3,1	112 663	7,3	10 476	-27,2
North Ostrobothnia	1 578 303	4,3	1 315 545	2,7	262 758	12,8
Oulu	585 656	2,9	466 069	1,1	119 587	10,8
Kainuu	922 850	-3,8	820 014	-5,6	102 836	13,0
Kajaani	91 559	-5,4	82 150	-6,6	9 409	6,7
Lapland	2 286 888	2,7	1 410 104	-0,4	876 784	8,3
Rovaniemi	492 424	5,2	221 501	-1,2	270 923	11,1
Åland	426 825	5,3	166 234	-2,4	260 591	10,9
Mariehamn	193 089	2,2	96 179	-3,8	96 910	8,9

**Appendix table 3. Hotel capacity and capacity utilization, 2011**

Region / municipality	Number of establishments	Number of bedrooms	Occupancy rate of bedrooms %	Change of the occupancy rate compared to previous year, %-units	Room price, euros (Vat inc. 9 %)	<sup>1)</sup> RevPAR, euros (Vat inc. 9 %)
Whole country	626	49 595	52,9	1,6	87,96	46,51
Mainland Finland	612	48 893	53,0	1,6	87,91	46,62
Uusimaa	112	13 923	64,4	2,1	95,86	61,78
Helsinki	52	8 354	69,9	2,6	98,94	69,14
Varsinais-Suomi	38	3 113	55,3	2,6	83,49	46,18
Turku	19	2 037	59,4	1,5	84,88	50,44
Satakunta	24	1 174	47,7	-1,2	83,26	39,68
Pori	7	599	48,8	-4,8	81,62	39,83
Kanta-Häme	17	1 210	43,2	0,1	86,74	37,50
Hämeenlinna	8	725	45,5	0,6	93,95	42,79
Pirkanmaa	41	3 324	57,0	0,9	88,50	50,49
Tampere	21	2 266	62,9	0,3	90,95	57,16
Päijät-Häme	17	1 776	44,7	4,3	78,97	35,26
Lahti	8	718	47,8	6,7	81,00	38,68
Kymenlaakso	15	941	43,5	0,0	80,74	35,11
Kouvola	6	432	43,4	-2,9	75,88	32,94
South Karelia	18	1 260	59,7	5,3	91,59	54,72
Lappeenranta	6	557	68,6	3,8	83,52	57,26
Etelä-Savo	31	1 689	44,0	2,3	76,89	33,86
Mikkeli	6	503	53,9	1,5	81,17	43,72
Pohjois-Savo	28	2 188	52,8	-0,0	81,96	43,25
Kuopio	8	937	63,7	-1,8	86,19	54,87
North Karelia	24	1 375	41,7	-0,9	78,15	32,61
Joensuu	10	768	46,6	-1,2	77,22	35,95
Central Finland	29	2 580	49,7	-0,8	86,19	42,83
Jyväskylä	10	1 259	60,2	0,6	88,89	53,49
South Ostrobothnia	22	1 405	51,8	3,4	76,64	39,69
Seinäjoki	8	569	56,2	3,1	78,51	44,15
Ostrobothnia	23	1 280	48,3	5,6	80,91	39,04
Vaasa	10	863	52,0	6,6	83,97	43,68
Central Ostrobothnia	10	504	46,6	-0,0	79,42	36,99
Kokkola	5	365	53,9	1,2	83,86	45,21
North Ostrobothnia	49	3 333	47,9	1,9	81,96	39,29
Oulu	10	1 422	62,8	3,0	82,44	51,80
Kainuu	21	1 645	49,4	-1,0	73,82	36,49
Kajaani	7	451	36,3	-1,3	72,57	26,34
Lapland	95	6 173	41,1	1,0	86,00	35,35
Rovaniemi	12	1 244	51,0	0,9	80,91	41,29
Åland	14	701	42,1	-0,4	.	.
Mariehamn	7	469	49,1	0,7	.	.

1) RevPar = Average revenue per available room, equivalent to the accommodation revenue of an establishment divided by the available room capacity.



**Appendix table 4. Nights spend in hotels, 2011**

Region / municipality	Nights spend, total	Change of nights spend, total, %	Nights spend, residents	Change of nights spend, residents, %	Nights spend, non-residents	Change of nights spend, non-residents, %
Whole country	15 944 255	4,2	11 314 418	2,0	4 629 837	10,2
Mainland Finland	15 744 688	4,2	11 224 001	2,1	4 520 687	10,1
Uusimaa	4 866 070	7,5	2 631 847	5,6	2 234 223	9,8
Helsinki	3 182 522	6,2	1 455 280	4,7	1 727 242	7,6
Varsinais-Suomi	1 050 939	6,5	857 338	7,1	193 601	4,2
Turku	733 696	6,0	594 165	7,5	139 531	0,2
Satakunta	283 827	-0,6	224 078	0,4	59 749	-4,0
Pori	150 754	-5,0	127 475	-1,0	23 279	-22,1
Kanta-Häme	321 292	0,1	282 793	-0,5	38 499	4,7
Hämeenlinna	198 739	-1,9	172 213	-2,3	26 526	0,7
Pirkanmaa	1 167 848	-0,7	991 800	-1,5	176 048	4,1
Tampere	837 094	0,2	689 135	-0,1	147 959	1,3
Päijät-Häme	505 972	10,7	428 108	9,5	77 864	18,0
Lahti	188 044	11,0	140 156	12,3	47 888	7,3
Kymenlaakso	227 367	0,8	158 040	-9,8	69 327	37,3
Kouvola	104 061	-4,7	85 006	-8,7	19 055	18,5
South Karelia	502 975	14,4	251 025	6,9	251 950	23,0
Lappeenranta	229 434	14,4	145 657	9,6	83 777	23,9
Etelä-Savo	458 809	20,7	381 746	20,4	77 063	22,2
Mikkeli	163 919	7,4	132 247	5,6	31 672	15,5
Pohjois-Savo	735 359	-4,6	647 150	-6,1	88 209	7,5
Kuopio	352 858	-5,1	310 558	-5,4	42 300	-2,7
North Karelia	353 705	-1,7	303 170	-2,6	50 535	3,9
Joensuu	193 997	1,8	161 278	0,4	32 719	9,3
Central Finland	928 660	-6,2	776 479	-7,1	152 181	-1,5
Jyväskylä	421 260	-4,5	348 326	-5,4	72 934	-0,1
South Ostrobothnia	494 991	15,7	472 954	15,4	22 037	23,8
Seinäjoki	168 813	17,6	155 258	17,5	13 555	18,5
Ostrobothnia	334 356	2,5	266 297	-1,0	68 059	18,7
Vaasa	251 025	1,9	195 625	-2,7	55 400	22,1
Central Ostrobothnia	124 712	-3,0	114 814	0,1	9 898	-28,3
Kokkola	99 796	-0,0	92 022	4,3	7 774	-32,9
North Ostrobothnia	1 016 912	4,3	839 060	2,9	177 852	11,4
Oulu	511 221	3,6	419 547	1,9	91 674	12,1
Kainuu	689 530	-3,4	615 520	-4,8	74 010	10,1
Kajaani	88 648	-5,0	79 427	-6,4	9 221	8,4
Lapland	1 681 364	4,3	981 782	0,1	699 582	10,9
Rovaniemi	415 170	6,0	181 931	-2,2	233 239	13,4
Åland	199 567	3,0	90 417	-6,9	109 150	13,1
Mariehamn	146 892	4,5	74 985	-3,2	71 907	14,0

**Appendix table 5. Visitor arrivals and nights spend by country of residence, 2011**

Country of residence	Visitor arrivals in all accommodation establishments	Nights spend in all accommodation establishments	Change of nights spend in all accommodation establishments, %	Nights spend in hotels	Change of nights spend in hotels, %
Total	10 726 568	19 987 871	3,8	15 944 255	4,2
Finland	8 103 982	14 480 403	1,7	11 314 418	2,0
Foreign countries	2 622 586	5 507 468	10,0	4 629 837	10,2
Sweden	307 045	552 129	6,6	410 385	6,2
Germany	270 897	541 031	6,0	446 922	7,2
Russia	630 064	1 286 598	21,8	1 093 456	22,5
United Kingdom	154 811	389 037	-4,2	341 715	-4,9
United States	89 728	201 854	13,1	194 754	14,4
Norway	87 851	173 254	8,7	129 438	9,7
Netherlands	71 922	164 593	-0,7	129 579	1,0
Italy	72 412	156 509	9,9	136 708	10,1
France	83 460	213 588	0,1	185 095	1,2
Japan	75 680	146 433	7,0	140 872	7,0
Estonia	91 814	228 187	11,1	152 307	9,5
Spain	58 320	130 046	14,3	114 647	15,5

**Appendix table 6. Nights spend in all establishments, 2011**

Month	Nights spend, total	Change of nights spend, total, %	Nights spend, residents	Change of nights spend, residents, %	Nights spend, non-residents	Change of nights spend, non-residents, %
Total	19 987 871	3,8	14 480 403	1,7	5 507 468	10,0
January	1 315 529	7,9	777 815	6,9	537 714	9,4
February	1 342 464	1,4	991 878	1,2	350 586	1,7
March	1 674 005	2,9	1 254 754	0,2	419 251	12,0
April	1 397 696	1,1	1 094 741	-3,0	302 955	19,5
May	1 329 447	9,4	966 275	8,3	363 172	12,6
June	2 030 221	4,3	1 505 233	2,2	524 988	10,5
July	3 136 744	2,3	2 394 358	0,5	742 386	8,3
August	2 201 610	5,2	1 489 680	1,8	711 930	12,9
September	1 570 153	4,5	1 170 365	2,6	399 788	10,6
October	1 398 382	2,5	1 084 672	0,9	313 710	8,4
November	1 284 936	2,9	946 710	2,5	338 226	3,8
December	1 306 684	3,9	803 922	-0,3	502 762	11,5

**Appendix table 7. Nights spent by non-residents and annual change, 2011 (%)**

Region / Municipality	Foreign countries, total		Sweden		Germany		Russia		United Kingdom		Estonia	
Whole country	5 507 468	10,0	552 129	6,6	541 031	6,0	1 286 598	21,8	389 037	-4,2	228 187	11,1
Mainland Finland	5 246 877	10,0	346 813	3,8	528 321	6,2	1 281 710	21,8	387 785	-4,2	220 487	11,1
Uusimaa	2 352 287	9,2	176 775	5,4	219 759	11,5	409 649	19,6	171 835	-3,7	91 994	17,6
Helsinki	1 821 019	6,5	132 471	4,0	175 834	12,4	305 754	14,9	140 106	-5,9	49 960	1,0
Varsinais-Suomi	235 131	6,0	45 188	-3,6	22 991	8,4	28 756	10,5	11 788	14,5	14 482	3,7
Turku	161 490	1,1	31 478	-8,8	16 147	9,3	17 726	1,0	9 303	17,0	8 583	2,3
Satakunta	67 420	-2,3	9 290	17,9	18 620	11,1	3 568	20,7	3 626	-58,2	4 240	21,0
Pori	25 818	-19,3	2 891	20,3	5 963	-2,4	1 811	21,4	1 482	-73,6	1 780	38,3
Kanta-Häme	43 429	1,5	3 322	2,3	4 302	-1,4	7 900	-1,9	1 440	-24,9	3 546	2,2
Hämeenlinna	27 561	-0,9	1 885	5,4	2 803	38,9	4 677	-6,2	874	-37,0	1 190	-7,5
Pirkanmaa	232 120	9,4	16 903	2,7	24 118	-2,9	34 416	3,5	13 080	-7,9	15 134	7,2
Tampere	174 514	4,3	14 504	-0,9	18 678	-0,2	18 681	7,3	11 781	-8,5	8 499	5,2
Päijät-Häme	91 221	15,1	5 391	11,5	9 426	21,2	36 813	36,8	2 009	16,3	6 888	-2,9
Lahti	53 064	8,8	4 145	10,7	6 753	18,9	15 060	32,1	1 610	13,9	4 562	-2,5
Kymenlaakso	92 868	37,8	3 122	28,2	5 024	3,2	49 658	29,8	3 389	63,3	4 721	6,3
Kouvola	25 708	17,0	1 219	-7,9	2 029	6,2	15 756	36,1	760	92,9	1 388	-33,8
South Karelia	270 096	21,1	4 300	30,9	5 116	-14,8	229 833	23,6	1 422	-23,9	4 529	43,7
Lappeenranta	90 100	19,5	2 063	3,2	2 681	-17,8	68 000	24,7	858	-28,6	2 204	33,3
Etelä-Savo	141 706	21,0	3 536	-40,1	15 674	-18,6	80 276	31,1	1 403	-5,7	6 109	22,9
Mikkeli	38 499	22,9	1 264	5,3	2 779	-0,7	21 884	20,7	452	-36,2	3 385	78,2
Pohjois-Savo	116 504	8,1	4 457	9,0	10 026	-10,2	54 072	16,0	3 598	24,2	9 235	23,0
Kuopio	52 932	-2,8	2 777	-0,1	6 546	-16,5	18 360	8,8	2 251	4,8	3 038	23,5
North Karelia	67 864	8,8	2 334	-5,2	6 323	-25,2	34 776	28,2	1 120	-22,4	1 744	0,1
Joensuu	34 354	8,3	1 468	3,9	2 784	-42,7	17 441	43,1	692	-35,6	880	4,9
Central Finland	172 174	-0,9	7 648	-12,3	24 196	-7,9	52 931	3,4	8 021	8,9	22 993	-13,2
Jyväskylä	76 868	5,0	5 008	-6,9	14 043	-6,8	11 142	30,9	6 666	15,1	3 230	-3,3
South Ostrobothnia	31 147	45,1	2 784	19,2	2 035	-9,4	3 998	101,3	1 332	49,7	2 892	21,6
Seinäjoki	13 957	18,6	1 591	24,5	1 144	-11,0	658	61,3	1 059	119,3	896	-9,5
Ostrobothnia	77 584	17,8	12 494	13,5	6 615	48,8	3 296	-2,6	2 156	-11,4	5 391	57,7
Vaasa	59 134	21,5	7 693	10,6	4 327	27,9	2 259	-1,0	1 806	-10,6	2 643	88,9
Central Ostrobothnia	12 948	-27,2	1 963	-24,4	2 936	-18,1	1 819	230,1	331	-14,2	1 353	-44,8
Kokkola	10 476	-27,2	1 656	-17,1	2 808	-18,3	499	19,1	249	-33,4	1 130	12,0
North Ostrobothnia	262 758	12,8	18 611	18,9	27 503	14,4	69 778	35,1	11 849	-13,9	8 879	11,0
Oulu	119 587	10,8	12 661	17,7	12 317	14,6	14 370	22,2	4 676	7,8	4 831	5,3
Kainuu	102 836	13,0	2 051	3,4	4 470	-16,5	66 410	14,6	1 800	-9,2	4 353	85,2
Kajaani	9 409	6,7	699	-13,4	870	-14,0	3 845	42,9	186	-4,6	616	79,6
Lapland	876 784	8,3	26 644	-0,4	119 187	8,4	113 761	31,4	147 586	-3,7	12 004	6,9
Rovaniemi	270 923	11,1	7 525	-13,5	37 570	23,8	50 719	34,2	20 053	-8,5	4 058	25,7
Åland	260 591	10,9	205 316	11,8	12 710	0,7	4 888	18,0	1 252	-2,9	7 700	11,2
Mariehamn	96 910	8,9	76 639	7,4	3 058	-19,6	1 615	-6,9	891	14,1	1 198	43,3

**Appendix table 8. Capacity and its utilization by type of accommodation establishments, 2011**

Whole year on average	All Accomodation establishments	Hotels	Similar establishments	Holiday villages	Camping sites	Youth hostels
Number of establishments	1 064	626	123	145	133	37
Number of rooms	58 108	49 595	2 621	3 429	1 911	553
Number of bed-places	140 008	108 098	6 620	15 761	7 695	1 834
Room occupancy rate (%)	49,7	52,9	24,1	34,8	33,8	31,7
Change of room occupancy rate (%) -units	2,8	3,1	-0,4	-2,0	2,6	0,4
Average price of room (eur, incl. VAT 9 %)	87,14	87,96	46,21	87,03	90,93	66,98
Change of average price of room (%)	2,6	2,7	-2,3	1,5	3,8	2,0

**Appendix table 8.1 Capacity and its utilization by type of accommodation establishments, May-September 2011**

May-September	All Accomodation establishments	Hotels	Similar establishments	Holiday villages	Camping sites	Youth hostels
Number of establishments	1 200	637	144	171	203	44
Number of rooms	61 513	50 375	3 239	3 895	3 298	706
Number of bed-places	150 572	109 937	8 011	17 599	12 779	2 246
Room occupancy rate (%)	53,0	57,2	27,7	34,3	35,0	35,5
Change of room occupancy rate (%) -units	3,7	4,1	-1,3	-2,8	5,2	4,8
Average price of room (eur, incl. VAT 9 %)	85,10	86,19	46,63	73,03	87,32	66,74
Change of average price of room (%)	2,6	2,5	-0,7	6,2	1,4	-0,9

**Appendix table 9. Balance of payments, travel 2001 - 2011**

Mill.EUR	2001	2002	2003	2004	2005	2006	2007	2008	2009	2010	<sup>1)</sup> 2011*
<b>Credit</b>	1 608,9	1 663,7	1 655,7	1 668,9	1 757,1	1 891,1	2 069,9	2 181,2	2 022,0	2 188,8	2 767,8
Russia	424,0	427,8	400,4	377,1	413,5	458,7	553,8	658,4	627,9	750,2	1 147,0
Sweden	324,4	319,7	317,8	322,4	320,6	328,2	330,1	320,8	300,0	298,8	299,0
Germany	111,5	124,8	129,3	134,8	136,4	149,7	159,6	170,6	166,2	166,4	180,5
Estonia	39,5	38,5	36,6	39,3	63,6	86,3	86,1	93,6	75,5	91,7	177,6
Great Britain	96,9	102,1	108,5	107,3	112,5	120,6	129,3	125,1	113,7	108,2	111,8
United States	82,2	78,4	75,8	79,8	86,8	87,8	92,6	94,3	87,7	90,0	103,9
Eu-countries	-	-	-	-	-	-	1 110,0	1 113,2	1 029,3	1 056,3	1 197,4
Other countries	-	-	-	-	-	-	959,9	1 068,0	992,7	1 132,5	1 570,4
<b>Debit</b>	2 070,3	2 118,8	2 150,2	2 273,4	2 460,7	2 723,4	2 907,5	3 052,9	3 135,7	3 201,2	3 432,8
Estonia	309,3	311,2	315,9	320,1	340,2	346,1	341,0	348,9	350,0	386,9	461,7
Spain	201,3	203,3	206,3	218,1	236,1	247,7	278,4	292,8	285,0	310,3	423,7
Sweden	277,5	282,5	287,2	285,6	288,1	279,8	268,3	273,4	268,9	342,3	338,0
Germany	113,2	115,1	119,0	131,9	153,1	171,2	162,8	165,0	148,8	176,6	207,3
Great Britain	95,5	98,3	95,6	102,0	103,3	108,3	107,8	105,4	108,2	161,1	204,7
United States	109,0	117,3	122,4	129,4	140,3	165,4	165,1	167,9	227,5	179,3	167,8
EU-countries	-	-	-	-	-	-	2 028,7	2 065,5	2 063,5	2 242,3	2 542,7
Other countries	-	-	-	-	-	-	878,8	987,4	1 072,2	958,9	890,1
<b>Net</b>	-461,4	-454,9	-494,5	-604,5	-703,5	-832,3	-837,6	-871,7	-1 113,8	-1 012,4	-665,0

1) \*) preliminary data

---

Suomen virallinen tilasto  
Finlands officiella statistik  
Official Statistics of Finland

Transport and Tourism 2012

### Inquiries

Ossi Nurmi 09 1734 2984

Director in charge:

Hannele Orjala

[liikenne.matkailu@stat.fi](mailto:liikenne.matkailu@stat.fi)

[www.stat.fi](http://www.stat.fi)

Source: Accommodation Statistics 2012. Statistics Finland