

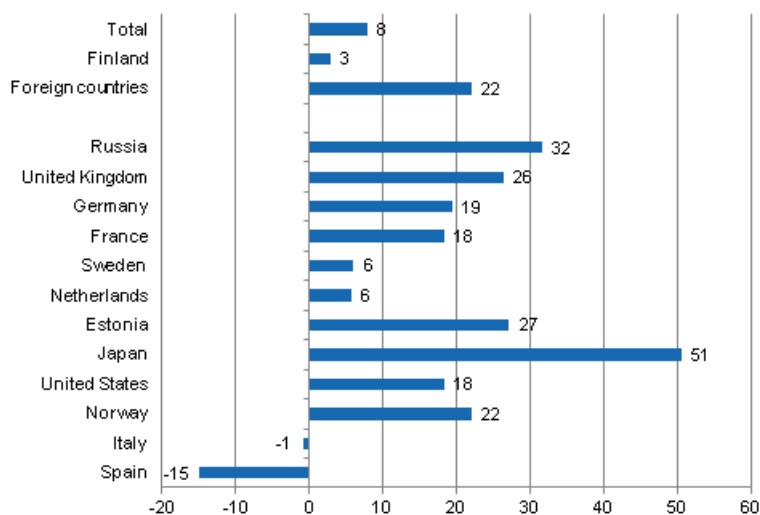
# Accommodation statistics

2012, February

## Nights spent by foreign tourists in Finland up by 22 per cent in February 2012

The number of recorded nights spent by foreign tourists at Finnish accommodation establishments in February 2012 was 428,000, which is 22 per cent higher than in February 2011. The total number of overnight stays increased by eight per cent from last year and altogether good 1.4 million overnight stays were recorded at accommodation establishments. The number of nights spent by resident tourists went up by three per cent and totalled one million in February 2012. These figures are preliminary data from Statistics Finland's statistics on accommodation establishments and they have been collected from accommodation establishments with at least 10 rooms, cottages, or caravan pitches with electricity connection, and youth hostels.

### Change in overnight stays in February 2012/2011, %

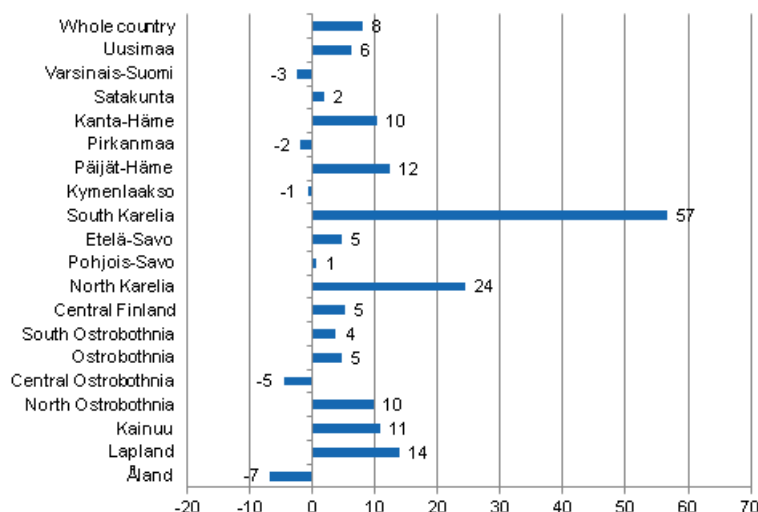


As in January, Russians were the largest group of foreign tourists in February 2012. Overnight stays recorded for them at accommodation establishments numbered nearly 79,000, which was 32 per cent more than in February 2011. Britons and Germans came next with over 40,000 recorded overnight stays each. Compared with February 2011, the number of nights spent by British visitors was 26 per cent up and that of nights spent by German visitors 19 per cent up. The fourth largest group were French visitors for whom

accommodation establishments recorded 36,000 nights spent. The number was 18 per cent higher than one year previously. However, overnight stays by visitors from Japan increased most, or by 51 per cent, and accommodation establishments recorded 20,000 of them in February 2012. Compared with February 2011, the number of nights spent by visitors from Estonia was 27 per cent up and that of nights spent by visitors from Norway 22 per cent up. By contrast, nights spent by Spanish tourists at accommodation establishments fell by 15 per cent. When examining the other most important countries of inbound tourism to Finland, the only other one for which a reduction in overnight stays was recorded was Italy, as the number of nights spent by visitors from there fell by one per cent.

By region, the total number of overnight stays in February 2012 increased most in South Karelia, up by 57 per cent, and North Karelia, up by 24 per cent. The number of recorded overnight stays grew by 14 per cent in Lapland and by 12 per cent in Päijät-Häme from February 2011. In Kainuu, overnight stays increased by 11 per cent and in both Kanta-Häme and North Ostrobothnia by 10 per cent. In Uusimaa, the number of recorded overnight stays was six per cent up year-on-year. Overnight stays decreased most in Åland, seven per cent down, and in Central Ostrobothnia, five per cent down. In the whole country, overnight stays increased by eight per cent from February 2011.

### Change in overnight stays in February by region 2012 / 2011, %



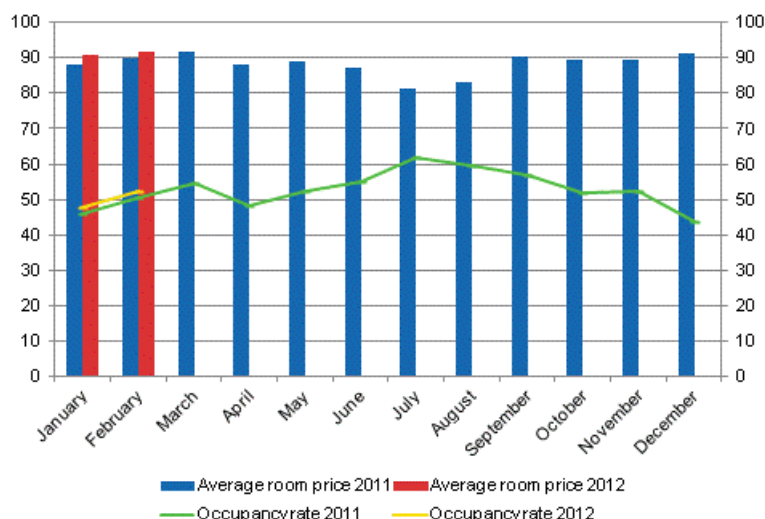
### Nights spent in hotels increased by nine per cent in February 2012

In February 2012, the total number of nights spent in hotels rose to nearly 1.3 million, which was nine per cent up year-on-year. Overnight stays by foreign tourists increased by 23 per cent and hotels recorded a total of 383,000 of them. Recorded nights spent by resident tourists in hotels numbered 874,000. The number was 3.5 per cent higher than in February 2011.

The occupancy rate of hotel rooms was 52.2 per cent in February. One year earlier, it was 50.4 per cent. Examined by region, the highest hotel room occupancy rates were recorded in Lapland, 59.5 per cent, and Central Finland, 57.9 per cent. In Rovaniemi, the hotel room occupancy rate was 80.5 per cent and in Sodankylä 75.6 per cent. Hotel room occupancy rate in Helsinki was 58.8 per cent.

In February, the realised average price of a hotel room was EUR 91.67 per day for the whole country. Twelve months previously, it was EUR 89.73.

### Hotel room occupancy rate and the monthly average price

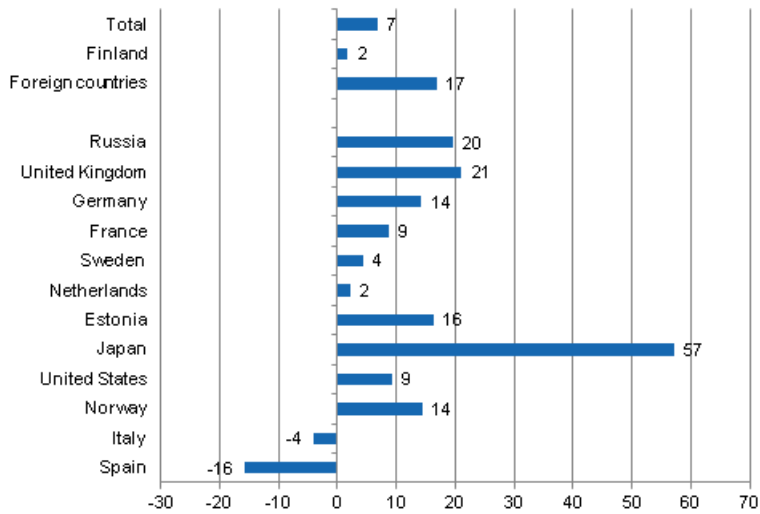


### *Total number of nights spent at all accommodation establishments grew by seven per cent in January-February 2012*

Over this January and February, the number of nights spent at accommodation establishments in Finland totalled good 2.8 million, which was seven per cent up on the respective time period of last year. Overnight stays by foreign tourists increased by 17 per cent and accommodation establishments recorded a total of one million of them. Overnight stays by resident tourists numbered 1.8 million, which was two per cent more than in January-February 2011.

Overnight stays recorded at accommodation establishments in Finland for Russian visitors in the early part of the year numbered 396,000, which was one-fifth up year-on-year. British and German visitors came next. Overnight stays by British visitors increased by 21 per cent and numbered 84,000. German visitors spent 73,000 nights at accommodation establishments. The number was 14 per cent higher than twelve months back. The number of nights spent by visitors from France rose to nearly 62,000, which was nine per cent up on the early part of 2011. Over 40,000 overnight stays were recorded for visitors from both Estonia and the Netherlands. Overnight stays by Estonian visitors increased by 16 per cent and those by Dutch visitors by two per cent. However, the biggest increase of 57 per cent was recorded in overnight stays by visitors from Japan who spent 36,000 nights at accommodation establishments. Nights spent at Finnish accommodation establishments by visitors from almost all the most important countries of inbound tourism to Finland increased in the early part of 2012.

**Change in overnight stays in January-February 2012/2011, %**



# Contents

## Tables

### Appendix tables

Appendix table 1. Capacity and its utilization, February 2012.....	6
Appendix table 2. Nights spend in all establishments, February 2012.....	7
Appendix table 3. Hotel capacity and capacity utilization, February 2012.....	8
Appendix table 4. Nights spend in hotels, February 2012.....	9
Appendix table 5. Visitor arrivals and nights spend by country of residence, February 2012.....	10
Appendix table 6. Nights spend in all establishments, 2012.....	10

# Appendix tables

**Appendix table 1. Capacity and its utilization, February 2012**

Region / municipality	Number of establishments	Number of bedrooms	Occupancy rate of bedrooms %	Change of the occupancy rate compared to previous year, %-units	Average price of nights spend, in euros (incl. VAT 9 %)
Whole country	957	56 189	49,3	1,0	52,92
Mainland Finland	934	55 467	49,8	1,1	52,92
Uusimaa	135	14 368	56,4	0,5	67,51
Helsinki	58	8 421	58,8	0,1	70,80
Varsinais-Suomi	56	3 528	41,0	-2,6	53,23
Turku	21	2 109	45,7	-1,5	52,98
Satakunta	35	1 417	36,9	0,6	60,64
Pori	11	715	40,8	3,2	55,92
Kanta-Häme	27	1 358	37,6	2,7	50,93
Hämeenlinna	11	763	44,8	6,5	53,24
Pirkanmaa	65	4 099	49,5	-6,8	52,12
Tampere	25	2 599	55,6	-9,2	60,38
Päijät-Häme	28	1 923	47,0	2,7	49,50
Lahti	10	754	48,9	1,4	56,37
Kymenlaakso	19	1 064	31,2	-2,9	52,56
Kouvola	8	543	33,3	1,5	50,32
South Karelia	28	1 611	49,9	4,4	48,29
Lappeenranta	12	858	56,6	3,6	48,61
Etelä-Savo	51	1 935	31,9	-0,3	44,52
Mikkeli	7	543	47,2	1,5	51,89
Pohjois-Savo	42	2 407	52,6	-0,5	47,60
Kuopio	13	1 034	61,2	0,3	55,34
North Karelia	39	1 556	45,1	6,9	50,53
Joensuu	11	768	61,6	15,8	56,65
Central Finland	46	2 800	54,7	4,7	43,40
Jyväskylä	13	1 308	59,4	3,3	59,59
South Ostrobothnia	36	1 645	42,1	-4,3	41,62
Seinäjoki	9	616	47,9	-14,6	56,81
Ostrobothnia	26	1 265	47,1	4,7	58,46
Vaasa	8	798	54,1	8,3	59,16
Central Ostrobothnia	14	514	40,3	-0,4	54,69
Kokkola	7	357	48,3	1,1	59,14
North Ostrobothnia	84	4 036	50,7	4,1	44,47
Oulu	11	1 451	68,7	5,8	57,71
Kainuu	41	2 047	50,7	-1,6	32,19
Kajaani	7	434	36,6	0,5	49,05
Lapland	162	7 894	54,0	4,9	47,97
Rovaniemi	17	1 385	76,4	3,1	53,97
Åland	23	722	16,7	-1,2	.
Maarianhamina	8	425	21,7	-0,5	.

**Appendix table 2. Nights spend in all establishments, February 2012**

Region / municipality	Nights spend, total	Change of nights spend, total, %	Nights spend, residents	Change of nights spend, residents, %	Nights spend, non-residents	Change of nights spend, non-residents, %
Whole country	1 449 120	7,9	1 021 359	3,0	427 761	22,0
Mainland Finland	1 442 673	8,0	1 019 133	3,0	423 540	22,4
Uusimaa	342 153	6,3	206 062	6,0	136 091	6,9
Helsinki	210 940	4,2	112 091	7,1	98 849	1,2
Varsinais-Suomi	68 046	-2,5	57 153	-4,2	10 893	7,2
Turku	43 907	1,7	36 903	0,6	7 004	7,9
Satakunta	21 380	1,8	16 474	-2,0	4 906	16,9
Pori	11 828	6,9	9 368	-3,2	2 460	77,0
Kanta-Häme	26 431	10,4	21 450	-3,2	4 981	179,0
Hämeenlinna	17 138	19,4	12 872	-3,3	4 266	309,8
Pirkanmaa	107 574	-1,9	95 694	-1,7	11 880	-3,2
Tampere	63 896	-1,6	53 594	-1,0	10 302	-4,5
Päijät-Häme	53 042	12,4	44 402	5,8	8 640	65,4
Lahti	15 981	15,4	10 874	7,1	5 107	38,2
Kymenlaakso	15 109	-0,8	11 156	0,5	3 953	-4,4
Kouvola	8 039	13,0	6 909	13,7	1 130	8,5
South Karelia	46 718	56,6	25 172	64,2	21 546	48,6
Lappeenranta	26 946	122,9	18 489	141,4	8 457	91,0
Etelä-Savo	30 806	4,7	24 679	-2,4	6 127	48,1
Mikkeli	11 604	14,2	9 635	9,6	1 969	44,6
Pohjois-Savo	68 657	0,7	60 546	-1,3	8 111	18,9
Kuopio	30 622	5,6	27 228	2,3	3 394	42,5
North Karelia	34 857	24,3	22 900	-5,5	11 957	213,3
Joensuu	20 212	46,3	10 771	-3,5	9 441	256,0
Central Finland	101 750	5,2	87 941	3,5	13 809	17,3
Jyväskylä	36 294	10,6	30 823	5,4	5 471	53,9
South Ostrobothnia	35 427	3,8	33 068	7,1	2 359	-27,1
Seinäjoki	12 334	-7,3	10 762	2,6	1 572	-44,2
Ostrobothnia	24 963	4,6	18 981	2,2	5 982	12,9
Vaasa	18 320	19,2	13 892	21,2	4 428	13,2
Central Ostrobothnia	8 943	-4,6	8 237	-5,2	706	3,2
Kokkola	6 703	-4,7	6 074	-4,9	629	-3,2
North Ostrobothnia	119 936	9,7	98 462	4,2	21 474	44,2
Oulu	42 407	1,4	35 551	-0,4	6 856	12,0
Kainuu	92 211	10,8	85 001	7,9	7 210	63,8
Kajaani	6 838	-13,9	6 198	-16,4	640	20,8
Lapland	244 670	13,9	101 755	-1,5	142 915	28,2
Rovaniemi	50 058	14,1	13 860	-2,5	36 198	22,0
Åland	6 447	-6,8	2 226	-9,5	4 221	-5,3
Maarianhamina	4 024	-1,3	1 770	-10,2	2 254	7,2

**Appendix table 3. Hotel capacity and capacity utilization, February 2012**

Region / municipality	Number of establishments	Number of bedrooms	Occupancy rate of bedrooms %	Change of the occupancy rate compared to previous year, %-units	Room price, euros (Vat inc. 9 %)	<sup>1)</sup> RevPAR, euros (Vat inc. 9 %)
Whole country	614	49 402	52,2	1,8	91,67	47,81
Mainland Finland	604	48 882	52,5	1,8	91,67	48,14
Uusimaa	114	14 028	56,8	0,5	99,51	56,53
Helsinki	52	8 308	58,8	0,1	104,4	61,41
Varsinais-Suomi	37	3 067	44,4	-0,3	87,28	38,76
Turku	18	2 041	46,4	-1,4	83,34	38,65
Satakunta	23	1 147	41,8	2,1	86,54	36,15
Pori	8	612	44,4	6,2	80,93	35,90
Kanta-Häme	17	1 208	40,6	3,4	86,68	35,17
Hämeenlinna	8	721	46,9	7,0	90,47	42,39
Pirkanmaa	42	3 522	51,0	-7,4	91,61	46,69
Tampere	22	2 447	55,0	-9,1	91,97	50,63
Päijät-Häme	16	1 772	49,4	2,7	85,74	42,33
Lahti	7	716	49,5	1,3	84,65	41,88
Kymenlaakso	13	890	34,2	-3,3	83,05	28,40
Kouvola	5	419	40,0	2,4	80,13	32,06
South Karelia	18	1 386	53,6	4,3	94,88	50,85
Lappeenranta	7	722	60,4	3,0	87,91	53,13
Etelä-Savo	26	1 519	35,6	0,6	72,41	25,80
Mikkeli	5	490	50,0	1,5	81,47	40,78
Pohjois-Savo	27	2 187	54,1	-0,6	86,98	47,07
Kuopio	8	956	62,1	0,0	92,38	57,35
North Karelia	24	1 356	49,3	7,4	85,90	42,39
Joensuu	10	750	62,7	16,5	82,99	52,05
Central Finland	27	2 480	57,9	5,6	99,89	57,79
Jyväskylä	9	1 202	63,0	4,1	94,62	59,61
South Ostrobothnia	22	1 404	47,0	-3,6	72,01	33,82
Seinäjoki	8	616	47,9	-14,6	79,73	38,22
Ostrobothnia	21	1 220	48,2	5,3	83,95	40,45
Vaasa	8	798	54,1	8,3	86,56	46,83
Central Ostrobothnia	10	467	42,3	-0,2	77,01	32,54
Kokkola	5	329	49,7	1,3	79,72	39,64
North Ostrobothnia	48	3 281	53,4	5,2	83,53	44,62
Oulu	10	1 423	69,2	5,9	81,47	56,35
Kainuu	23	1 650	53,9	0,5	72,53	39,09
Kajaani	6	387	38,8	-0,5	75,08	29,12
Lapland	96	6 298	59,5	7,5	92,66	55,11
Rovaniemi	12	1 248	80,5	3,7	86,71	69,83
Åland	10	520	18,6	-2,0	.	.
Maarianhamina	5	362	23,6	-0,8	.	.

1) RevPar = Average revenue per available room, equivalent to the accommodation revenue of an establishment divided by the available room capacity.



**Appendix table 4. Nights spend in hotels, February 2012**

Region / municipality	Nights spend, total	Change of nights spend, total, %	Nights spend, residents	Change of nights spend, residents, %	Nights spend, non-residents	Change of nights spend, non-residents, %
Whole country	1 257 869	8,7	874 392	3,5	383 477	22,8
Mainland Finland	1 253 646	8,8	872 562	3,5	381 084	22,9
Uusimaa	329 533	6,4	198 443	5,8	131 090	7,4
Helsinki	201 746	4,4	107 230	6,8	94 516	1,9
Varsinais-Suomi	63 490	1,9	52 976	-0,6	10 514	16,8
Turku	43 103	2,3	36 387	0,4	6 716	14,6
Satakunta	18 465	10,7	13 886	10,5	4 579	11,2
Pori	10 367	27,6	8 130	20,7	2 237	60,9
Kanta-Häme	23 947	10,1	19 030	-5,1	4 917	190,6
Hämeenlinna	16 486	20,0	12 220	-3,8	4 266	309,8
Pirkanmaa	87 436	-2,2	76 473	-2,1	10 963	-3,0
Tampere	59 504	-0,4	49 688	-0,2	9 816	-1,6
Päijät-Häme	46 134	13,2	38 224	6,2	7 910	65,3
Lahti	15 226	13,7	10 519	6,2	4 707	35,0
Kymenlaakso	12 877	-2,8	9 462	0,0	3 415	-9,7
Kouvola	6 953	16,4	5 899	16,8	1 054	14,1
South Karelia	41 926	47,3	21 546	52,9	20 380	41,7
Lappeenranta	22 969	95,2	15 619	110,4	7 350	69,2
Etelä-Savo	24 509	0,9	20 795	-3,8	3 714	39,3
Mikkeli	10 985	14,1	9 193	9,8	1 792	43,1
Pohjois-Savo	61 890	-1,0	55 243	-3,3	6 647	23,6
Kuopio	28 001	4,8	24 994	1,1	3 007	50,7
North Karelia	32 129	23,4	20 949	-6,4	11 180	206,1
Joensuu	19 871	44,4	10 677	-4,0	9 194	249,2
Central Finland	93 226	5,1	80 209	2,8	13 017	21,4
Jyväskylä	34 397	10,4	28 981	3,7	5 416	68,3
South Ostrobothnia	32 417	6,3	30 091	10,3	2 326	-27,6
Seinäjoki	12 019	-6,4	10 447	4,2	1 572	-44,2
Ostrobothnia	24 273	12,4	18 291	10,5	5 982	18,5
Vaasa	18 320	19,2	13 892	21,2	4 428	13,2
Central Ostrobothnia	7 784	-5,4	7 187	-5,7	597	-1,2
Kokkola	6 246	-3,1	5 726	-2,5	520	-8,9
North Ostrobothnia	88 368	8,3	70 822	2,2	17 546	43,2
Oulu	40 050	1,1	33 589	-0,8	6 461	12,6
Kainuu	69 286	18,0	63 581	14,4	5 705	82,0
Kajaani	6 517	-16,8	5 877	-19,7	640	24,3
Lapland	195 956	16,4	75 354	-1,0	120 602	30,6
Rovaniemi	45 822	14,6	12 652	0,7	33 170	20,9
Åland	4 223	-3,4	1 830	-18,0	2 393	12,0
Maarianhamina	3 496	1,8	1 636	-11,0	1 860	16,6

**Appendix table 5. Visitor arrivals and nights spend by country of residence, February 2012**

Country of residence	Visitor arrivals in all accommodation establishments	Nights spend in all accommodation establishments	Change of nights spend in all accommodation establishments, %	Nights spend in hotels	Change of nights spend in hotels, %
Total	719 856	1 449 120	7,9	1 257 869	8,7
Finland	543 795	1 021 359	3,0	874 392	3,5
Foreign countries	176 061	427 761	22,0	383 477	22,8
Sweden	16 313	25 974	6,1	24 331	6,2
Germany	14 701	42 483	19,4	39 229	17,5
Russia	41 323	78 817	31,6	69 896	31,1
United Kingdom	13 782	44 786	26,4	37 316	35,4
United States	4 428	10 725	18,3	10 512	20,9
Norway	4 983	10 158	22,1	8 992	20,5
Netherlands	6 552	24 036	5,8	19 014	-0,8
Italy	2 931	7 125	-0,8	6 597	-2,1
France	9 346	36 372	18,4	33 633	18,3
Japan	10 112	20 009	50,6	19 593	51,7
Estonia	7 517	21 153	27,2	17 214	29,5
Spain	2 558	6 169	-14,9	5 686	-13,8

**Appendix table 6. Nights spend in all establishments, 2012**

Month	Nights spend, total	Change of nights spend, total, %	Nights spend, residents	Change of nights spend, residents, %	Nights spend, non-residents	Change of nights spend, non-residents, %
Total	2 840 589	6,9	1 801 704	1,8	1 038 885	16,9
January	1 391 469	5,8	780 345	0,3	611 124	13,6
February	1 449 120	7,9	1 021 359	3,0	427 761	22,0

---

Suomen virallinen tilasto  
Finlands officiella statistik  
Official Statistics of Finland

Transport and Tourism 2012

### Inquiries

Marjut Tuominen 09 1734 3556

Merja Rönkä 09 1734 3209

Director in charge:

Hannele Orjala

[liikenne.matkailu@stat.fi](mailto:liikenne.matkailu@stat.fi)

[www.stat.fi](http://www.stat.fi)

Source: Accommodation Statistics 2012. Statistics Finland