

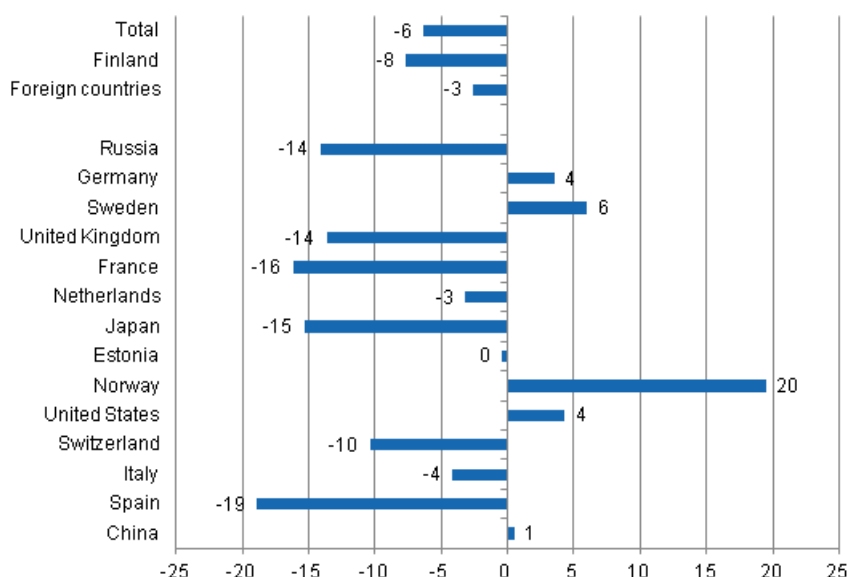
Accommodation statistics

2014, March

Nights spent by resident tourists decreased by 7.7 per cent in March 2014

The number of recorded nights spent by resident tourists at Finnish accommodation establishments in March 2014 was nearly 1.2 million, which was 7.7 per cent lower than one year earlier. Overnight stays by foreign tourists at accommodation establishments numbered close on 456,000. The number was 2.6 per cent lower than in March 2013. The total number of overnight stays decreased by 6.3 per cent from the year before. Accommodation establishments recorded good 1.6 million of them in March 2014. These figures are preliminary data from Statistics Finland's statistics on accommodation establishments and they have been collected from accommodation establishments with at least 20 beds or caravan pitches with electricity connection, and youth hostels.

Change in overnight stays in March 2014/2013, %

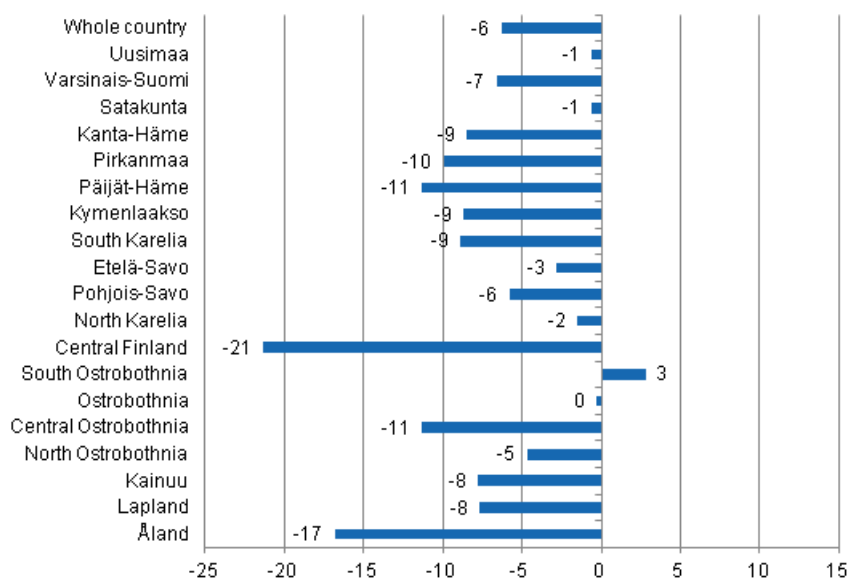


Overnight stays by Russians have turned to a sharp decline and in March, nearly 109,000 overnight stays were recorded for them, which is 14.1 per cent down from the year before. However, Russians were by

far the largest group of foreign tourists in March 2014. Germans came next with good 44,000 nights spent and they had 3.5 per cent more overnight stays at accommodation establishments than in March 2013. More than 30,000 overnight stays at accommodation establishments were recorded for both Swedish and British visitors. Overnight stays by Swedes increased by six per cent from the year before, while the number of nights spent by British tourists decreased by around 14 per cent, similarly as for Russians. The overnight stays of French and Japanese visitors also showed a strong decrease. Overnight stays recorded at accommodation establishments for French visitors totalled close on 27,000, which was 16.2 per cent down from one year before. Nearly 18,000 overnight stays were recorded for Japanese visitors. This was 15.3 per cent lower than one year earlier. However, the biggest decrease was recorded for Spanish tourists, whose overnight stays went down by 18.9 per cent from the year before. By contrast, the number of overnight stays by Norwegians increased strongly in March 2014 and one-fifth more overnight stays at accommodation establishments were recorded for them than in March 2013.

By region, the total number of overnight stays increased in March only in South Ostrobothnia, up by 2.8 per cent. The number of nights spent in Ostrobothnia remained on level with the previous year. In all other regions, the numbers of overnight stays went down in March 2014. The biggest decreases in overnight stays were recorded in Central Finland, 21.3 per cent, and in Åland, 16.8 per cent. Overnight stays in Pirkanmaa, Päijät-Häme and Central Ostrobothnia diminished by 10 to 11 per cent from last year. Kanta-Häme, Kymenlaakso and South Karelia each lost nine per cent of nights spent compared with March 2013. Overnight stays in the whole country dropped by 6.3 per cent from the year before.

Change in overnight stays in March by region 2014 / 2013, %



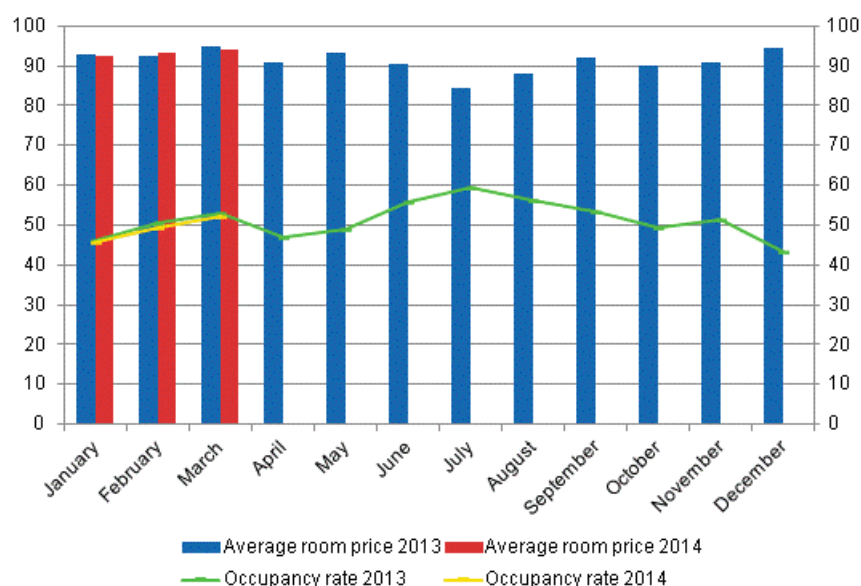
Nights spent in hotels decreased by 6.4 per cent in March 2014

In March 2014, the total number of nights spent in hotels was just under 1.4 million, which was 6.4 per cent lower than twelve months earlier. Overnight stays recorded for resident tourists at accommodation establishments numbered 953,000, which was 7.8 per cent lower than in March 2013. Overnight stays by foreign tourists decreased by 2.7 per cent and hotels recorded a total of 399,000 of them.

The occupancy rate of hotel rooms in the whole country was 52.3 per cent in March. One year earlier, it was 52.8 per cent. Examined by region, the highest hotel room occupancy rates were recorded in Lapland, 67.1 per cent, and Uusimaa, 58.6 per cent. In Kittilä, the hotel room occupancy rate was 81.6 per cent and in Rovaniemi, it rose to 71.2 per cent. The hotel room occupancy rate in Helsinki was 63.2 per cent.

In March 2014, the realised average price of a hotel room was EUR 94.21 per day for the whole country. Twelve months previously it was EUR 94.88.

Hotel room occupancy rate and the monthly average price

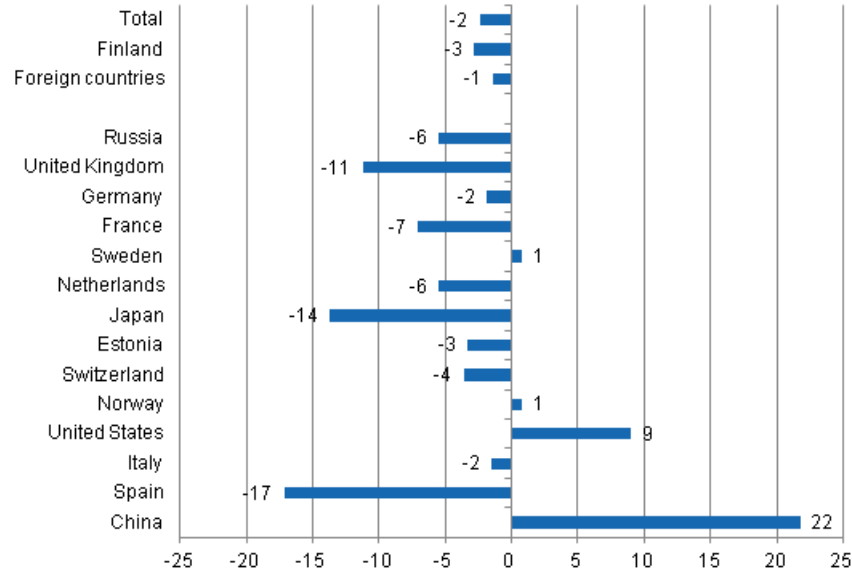


Total number of nights spent at all accommodation establishments fell by 2.4 per cent in January to March 2014

Over January to March 2014, the number of nights spent at accommodation establishments in Finland totalled 4.4 million, which was 2.4 per cent down from the corresponding period of last year. Overnight stays by resident tourists decreased by 2.8 per cent and accommodation establishments recorded just close on three million of them. Overnight stays by foreign tourists numbered almost 1.5 million, which was 1.4 per cent lower than in January to March 2013.

Nearly 492,000 nights spent at Finnish accommodation establishments were recorded for Russians, and they were by far the largest group of foreign visitors in January to March 2014. The growth in Russians' overnight stays at Finnish accommodation establishments halted in January and the decrease in nights spent that started in February continued through March. In the January to March period, 5.5 per cent fewer overnight stays at accommodation establishments were recorded for Russians than in the corresponding period of last year. The second largest group was British visitors. A total of 115,000 overnight stays were recorded for them, which was 11.2 per cent lower than in January to March 2013. German visitors made up the third largest group with good 112,000 overnight stays. The decrease in overnight stays at accommodation establishments that started for them in June 2013 ended in March, but 1.9 per cent fewer overnight stays were still recorded for them in January to March 2014 than one year earlier. Overnight stays by Spanish visitors still decreased strongly in January to March and their stays went down by 17.1 per cent from the corresponding period of twelve months earlier. Overnight stays by Japanese tourists declined by 13.7 per cent and good 53,000 nights were recorded for them at Finnish accommodation establishments. Among the most important countries of inbound tourism to Finland, overnight stays by Chinese visitors increased most, or by 21.8 per cent, during the January to March period.

Change in overnight stays in January-March 2014/2013, %



Contents

Tables

Appendix tables

Appendix table 1.1. Capacity and its utilization, March 2014.....	6
Appendix table 1.2. Capacity and its utilization, January-March 2014.....	7
Appendix table 2.1. Nights spend in all establishments, March 2014.....	8
Appendix table 2.2. Nights spend in all establishments, January-March 2014.....	9
Appendix table 3.1. Hotel capacity and capacity utilization, March 2014.....	10
Appendix table 3.2. Hotel capacity and capacity utilization, January-March 2014.....	11
Appendix table 4.1. Nights spend in hotels, March 2014.....	12
Appendix table 4.2. Nights spend in hotels, January-March 2014.....	13
Appendix table 5.1. Visitor arrivals and nights spend by country of residence, March 2014.....	14
Appendix table 5.2. Visitor arrivals and nights spend by country of residence, January-March 2014.....	14
Appendix table 6. Nights spend in all establishments, 2014.....	15

Appendix tables

Appendix table 1.1. Capacity and its utilization, March 2014

Region	Number of establishments	Number of bedrooms	Occupancy rate of bedrooms, %	Change of the occupancy rate compared to previous year, %-units	Average price of nights spend, in euros (incl. VAT 10 %)
Whole country	1,101	58,959	49.6	-0.8	55.73
Mainland Finland	1,074	58,122	50.0	-0.9	55.73
Uusimaa	140	14,398	57.8	2.8	72.07
Varsinais-Suomi	60	3,637	43.3	-4.3	53.55
Satakunta	40	1,547	32.8	-3.7	58.75
Kanta-Häme	32	1,434	33.3	0.4	46.44
Pirkanmaa	70	4,438	45.1	-0.3	58.39
Päijät-Häme	35	2,003	37.8	-5.8	56.76
Kymenlaakso	27	1,134	34.4	-0.8	52.74
South Karelia	35	1,732	45.4	-6.3	53.00
Etelä-Savo	77	2,176	33.8	-0.2	39.89
Pohjois-Savo	50	2,593	48.2	-2.2	47.95
North Karelia	49	1,459	49.3	6.0	51.31
Central Finland	46	3,085	48.3	-1.2	49.41
South Ostrobothnia	49	1,864	38.3	0.8	44.20
Ostrobothnia	29	1,279	44.3	-0.0	63.17
Central Ostrobothnia	14	543	40.6	-0.1	57.29
North Ostrobothnia	97	4,328	51.2	-1.1	45.63
Kainuu	44	2,234	52.6	-5.6	39.26
Lapland	180	8,238	62.4	-2.6	50.64
Åland	27	837	20.5	1.3	..

Appendix table 1.2. Capacity and its utilization, January-March 2014

Region	Number of establishments	Number of bedrooms	Occupancy rate of bedrooms, %	Change of the occupancy rate compared to previous year, %-units	Average price of nights spend, in euros (incl. VAT 10 %)
Whole country	1,092	58,871	46.4	-0.6	54.49
Mainland Finland	1,067	58,066	46.8	-0.6	54.50
Uusimaa	140	14,497	56.0	0.8	68.06
Varsinais-Suomi	60	3,634	40.1	-1.0	52.26
Satakunta	40	1,541	31.5	-3.4	58.22
Kanta-Häme	32	1,480	30.9	-0.7	47.08
Pirkanmaa	70	4,400	42.4	-0.6	55.38
Päijät-Häme	35	2,003	39.3	-2.3	51.75
Kymenlaakso	27	1,131	33.6	-1.4	52.29
South Karelia	35	1,721	45.5	-5.1	51.88
Etelä-Savo	76	2,175	34.0	0.4	38.99
Pohjois-Savo	49	2,581	45.4	-2.1	48.18
North Karelia	49	1,460	42.9	4.0	49.36
Central Finland	46	3,090	46.6	-0.1	48.55
South Ostrobothnia	48	1,815	36.1	-1.1	42.42
Ostrobothnia	29	1,282	39.9	-1.3	61.55
Central Ostrobothnia	14	543	37.9	1.2	57.17
North Ostrobothnia	96	4,295	46.5	0.9	44.92
Kainuu	44	2,230	47.3	-1.8	39.56
Lapland	176	8,188	54.5	-1.5	51.01
Åland	25	804	17.2	-0.7	..

Appendix table 2.1. Nights spend in all establishments, March 2014

Region	Nights spend, total	Change of nights spend, total, %	Nights spend, residents	Change of nights spend, residents, %	Nights spend, non-residents	Change of nights spend, non-residents, %
Whole country	1,627,279	-6.3	1,171,771	-7.7	455,508	-2.6
Mainland Finland	1,616,942	-6.3	1,167,856	-7.6	449,086	-2.4
Uusimaa	361,932	-0.6	205,255	-0.9	156,677	-0.1
Varsinais-Suomi	71,995	-6.6	57,528	-12.7	14,467	28.9
Satakunta	22,516	-0.6	18,295	-0.1	4,221	-2.7
Kanta-Häme	25,129	-8.5	22,922	-9.4	2,207	2.7
Pirkanmaa	97,581	-9.9	83,964	-12.5	13,617	10.8
Päijät-Häme	45,253	-11.3	37,763	-10.0	7,490	-17.0
Kymenlaakso	18,469	-8.7	11,666	-7.8	6,803	-10.1
South Karelia	50,981	-8.9	26,071	8.5	24,910	-22.0
Etelä-Savo	40,318	-2.8	29,546	-1.4	10,772	-6.3
Pohjois-Savo	72,315	-5.8	62,270	-7.8	10,045	8.6
North Karelia	40,033	-1.5	26,405	-18.2	13,628	62.4
Central Finland	86,102	-21.3	73,257	-22.6	12,845	-12.3
South Ostrobothnia	41,457	2.8	39,634	3.4	1,823	-10.1
Ostrobothnia	25,824	-0.3	19,850	-6.7	5,974	29.2
Central Ostrobothnia	9,552	-11.3	8,846	-7.2	706	-43.0
North Ostrobothnia	155,757	-4.7	129,634	-6.1	26,123	2.8
Kainuu	116,482	-7.8	109,875	-8.2	6,607	0.8
Lapland	335,246	-7.7	205,075	-7.6	130,171	-7.9
Åland	10,337	-16.8	3,915	-24.9	6,422	-11.0

Appendix table 2.2. Nights spend in all establishments, January-March 2014

Region	Nights spend, total	Change of nights spend, total, %	Nights spend, residents	Change of nights spend, residents, %	Nights spend, non-residents	Change of nights spend, non-residents, %
Whole country	4,434,464	-2.4	2,958,159	-2.8	1,476,305	-1.4
Mainland Finland	4,412,023	-2.3	2,948,740	-2.8	1,463,283	-1.3
Uusimaa	1,060,068	0.8	586,904	0.7	473,164	0.9
Varsinais-Suomi	200,831	-2.4	162,082	-5.6	38,749	13.8
Satakunta	60,418	-2.1	48,567	-1.2	11,851	-5.7
Kanta-Häme	69,149	-7.0	61,054	-4.3	8,095	-23.6
Pirkanmaa	283,082	-6.5	241,447	-6.9	41,635	-4.2
Päijät-Häme	140,535	-4.0	114,239	-4.9	26,296	0.2
Kymenlaakso	54,691	-7.2	32,297	-9.6	22,394	-3.5
South Karelia	150,582	-5.6	65,075	-1.6	85,507	-8.5
Etelä-Savo	121,916	2.8	82,256	1.1	39,660	6.5
Pohjois-Savo	196,772	-4.5	159,002	-5.4	37,770	-0.5
North Karelia	103,798	2.4	70,744	-4.8	33,054	22.5
Central Finland	254,503	-14.0	204,177	-16.5	50,326	-2.6
South Ostrobothnia	109,683	3.5	103,992	4.6	5,691	-14.0
Ostrobothnia	66,802	0.1	51,899	-4.1	14,903	17.9
Central Ostrobothnia	25,776	-5.8	23,053	-6.3	2,723	-1.4
North Ostrobothnia	391,999	-1.3	298,403	-2.1	93,596	1.6
Kainuu	298,180	5.5	258,300	5.9	39,880	3.2
Lapland	823,238	-3.3	385,249	-0.8	437,989	-5.4
Åland	22,441	-15.2	9,419	-14.8	13,022	-15.5

Appendix table 3.1. Hotel capacity and capacity utilization, March 2014

Region / municipality	Number of establishments	Number of bedrooms	Occupancy rate of bedrooms, %	Change compared to previous year, %-units	Room price, euros (incl. VAT 10 %)	¹⁾ RevPAR, euros (incl. VAT 10 %)
Whole country	623	50,871	52.3	-0.5	94.21	49.31
Mainland Finland	612	50,279	52.7	-0.6	94.22	49.63
Uusimaa	113	13,989	58.6	2.9	100.32	58.82
Espoo	11	1,189	48.7	1.2	86.50	42.11
Helsinki	53	8,232	63.2	3.5	104.91	66.25
Vantaa	11	2,186	70.9	3.5	99.70	70.71
Varsinais-Suomi	36	3,124	46.2	-6.2	77.30	35.72
Turku	18	2,062	51.2	2.8	78.50	40.19
Satakunta	24	1,243	38.6	-2.9	84.82	32.74
Pori	9	739	36.5	-9.0	81.65	29.77
Kanta-Häme	19	1,247	36.1	1.2	79.18	28.58
Hämeenlinna	8	739	31.9	-0.6	91.39	29.19
Pirkanmaa	41	3,838	46.7	0.2	91.23	42.64
Tampere	24	2,828	50.9	0.6	92.76	47.23
Päijät-Häme	16	1,821	39.9	-5.7	92.86	37.03
Lahti	6	700	50.6	-3.7	103.31	52.24
Kymenlaakso	16	935	38.0	0.5	80.58	30.64
Kouvola	6	427	38.9	1.7	75.97	29.58
South Karelia	17	1,351	47.3	-7.3	100.19	47.34
Lappeenranta	7	743	53.0	-8.1	91.48	48.53
Etelä-Savo	27	1,558	38.1	0.1	69.96	26.63
Mikkeli	8	559	43.5	-0.7	77.37	33.68
Pohjois-Savo	30	2,344	49.5	-2.3	86.75	42.97
Kuopio	15	1,410	55.6	-3.5	91.47	50.84
North Karelia	22	1,205	54.0	6.6	89.13	48.11
Joensuu	7	610	70.2	17.6	89.79	63.08
Central Finland	27	2,763	51.1	-1.1	91.02	46.53
Jyväskylä	10	1,376	56.3	5.0	89.99	50.71
South Ostrobothnia	26	1,529	45.0	1.9	77.55	34.89
Seinäjoki	8	625	49.9	1.8	90.22	45.01
Ostrobothnia	22	1,222	45.8	-0.3	89.14	40.82
Vaasa	8	804	54.6	3.2	91.57	49.98
Central Ostrobothnia	10	495	42.7	1.3	75.71	32.35
Kokkola	5	357	49.4	1.5	79.45	39.27
North Ostrobothnia	48	3,475	53.3	-0.9	93.38	49.75
Kuusamo	11	770	55.5	-4.4	117.67	65.29
Oulu	12	1,590	61.7	0.5	88.09	54.31
Kainuu	20	1,742	56.2	-6.1	89.26	50.13
Kajaani	6	409	37.5	-2.5	80.10	30.02
Sotkamo	6	1,084	70.3	-8.6	94.57	66.51
Lapland	98	6,398	67.1	-2.5	104.30	70.00
Rovaniemi	12	1,236	71.2	6.5	88.92	63.33
Åland	11	592	24.1	1.9
Maarianhamina	5	363	32.8	3.9

1) RevPar = Average accommodation sales revenue per available room. Calculation formula: RevPar = Average room price * Occupancy rate.

Appendix table 3.2. Hotel capacity and capacity utilization, January-March 2014

Region / municipality	Number of establishments	Number of bedrooms	Occupancy rate of bedrooms, %	Change compared to previous year, %-units	Room price, euros (incl. VAT 10 %)	¹⁾ RevPAR, euros (incl. VAT 10 %)
Whole country	622	50,915	49.1	-0.6	93.43	45.91
Mainland Finland	611	50,331	49.5	-0.6	93.43	46.22
Uusimaa	114	14,094	56.6	0.8	99.10	56.14
Espoo	11	1,189	47.9	0.4	84.78	40.60
Helsinki	54	8,346	60.4	0.9	103.17	62.36
Vantaa	11	2,183	70.3	2.4	99.40	69.92
Varsinais-Suomi	36	3,123	42.6	-2.4	79.46	33.87
Turku	18	2,059	46.5	0.7	81.46	37.87
Satakunta	24	1,235	37.0	-2.5	83.96	31.06
Pori	9	728	37.8	-5.0	80.26	30.31
Kanta-Häme	19	1,292	33.5	-0.2	78.45	26.26
Hämeenlinna	8	732	32.1	-2.3	91.16	29.30
Pirkanmaa	41	3,821	43.6	0.0	90.53	39.51
Tampere	24	2,828	47.0	-0.7	91.42	42.92
Päijät-Häme	16	1,822	41.2	-2.6	88.97	36.64
Lahti	6	700	47.6	-4.4	96.74	46.05
Kymenlaakso	16	935	36.7	-1.4	82.97	30.49
Kouvola	6	427	36.9	-3.1	78.47	28.93
South Karelia	17	1,340	47.7	-6.7	98.06	46.78
Lappeenranta	7	743	49.4	-12.9	91.56	45.23
Etelä-Savo	27	1,561	37.4	-0.3	69.90	26.12
Mikkeli	8	559	43.5	-0.9	78.01	33.96
Pohjois-Savo	29	2,332	46.8	-2.4	87.21	40.82
Kuopio	14	1,400	53.0	-3.3	91.33	48.40
North Karelia	22	1,205	47.2	4.4	87.15	41.14
Joensuu	7	610	58.7	10.4	86.52	50.75
Central Finland	27	2,763	49.1	-0.2	95.95	47.10
Jyväskylä	10	1,376	53.0	3.2	94.80	50.23
South Ostrobothnia	26	1,483	42.6	-0.4	75.44	32.12
Seinäjoki	8	608	48.5	0.5	85.18	41.32
Ostrobothnia	22	1,225	41.2	-1.5	87.73	36.15
Vaasa	8	804	49.6	2.8	90.29	44.79
Central Ostrobothnia	10	495	39.5	1.6	75.38	29.77
Kokkola	5	357	45.9	2.6	78.77	36.16
North Ostrobothnia	48	3,454	48.8	1.1	90.88	44.33
Kuusamo	11	767	49.6	-0.7	113.85	56.46
Oulu	12	1,592	56.7	2.2	87.45	49.62
Kainuu	20	1,743	51.1	-2.4	87.39	44.65
Kajaani	6	409	34.1	-4.1	81.15	27.71
Sotkamo	6	1,084	62.8	-2.7	94.69	59.48
Lapland	97	6,406	59.2	-2.0	102.59	60.74
Rovaniemi	12	1,236	74.7	3.4	98.84	73.84
Åland	11	585	20.2	-0.8
Maarianhamina	5	363	28.9	0.5

1) RevPar = Average accommodation sales revenue per available room. Calculation formula: RevPar = Average room price * Occupancy rate.

Appendix table 4.1. Nights spend in hotels, March 2014

Region / municipality	Nights spend, total	Change of nights spend, total, %	Nights spend, residents	Change of nights spend, residents, %	Nights spend, non-residents	Change of nights spend, non-residents, %
Whole country	1,352,167	-6.4	953,222	-7.8	398,945	-2.7
Mainland Finland	1,344,608	-6.3	950,579	-7.7	394,029	-2.7
Uusimaa	347,268	-1.4	195,936	-1.9	151,332	-0.6
Espoo	24,564	-2.5	14,820	4.7	9,744	-11.7
Helsinki	216,476	-2.9	110,457	-0.6	106,019	-5.3
Vantaa	67,169	4.1	39,238	-7.3	27,931	25.8
Varsinais-Suomi	64,344	-9.1	51,392	-15.6	12,952	30.1
Turku	44,694	-7.5	35,433	-14.0	9,261	30.1
Satakunta	20,044	2.0	15,944	-0.2	4,100	11.6
Pori	10,892	-5.2	8,894	-9.7	1,998	21.5
Kanta-Häme	22,726	-5.7	20,538	-6.5	2,188	2.7
Hämeenlinna	11,464	-9.5	10,078	-11.7	1,386	10.4
Pirkanmaa	83,236	-6.6	71,155	-8.9	12,081	9.4
Tampere	65,817	2.6	54,923	1.4	10,894	8.9
Päijät-Häme	38,036	-12.1	31,553	-10.0	6,483	-21.4
Lahti	15,612	9.5	11,500	27.3	4,112	-21.3
Kymenlaakso	15,687	1.6	9,907	3.3	5,780	-1.2
Kouvola	7,493	5.6	5,777	10.1	1,716	-7.3
South Karelia	44,062	-7.6	22,065	12.5	21,997	-21.6
Lappeenranta	26,661	0.4	16,675	22.2	9,986	-22.7
Etelä-Savo	28,705	-1.4	24,412	2.2	4,293	-17.7
Mikkeli	11,439	-6.4	9,430	-0.6	2,009	-26.4
Pohjois-Savo	62,947	-7.5	55,847	-8.4	7,100	0.0
Kuopio	42,660	-8.4	37,619	-9.2	5,041	-1.8
North Karelia	33,146	-1.7	22,003	-19.4	11,143	73.2
Joensuu	19,431	13.2	11,697	-8.8	7,734	78.1
Central Finland	79,264	-21.5	66,876	-23.3	12,388	-9.9
Jyväskylä	34,914	3.0	29,859	0.6	5,055	19.9
South Ostrobothnia	36,576	4.3	34,908	5.1	1,668	-10.2
Seinäjoki	12,798	11.4	12,091	17.8	707	-42.5
Ostrobothnia	23,043	-2.6	17,441	-9.8	5,602	29.6
Vaasa	17,702	-1.0	12,879	-10.3	4,823	36.8
Central Ostrobothnia	8,639	-4.3	8,078	-2.9	561	-21.4
Kokkola	6,896	-3.6	6,342	-3.1	554	-9.5
North Ostrobothnia	107,229	-7.1	88,238	-8.8	18,991	1.2
Kuusamo	34,760	-8.0	27,098	-15.5	7,662	34.3
Oulu	47,632	-6.7	40,423	-5.2	7,209	-14.5
Kainuu	80,901	-10.8	77,309	-10.3	3,592	-20.7
Kajaani	7,234	-11.9	6,517	-13.9	717	11.0
Sotkamo	69,833	-10.6	67,337	-10.0	2,496	-25.0
Lapland	248,755	-6.8	136,977	-6.1	111,778	-7.5
Rovaniemi	45,184	5.4	16,628	3.0	28,556	6.7
Åland	7,559	-18.2	2,643	-35.7	4,916	-4.0
Maarianhamina	5,855	-22.9	2,424	-38.1	3,431	-6.7

Appendix table 4.2. Nights spend in hotels, January-March 2014

Region / municipality	Nights spend, total	Change of nights spend, total, %	Nights spend, residents	Change of nights spend, residents, %	Nights spend, non-residents	Change of nights spend, non-residents, %
Whole country	3,741,941	-3.1	2,465,444	-3.7	1,276,497	-1.9
Mainland Finland	3,725,002	-3.1	2,458,659	-3.7	1,266,343	-1.9
Uusimaa	1,015,525	-0.1	561,035	-0.1	454,490	0.0
Espoo	72,914	0.9	39,803	-3.4	33,111	6.6
Helsinki	634,557	-0.1	315,227	4.3	319,330	-4.1
Vantaa	200,905	5.0	121,692	-3.2	79,213	20.6
Varsinais-Suomi	180,984	-4.5	146,163	-7.8	34,821	12.6
Turku	123,992	-5.9	99,012	-9.0	24,980	8.9
Satakunta	53,971	-0.5	43,108	-0.9	10,863	1.0
Pori	31,804	-1.6	25,992	-4.2	5,812	12.6
Kanta-Häme	62,611	-4.5	55,047	-1.4	7,564	-22.4
Hämeenlinna	33,969	-9.9	29,394	-7.1	4,575	-24.3
Pirkanmaa	234,657	-4.1	199,018	-4.9	35,639	1.0
Tampere	179,454	1.8	148,072	1.6	31,382	2.8
Päijät-Häme	118,570	-4.6	96,457	-5.1	22,113	-2.2
Lahti	43,280	5.0	30,225	7.6	13,055	-0.6
Kymenlaakso	45,428	-2.1	27,825	-3.2	17,603	-0.5
Kouvola	21,004	-4.1	15,105	-5.2	5,899	-1.0
South Karelia	127,732	-6.1	53,883	-2.6	73,849	-8.4
Lappeenranta	74,709	-0.8	40,875	1.0	33,834	-3.0
Etelä-Savo	83,363	-1.7	67,705	0.9	15,658	-11.6
Mikkeli	34,060	-5.9	26,218	-1.1	7,842	-19.0
Pohjois-Savo	173,313	-5.8	144,193	-6.5	29,120	-2.1
Kuopio	119,578	-6.6	98,845	-8.1	20,733	1.3
North Karelia	86,251	0.7	59,941	-6.9	26,310	23.5
Joensuu	46,497	4.8	31,583	-3.3	14,914	27.4
Central Finland	235,129	-14.0	187,240	-16.9	47,889	-0.7
Jyväskylä	98,740	2.1	83,518	1.7	15,222	4.6
South Ostrobothnia	97,500	2.7	93,174	4.4	4,326	-24.2
Seinäjoki	34,863	7.4	32,724	12.1	2,139	-34.2
Ostrobothnia	61,088	-1.7	46,816	-6.2	14,272	16.6
Vaasa	48,552	4.6	36,635	-1.8	11,917	30.4
Central Ostrobothnia	22,920	-4.1	21,053	-4.9	1,867	5.0
Kokkola	18,244	-2.7	16,711	-2.9	1,533	0.3
North Ostrobothnia	281,578	0.8	214,174	0.1	67,404	2.9
Kuusamo	90,338	-0.2	59,038	-7.1	31,300	16.2
Oulu	126,767	2.7	104,409	3.4	22,358	-0.3
Kainuu	212,722	-2.3	181,988	-2.6	30,734	-0.9
Kajaani	19,324	-11.6	16,954	-12.2	2,370	-7.1
Sotkamo	181,579	-0.4	157,152	-0.7	24,427	1.6
Lapland	631,660	-4.2	259,839	-1.7	371,821	-5.9
Rovaniemi	139,636	-1.4	41,163	5.2	98,473	-3.9
Åland	16,939	-11.4	6,785	-23.5	10,154	-1.0
Maarianhamina	13,950	-13.0	6,393	-22.7	7,557	-2.7

Appendix table 5.1. Visitor arrivals and nights spend by country of residence, March 2014

Country of residence	Visitor arrivals in all accommodation establishments	Nights spend in all accommodation establishments	Change of nights spend in all accommodation establishments, %	Nights spend in hotels	Change of nights spend in hotels, %
Total	813,203	1,627,279	-6.3	1,352,167	-6.4
Finland	613,277	1,171,771	-7.7	953,222	-7.8
Foreign countries	199,926	455,508	-2.6	398,945	-2.7
Sweden	19,065	30,897	6.0	29,479	6.2
Germany	16,053	44,349	3.5	40,224	3.5
Russia	50,718	108,827	-14.1	82,875	-19.2
United Kingdom	12,614	30,244	-13.6	27,346	-12.0
United States	5,213	11,862	4.3	11,572	3.6
Norway	7,669	17,019	19.5	14,392	24.5
Netherlands	6,733	18,858	-3.2	15,781	-5.1
Italy	3,722	8,262	-4.2	7,675	-3.7
France	7,604	26,808	-16.2	24,308	-15.7
Japan	9,170	17,569	-15.3	17,078	-15.9
Estonia	6,628	17,104	-0.4	13,845	0.1
Switzerland	3,416	9,966	-10.4	8,118	-10.8
Spain	2,913	7,020	-18.9	6,336	-16.4
China	2,765	6,419	0.5	6,143	1.0

Appendix table 5.2. Visitor arrivals and nights spend by country of residence, January-March 2014

Country of residence	Visitor arrivals in all accommodation establishments	Nights spend in all accommodation establishments	Change of nights spend in all accommodation establishments, %	Nights spend in hotels	Change of nights spend in hotels, %
Total	2,208,603	4,434,464	-2.4	3,741,941	-3.1
Finland	1,593,273	2,958,159	-2.8	2,465,444	-3.7
Foreign countries	615,330	1,476,305	-1.4	1,276,497	-1.9
Sweden	48,403	76,641	0.8	73,765	1.8
Germany	41,506	112,413	-1.9	102,276	-3.2
Russia	197,047	491,801	-5.5	387,455	-8.8
United Kingdom	40,820	115,211	-11.2	99,669	-8.8
United States	13,454	31,459	9.0	30,348	7.4
Norway	16,666	33,586	0.8	29,846	3.2
Netherlands	19,844	59,109	-5.5	46,843	-8.3
Italy	10,018	22,382	-1.5	20,658	-0.9
France	25,278	87,926	-7.1	80,985	-7.5
Japan	27,965	53,397	-13.7	51,788	-14.3
Estonia	18,258	45,445	-3.3	37,385	-1.8
Switzerland	10,701	36,984	-3.6	25,938	-7.4
Spain	8,070	19,032	-17.1	17,443	0.7
China	10,453	18,636	21.8	17,504	20.7

Appendix table 6. Nights spend in all establishments, 2014

Month	Nights spend, total	Change of nights spend, total, %	Nights spend, residents	Change of nights spend, residents, %	Nights spend, non-residents	Change of nights spend, non-residents, %
Total	4,434,464	-2.4	2,958,159	-2.8	1,476,305	-1.4
January	1,385,244	1.8	767,289	1.9	617,955	1.6
February	1,421,941	-1.4	1,019,099	-0.2	402,842	-4.5
March	1,627,279	-6.3	1,171,771	-7.7	455,508	-2.6

Inquiries

Marjut Tuominen 09 1734 3556

Merja Rönkä 09 1734 3209

Director in charge:

Hannele Orjala

liikenne.matkailu@stat.fi

www.stat.fi

Source: Accommodation Statistics. Statistics Finland