

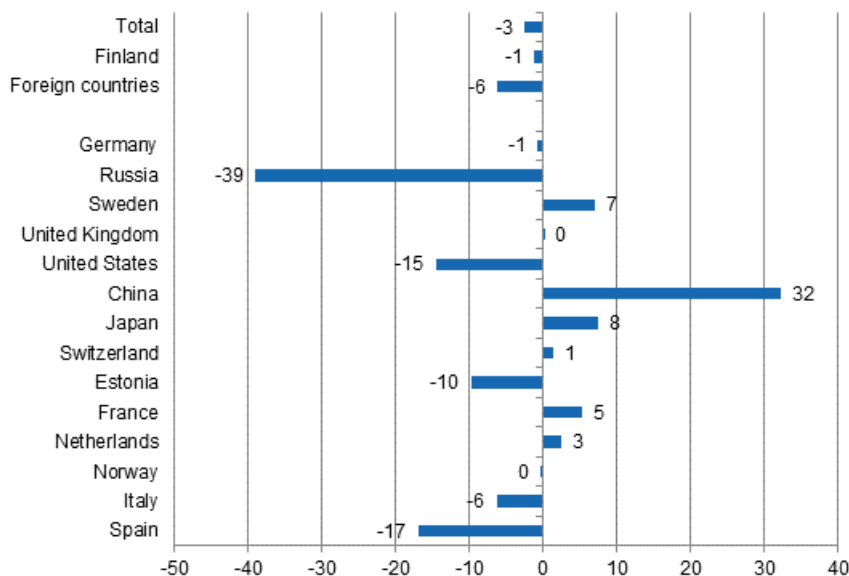
Accommodation statistics

2015, June

Nights spent by foreign tourists in Finland decreased by 6.2 per cent in June

The number of recorded nights spent by foreign tourists at Finnish accommodation establishments in June 2015 was 524,000, which was 6.2 per cent lower than in June 2014. Overnight stays by resident tourists decreased by 1.2 per cent and accommodation establishments recorded 1,503,000 of them. The total number of nights spent at accommodation establishments was 2.0 million, which was 2.5 per cent fewer than twelve months earlier. These figures are preliminary data from Statistics Finland's statistics on accommodation establishments and they have been collected from accommodation establishments with at least 20 beds or caravan pitches with electricity connection.

Change in overnight stays in June 2015/2014, %



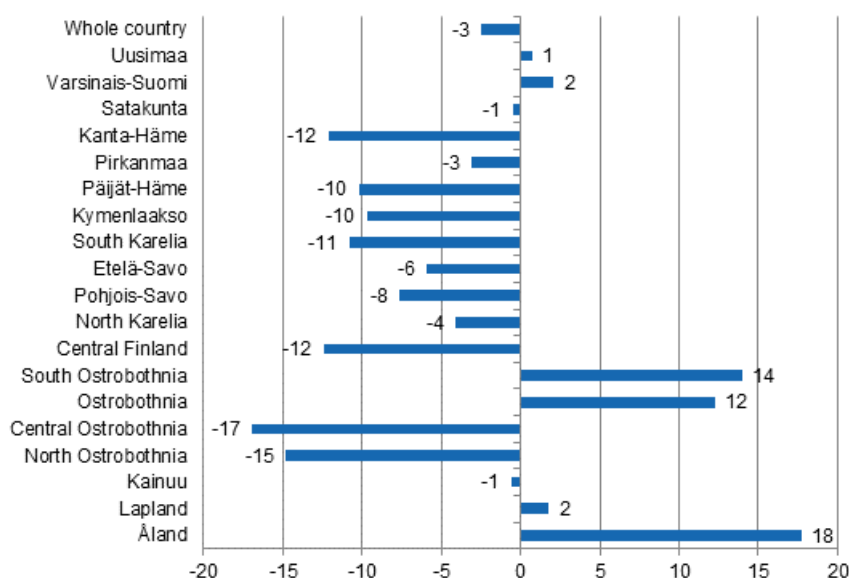
The steep decline in overnight stays by Russian visitors continued in June 2015. Altogether, 63,000 overnight stays were recorded for them at Finnish accommodation establishments, which was 39.0 per cent lower than in June 2014. Good 61,000 nights spent were recorded for Swedish visitors, which was

7.1 per cent more than twelve months earlier. Russians were the second largest and Swedes the third largest group of foreign tourists in June. German tourists were the biggest group of tourists and they had 69,000 overnight stays at accommodation establishments, which was 0.8 per cent lower than in June 2014.

British visitors came next with close on 29,000 nights spent, with a slight increase of 0.2 per cent from the previous year. A total of 28,000 overnight stays were recorded for visitors from the United States, and the drop from June 2014 amounted to 14.5 per cent. The recorded number of overnight stays for Chinese visitors was 25,000. Among the biggest countries of inbound tourism to Finland, the biggest growth in overnight stays was recorded for Chinese visitors; 32.4 per cent.

By region, the total number of overnight stays increased in June most in Åland, up by 17.7 per cent. The number of overnight stays grew by 14.0 per cent in South Ostrobothnia and by 12.3 per cent in Ostrobothnia. The biggest decreases in overnight stays were recorded in Central Ostrobothnia, 16.9 per cent, and in North Ostrobothnia, 14.8 per cent. In the whole country, overnight stays decreased by 2.5 per cent from the corresponding period last year.

Change in overnight stays in June by region 2015 / 2014, %



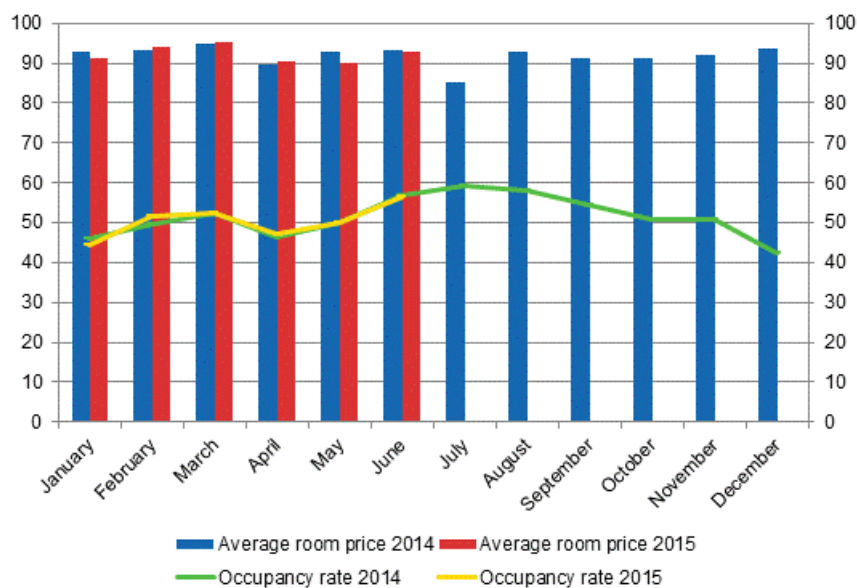
Slightly fewer nights were spent at hotels than one year earlier.

In June 2015, the total number of nights spent in hotels was just under 1.5 million, which was 0.7 per cent lower than twelve months earlier. Overnight stays by resident tourists increased by 1.6 per cent and accommodation establishments recorded 1,036,000 of them. By contrast, overnight stays by foreign tourists decreased by 5.8 per cent year-on-year and hotels recorded good 423,000 of them in June 2015.

The occupancy rate of hotel rooms in the whole country was 56.6 per cent in June. One year earlier, it was nearly the same, 56.7 per cent. Among the regions, the highest occupancy rates of hotel rooms were measured in Uusimaa, 72.2 per cent, and Varsinais-Suomi, 65.9 per cent. In Vantaa, the hotel room occupancy rate rose to 76.2 per cent and in Turku to 70.7 per cent. The hotel room occupancy rate in Helsinki was 78.5 per cent. The biggest change in the hotel room occupancy rate occurred in Seinäjoki, up by 10.3 percentage points.

In June, the realised average price of a hotel room was EUR 92.75 per day for the whole country. Twelve months previously, it was EUR 93.21.

Hotel room occupancy rate and the monthly average price



Total number of nights spent at all accommodation establishments fell by 2 per cent in January to June

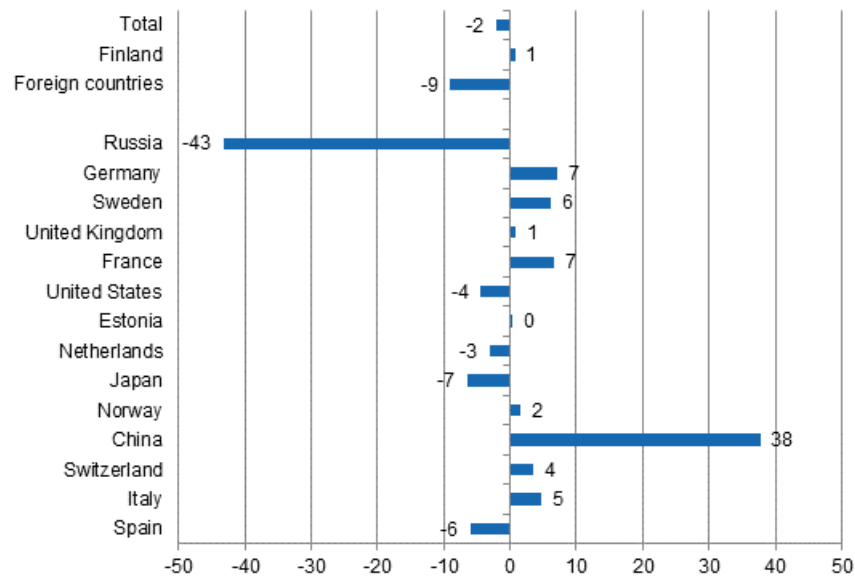
Between January and June 2015, the number of nights spent at accommodation establishments in Finland was around nine million. This was 2.2 per cent lower than in the corresponding period one year earlier. The number of nights spent by resident tourists increased by 0.7 per cent while that of nights spent by foreign tourists decreased by 9.0 per cent. In all, 6.5 million overnight stays were recorded for resident tourists and 2.5 million for non-resident tourists at accommodation establishments.

Between January and June 2015, the number of nights spent by Russian visitors at accommodation establishments in Finland totalled 422,000, which was 43.3 per cent down on the respective time period of last year. They were still by far the largest group of foreign visitors in January to June, as German visitors came next with good 253,000 overnight stays. Overnight stays of Germans went up by 7.1 per cent. In January to June, around 224,000 overnight stays were recorded for Swedish visitors and 192,000 for British tourists. The overnight stays of visitors from Sweden increased by 6.2 per cent and those of visitors from Great Britain by nearly one per cent from the previous year's corresponding time period.

The number of overnight stays for French visitors was 130,000 in January to June. Visitors from the United States and Estonia accumulated around 91,000 overnight stays in January to June. Overnight stays by Estonian tourists remained more or less at last year's level, while those by tourists from the United States declined by 4.4 per cent year-on-year. Among tourists from the Mediterranean countries, overnight stays of Italian visitors increased by 4.8 per cent, whereas those of Spanish visitors decreased by 6.0 per cent from the corresponding period last year. Overnight stays by Italian tourists rose to 49,000 while those by Spanish visitors remained at 40,000.

Among the most important countries of inbound tourism to Finland, overnight stays by Chinese visitors increased most, or by 37.9 per cent, during the January to June period. The number of overnight stays by Chinese visitors rose to good 70,000.

Change in overnight stays in January-June 2015/2014, %



Contents

Tables

Appendix tables

Appendix table 1.1. Capacity and its utilization, June 2015.....	6
Appendix table 1.2. Capacity and its utilization, January-June 2015.....	7
Appendix table 2.1. Nights spend in all establishments, June 2015.....	8
Appendix table 2.2. Nights spend in all establishments, January-June 2015.....	9
Appendix table 3.1. Hotel capacity and capacity utilization, June 2015.....	10
Appendix table 3.2. Hotel capacity and capacity utilization, January-June 2015.....	11
Appendix table 4.1. Nights spend in hotels, June 2015.....	12
Appendix table 4.2. Nights spend in hotels, January-June 2015.....	13
Appendix table 5.1. Visitor arrivals and nights spend by country of residence, June 2015.....	14
Appendix table 5.2. Visitor arrivals and nights spend by country of residence, January-June 2015.....	14
Appendix table 6. Nights spend in all establishments, 2015.....	15

Appendix tables

Appendix table 1.1. Capacity and its utilization, June 2015

Region	Number of establishments	Number of bedrooms	Occupancy rate of bedrooms, %	Change of the occupancy rate compared to previous year, %-units	Average price of nights spend, in euros (incl. VAT 10 %)
Whole country	1,357	65,420	50.8	-0.3	47.32
Mainland Finland	1,283	63,691	50.9	-0.5	47.43
Uusimaa	152	15,447	70.3	-1.2	65.82
Varsinais-Suomi	91	4,060	58.9	3.5	48.44
Satakunta	47	1,692	44.4	-0.0	47.91
Kanta-Häme	35	1,755	36.6	-3.6	38.85
Pirkanmaa	80	4,664	53.4	-0.7	47.02
Päijät-Häme	42	2,153	36.6	-10.0	35.91
Kymenlaakso	34	1,282	41.8	-8.3	32.86
South Karelia	44	2,162	45.7	-13.4	38.57
Etelä-Savo	105	3,256	40.9	1.1	34.08
Pohjois-Savo	59	2,869	48.1	-2.0	44.35
North Karelia	61	1,769	45.1	-1.6	43.70
Central Finland	62	3,531	51.8	4.4	44.56
South Ostrobothnia	53	2,021	51.6	7.7	40.38
Ostrobothnia	41	1,583	50.2	0.4	40.67
Central Ostrobothnia	21	707	38.2	-4.3	44.44
North Ostrobothnia	111	4,709	43.9	-1.8	35.28
Kainuu	53	2,359	40.8	2.4	20.00
Lapland	192	7,672	31.1	1.5	33.46
Åland	74	1,729	49.7	5.5	¹⁾ ..

1) [...] Data too uncertain for presentation.

Appendix table 1.2. Capacity and its utilization, January-June 2015

Region	Number of establishments	Number of bedrooms	Occupancy rate of bedrooms, %	Change of the occupancy rate compared to previous year, %-units	Average price of nights spend, in euros (incl. VAT 10 %)
Whole country	1,146	59,874	46.5	-0.1	53.41
Mainland Finland	1,103	58,696	46.8	-0.1	53.46
Uusimaa	143	14,926	59.3	-0.4	67.37
Varsinais-Suomi	69	3,671	46.5	0.7	52.04
Satakunta	41	1,491	37.8	2.2	56.80
Kanta-Häme	32	1,566	33.2	-0.6	45.17
Pirkanmaa	72	4,412	46.6	1.3	52.98
Päijät-Häme	37	1,985	37.3	-5.1	45.84
Kymenlaakso	30	1,170	36.0	-2.4	47.15
South Karelia	37	1,801	41.4	-5.3	47.52
Etelä-Savo	86	2,423	32.9	-2.2	40.03
Pohjois-Savo	53	2,632	44.3	-0.3	48.36
North Karelia	50	1,500	42.0	0.6	51.57
Central Finland	50	3,054	45.7	0.3	47.15
South Ostrobothnia	46	1,735	41.6	3.4	41.27
Ostrobothnia	32	1,402	44.4	0.6	53.79
Central Ostrobothnia	15	565	37.8	-4.4	55.42
North Ostrobothnia	98	4,423	46.5	2.0	44.16
Kainuu	45	2,220	41.5	0.9	33.56
Lapland	167	7,723	43.1	-0.7	48.18
Åland	44	1,178	31.0	3.0	1) ..

1) [...] Data too uncertain for presentation.

Appendix table 2.1. Nights spend in all establishments, June 2015

Region	Nights spend, total	Change of nights spend, total, %	Nights spend, residents	Change of nights spend, residents, %	Nights spend, non-residents	Change of nights spend, non-residents, %
Whole country	2,027,208	-2.5	1,502,938	-1.2	524,270	-6.2
Mainland Finland	1,955,421	-3.2	1,466,434	-1.8	488,987	-7.1
Uusimaa	529,542	0.7	278,385	4.4	251,157	-3.0
Varsinais-Suomi	139,500	2.1	107,803	-1.2	31,697	15.0
Satakunta	46,190	-0.5	39,940	0.2	6,250	-4.5
Kanta-Häme	39,154	-12.1	35,083	-14.1	4,071	10.7
Pirkanmaa	146,381	-3.1	121,752	-3.2	24,629	-2.6
Päijät-Häme	52,334	-10.2	43,872	-9.7	8,462	-12.8
Kymenlaakso	38,840	-9.7	29,432	-6.1	9,408	-19.3
South Karelia	62,895	-10.8	45,195	6.9	17,700	-37.3
Etelä-Savo	92,383	-5.9	72,875	-2.8	19,508	-15.7
Pohjois-Savo	81,142	-7.6	71,760	-4.6	9,382	-25.3
North Karelia	55,599	-4.1	48,435	6.2	7,164	-41.9
Central Finland	131,232	-12.4	118,626	-12.1	12,606	-15.3
South Ostrobothnia	96,772	14.0	93,755	14.0	3,017	14.8
Ostrobothnia	55,517	12.3	48,329	17.2	7,188	-12.2
Central Ostrobothnia	17,455	-16.9	16,274	-12.3	1,181	-51.8
North Ostrobothnia	145,992	-14.8	128,029	-15.3	17,963	-10.6
Kainuu	77,762	-0.6	72,958	1.4	4,804	-23.4
Lapland	146,731	1.8	93,931	2.2	52,800	1.1
Åland	71,787	17.7	36,504	28.8	35,283	8.1

Appendix table 2.2. Nights spend in all establishments, January-June 2015

Region	Nights spend, total	Change of nights spend, total, %	Nights spend, residents	Change of nights spend, residents, %	Nights spend, non-residents	Change of nights spend, non-residents, %
Whole country	9,016,299	-2.2	6,522,351	0.7	2,493,948	-9.0
Mainland Finland	8,865,581	-2.4	6,452,308	0.6	2,413,273	-9.5
Uusimaa	2,399,135	0.6	1,341,822	4.4	1,057,313	-3.9
Varsinais-Suomi	507,349	-0.8	408,350	-0.1	98,999	-3.3
Satakunta	155,380	-0.8	125,960	-2.1	29,420	5.5
Kanta-Häme	165,134	-6.0	148,429	-6.2	16,705	-4.2
Pirkanmaa	647,391	2.6	559,412	5.1	87,979	-11.0
Päijät-Häme	255,107	-11.6	217,449	-9.8	37,658	-20.6
Kymenlaakso	140,535	-3.9	102,222	5.8	38,313	-22.8
South Karelia	264,574	-14.7	174,838	16.8	89,736	-44.1
Etelä-Savo	280,404	-8.3	223,405	-0.3	56,999	-30.1
Pohjois-Savo	379,060	-2.1	330,583	1.0	48,477	-19.3
North Karelia	207,345	-5.6	164,588	-0.2	42,757	-21.9
Central Finland	485,472	-7.9	422,798	-6.2	62,674	-18.1
South Ostrobothnia	286,230	2.2	275,191	2.7	11,039	-9.2
Ostrobothnia	185,025	7.1	151,296	9.0	33,729	-0.6
Central Ostrobothnia	62,941	-16.1	57,244	-14.4	5,697	-30.2
North Ostrobothnia	761,010	-1.4	629,629	-0.5	131,381	-5.8
Kainuu	484,061	-1.6	446,728	1.3	37,333	-27.0
Lapland	1,199,428	-3.7	672,364	-3.9	527,064	-3.4
Åland	150,718	13.0	70,043	16.3	80,675	10.3

Appendix table 3.1. Hotel capacity and capacity utilization, June 2015

Region / municipality	Number of establishments	Number of bedrooms	Occupancy rate of bedrooms, %	Change compared to previous year, %-units	Room price, euros (incl. VAT 10 %)	¹⁾ RevPAR, euros (incl. VAT 10 %)
Whole country	628	51,723	56.6	-0.1	92.75	52.46
Mainland Finland	610	50,789	56.4	-0.2	92.68	52.29
Uusimaa	111	14,663	72.2	-0.3	106.48	76.88
Espoo	11	1,196	61.2	-5.0	86.21	52.75
Helsinki	52	8,848	78.5	0.6	113.41	89.00
Vantaa	11	2,237	76.2	2.2	96.21	73.28
Varsinais-Suomi	42	3,071	65.9	2.9	93.27	61.47
Turku	19	2,041	70.7	1.8	92.95	65.72
Satakunta	27	1,264	47.6	-0.1	88.85	42.25
Pori	10	671	50.2	0.2	85.50	42.88
Kanta-Häme	18	1,366	42.9	-4.1	74.81	32.11
Hämeenlinna	8	671	40.0	1.4	84.12	33.63
Pirkanmaa	41	3,734	57.8	-0.6	95.45	55.16
Tampere	24	2,829	62.2	-1.8	97.83	60.87
Päijät-Häme	15	1,765	39.8	-10.5	83.20	33.08
Lahti	6	641	46.4	-2.4	82.70	38.37
Kymenlaakso	18	975	41.9	-10.8	87.76	36.80
Kouvola	7	444	40.6	-9.3	82.42	33.47
South Karelia	19	1,574	48.4	-17.3	87.39	42.32
Lappeenranta	9	888	57.5	-20.5	79.42	45.65
Etelä-Savo	37	2,164	43.4	0.8	77.18	33.49
Mikkeli	9	630	50.9	1.3	84.76	43.12
Pohjois-Savo	31	2,388	51.0	-1.2	89.07	45.42
Kuopio	16	1,424	57.1	1.1	97.11	55.43
North Karelia	23	1,283	50.6	-2.4	89.94	45.50
Joensuu	8	682	57.9	-5.3	87.89	50.91
Central Finland	28	2,825	56.4	2.3	88.05	49.68
Jyväskylä	13	1,586	58.5	3.3	85.25	49.91
South Ostrobothnia	23	1,508	61.0	8.6	81.69	49.87
Seinäjoki	7	602	63.6	10.3	90.99	57.88
Ostrobothnia	22	1,243	58.4	-0.3	97.85	57.18
Vaasa	8	811	67.4	1.8	101.72	68.60
Central Ostrobothnia	9	525	43.3	-5.4	83.35	36.11
Kokkola	5	408	47.6	-9.8	83.44	39.75
North Ostrobothnia	48	3,352	51.2	0.5	82.12	42.09
Kuusamo	9	726	25.7	1.6	60.50	15.57
Oulu	11	1,441	69.6	3.2	87.96	61.19
Kainuu	20	1,765	47.4	2.2	48.07	22.76
Kajaani	6	409	41.5	3.6	77.66	32.19
Sotkamo	6	1,098	53.8	1.4	37.69	20.29
Lapland	78	5,324	36.5	3.8	68.46	25.00
Rovaniemi	12	1,242	56.6	2.9	71.43	40.45
Åland	18	934	64.2	6.9
Maarianhamina	8	570	78.2	4.5

1) RevPar = Average accommodation sales revenue per available room. Calculation formula: RevPar = Average room price * Occupancy rate. [...] Data too uncertain for presentation.

Appendix table 3.2. Hotel capacity and capacity utilization, January-June 2015

Region / municipality	Number of establishments	Number of bedrooms	Occupancy rate of bedrooms, %	Change compared to previous year, %-units	Room price, euros (incl. VAT 10 %)	¹⁾ RevPAR, euros (incl. VAT 10 %)
Whole country	610	50,494	50.4	0.2	92.45	46.56
Mainland Finland	597	49,763	50.5	0.2	92.45	46.71
Uusimaa	112	14,363	60.2	-0.2	100.81	60.70
Espoo	11	1,195	51.9	-0.4	85.17	44.22
Helsinki	52	8,547	64.2	-0.7	106.02	68.11
Vantaa	11	2,236	68.9	-0.8	99.01	68.23
Varsinais-Suomi	38	2,964	51.0	0.8	85.44	43.54
Turku	19	2,038	53.5	0.4	87.21	46.66
Satakunta	25	1,149	44.3	3.3	83.22	36.89
Pori	9	645	45.8	4.2	82.89	37.93
Kanta-Häme	18	1,329	36.7	-0.6	75.65	27.80
Hämeenlinna	8	707	34.8	0.2	87.32	30.38
Pirkanmaa	41	3,769	49.3	1.7	93.93	46.32
Tampere	25	2,959	52.3	0.2	95.40	49.93
Päijät-Häme	15	1,750	39.8	-5.1	82.26	32.73
Lahti	6	644	45.8	-0.5	87.92	40.25
Kymenlaakso	16	913	39.1	-0.7	87.21	34.07
Kouvola	6	432	38.7	0.5	81.43	31.53
South Karelia	17	1,374	44.6	-7.7	91.56	40.81
Lappeenranta	8	773	54.8	-3.4	83.13	45.56
Etelä-Savo	30	1,648	37.5	-1.5	73.18	27.41
Mikkeli	8	565	44.4	-0.4	79.65	35.36
Pohjois-Savo	31	2,335	46.3	0.2	86.63	40.14
Kuopio	16	1,414	52.1	0.8	91.92	47.89
North Karelia	22	1,211	46.5	0.4	89.45	41.55
Joensuu	7	623	58.5	0.9	89.66	52.45
Central Finland	27	2,662	48.9	0.4	86.03	42.10
Jyväskylä	12	1,408	51.5	0.2	88.39	45.53
South Ostrobothnia	22	1,434	47.6	3.1	75.65	36.00
Seinäjoki	6	560	52.2	3.9	83.75	43.71
Ostrobothnia	22	1,242	47.9	1.5	88.17	42.24
Vaasa	8	802	55.0	1.7	90.57	49.81
Central Ostrobothnia	9	486	40.0	-4.6	84.02	33.58
Kokkola	5	369	44.5	-7.1	86.21	38.38
North Ostrobothnia	48	3,403	51.7	3.8	85.50	44.16
Kuusamo	11	763	41.7	1.5	97.69	40.77
Oulu	12	1,532	62.9	5.0	88.71	55.76
Kainuu	20	1,765	45.2	-0.2	71.97	32.53
Kajaani	6	409	36.7	2.0	78.62	28.87
Sotkamo	6	1,101	53.2	-0.9	70.80	37.66
Lapland	85	5,967	47.9	0.1	99.84	47.79
Rovaniemi	12	1,257	58.9	-0.8	91.55	53.96
Åland	13	731	39.0	4.5
Maarianhamina	6	446	51.9	5.5

1) RevPar = Average accommodation sales revenue per available room. Calculation formula: RevPar = Average room price
 *Occupancy rate[...] Data too uncertain for presentation.

Appendix table 4.1. Nights spend in hotels, June 2015

Region / municipality	Nights spend, total	Change of nights spend, total, %	Nights spend, residents	Change of nights spend, residents, %	Nights spend, non-residents	Change of nights spend, non-residents, %
Whole country	1,459,343	-0.7	1,035,991	1.6	423,352	-5.8
Mainland Finland	1,423,634	-1.1	1,015,816	1.1	407,818	-6.4
Uusimaa	482,541	1.9	245,182	6.8	237,359	-2.7
Espoo	33,507	-2.9	19,958	13.9	13,549	-20.3
Helsinki	312,901	2.6	130,928	5.9	181,973	0.4
Vantaa	78,513	4.3	45,796	10.8	32,717	-3.7
Varsinais-Suomi	99,984	3.6	76,647	0.6	23,337	14.7
Turku	70,680	1.2	54,683	0.3	15,997	4.3
Satakunta	26,799	-5.7	21,745	-7.6	5,054	3.3
Pori	15,973	4.2	13,862	1.8	2,111	22.6
Kanta-Häme	29,478	-5.5	25,618	-9.8	3,860	37.1
Hämeenlinna	14,149	-1.1	11,879	-5.7	2,270	32.8
Pirkanmaa	111,194	-1.4	91,346	-1.4	19,848	-1.5
Tampere	87,365	4.2	68,784	5.5	18,581	-0.2
Päijät-Häme	35,826	-13.0	29,573	-14.1	6,253	-6.9
Lahti	12,999	-11.5	9,372	-20.3	3,627	23.4
Kymenlaakso	17,994	-25.2	13,212	-22.7	4,782	-31.5
Kouvola	8,429	-19.7	7,081	-10.4	1,348	-48.0
South Karelia	44,807	-16.6	31,243	1.4	13,564	-40.8
Lappeenranta	28,352	-8.7	21,674	5.8	6,678	-36.9
Etelä-Savo	48,290	-3.2	40,248	1.1	8,042	-20.1
Mikkeli	16,698	1.0	12,345	5.2	4,353	-9.2
Pohjois-Savo	63,569	0.3	55,916	0.6	7,653	-2.4
Kuopio	42,296	3.7	37,223	4.2	5,073	-0.4
North Karelia	35,142	0.6	31,341	17.6	3,801	-54.1
Joensuu	18,150	0.7	15,765	30.2	2,385	-59.7
Central Finland	86,111	-4.7	74,902	-2.7	11,209	-16.1
Jyväskylä	42,246	1.8	34,377	7.8	7,869	-18.0
South Ostrobothnia	56,429	13.1	54,309	13.0	2,120	15.7
Seinäjoki	17,616	23.8	16,159	21.5	1,457	56.0
Ostrobothnia	33,973	5.7	28,604	12.6	5,369	-20.3
Vaasa	26,079	7.3	21,612	14.7	4,467	-18.3
Central Ostrobothnia	10,430	-16.9	9,494	-12.4	936	-45.4
Kokkola	8,785	-19.3	7,958	-14.2	827	-48.5
North Ostrobothnia	82,428	-9.3	68,981	-9.5	13,447	-7.9
Kuusamo	11,451	5.2	10,323	14.5	1,128	-39.6
Oulu	45,973	-7.9	36,866	-4.5	9,107	-19.5
Kainuu	61,763	1.2	59,354	3.1	2,409	-30.6
Kajaani	7,190	5.0	6,194	5.8	996	0.0
Sotkamo	51,390	0.5	50,404	2.4	986	-49.1
Lapland	96,876	3.3	58,101	5.9	38,775	-0.3
Rovaniemi	35,229	11.8	21,292	27.7	13,937	-6.0
Åland	35,709	21.1	20,175	30.1	15,534	11.1
Maarianhamina	24,654	24.6	14,714	26.4	9,940	22.1

Appendix table 4.2. Nights spend in hotels, January-June 2015

Region / municipality	Nights spend, total	Change of nights spend, total, %	Nights spend, residents	Change of nights spend, residents, %	Nights spend, non-residents	Change of nights spend, non-residents, %
Whole country	7,375,400	-1.4	5,248,542	2.2	2,126,858	-9.1
Mainland Finland	7,285,089	-1.5	5,204,127	2.1	2,080,962	-9.5
Uusimaa	2,250,592	0.6	1,256,005	5.2	994,587	-4.8
Espoo	160,145	-0.1	100,644	12.7	59,501	-16.2
Helsinki	1,419,150	-0.2	681,484	2.6	737,666	-2.6
Vantaa	409,278	0.8	259,900	8.9	149,378	-10.7
Varsinais-Suomi	424,357	-0.0	343,746	1.1	80,611	-4.4
Turku	298,813	-0.3	241,226	1.3	57,587	-6.2
Satakunta	121,628	-1.6	94,595	-4.3	27,033	9.1
Pori	73,360	6.3	60,367	4.1	12,993	17.9
Kanta-Häme	142,950	-0.7	126,949	-1.2	16,001	3.9
Hämeenlinna	73,297	-2.7	65,352	-0.8	7,945	-16.1
Pirkanmaa	540,244	3.9	463,280	6.8	76,964	-10.8
Tampere	431,001	6.6	359,033	10.1	71,968	-8.0
Päijät-Häme	208,517	-11.7	177,758	-9.9	30,759	-20.6
Lahti	75,307	-9.8	55,151	-10.6	20,156	-7.6
Kymenlaakso	88,695	-13.0	63,475	-4.5	25,220	-28.9
Kouvola	43,245	-5.8	34,749	0.6	8,496	-25.3
South Karelia	210,432	-18.4	139,298	16.8	71,134	-48.7
Lappeenranta	137,359	-9.3	102,980	18.9	34,379	-47.0
Etelä-Savo	181,708	-5.4	158,062	-0.6	23,646	-28.4
Mikkeli	70,859	-3.4	58,912	3.6	11,947	-27.7
Pohjois-Savo	329,455	0.5	292,725	3.1	36,730	-16.4
Kuopio	225,179	3.8	199,908	7.2	25,271	-16.9
North Karelia	166,024	-1.2	132,703	5.6	33,321	-21.1
Joensuu	91,394	0.3	69,943	8.3	21,451	-19.2
Central Finland	414,069	-5.9	355,848	-3.2	58,221	-19.2
Jyväskylä	196,266	-0.9	168,750	1.6	27,516	-13.9
South Ostrobothnia	216,773	1.9	207,942	2.3	8,831	-6.8
Seinäjoki	74,221	1.4	68,221	0.2	6,000	16.5
Ostrobothnia	148,389	4.6	116,987	5.8	31,402	0.2
Vaasa	110,250	1.9	83,739	1.7	26,511	2.4
Central Ostrobothnia	48,745	-13.1	44,695	-11.6	4,050	-26.6
Kokkola	39,917	-14.1	36,443	-12.1	3,474	-30.5
North Ostrobothnia	535,407	2.2	437,479	3.7	97,928	-4.0
Kuusamo	136,126	0.8	104,891	8.8	31,235	-19.2
Oulu	265,779	4.5	224,533	7.6	41,246	-9.8
Kainuu	364,514	-0.5	338,579	2.8	25,935	-30.3
Kajaani	38,787	0.4	34,503	0.2	4,284	1.8
Sotkamo	308,680	0.1	291,653	3.9	17,027	-38.3
Lapland	892,590	-3.3	454,001	-2.9	438,589	-3.7
Rovaniemi	220,589	5.6	92,495	15.4	128,094	-0.5
Åland	90,311	14.1	44,415	14.0	45,896	14.2
Maarianhamina	68,218	18.8	35,781	16.7	32,437	21.2

Appendix table 5.1. Visitor arrivals and nights spend by country of residence, June 2015

Country of residence	Visitor arrivals in all accommodation establishments	Nights spend in all accommodation establishments	Change of nights spend in all accommodation establishments, %	Nights spend in hotels	Change of nights spend in hotels, %
Total	1,107,199	2,027,208	-2.5	1,459,343	-0.7
Finland	824,141	1,502,938	-1.2	1,035,991	1.6
Foreign countries	283,058	524,270	-6.2	423,352	-5.8
Sweden	33,311	61,441	7.1	41,587	5.0
Germany	41,987	69,121	-0.8	52,121	-1.0
Russia	32,825	62,931	-39.0	43,437	-39.3
United Kingdom	13,899	28,558	0.2	24,513	-1.5
United States	13,190	27,983	-14.5	26,891	-14.7
Norway	8,920	15,240	-0.3	12,124	-3.1
Netherlands	8,937	15,468	2.5	11,119	2.2
Italy	5,466	10,400	-6.3	8,839	-7.8
France	8,474	15,480	5.3	12,673	4.2
Japan	10,470	18,070	7.5	17,529	7.4
Estonia	7,031	15,508	-9.8	9,725	-10.8
Switzerland	8,754	15,626	1.4	11,460	-0.8
Spain	4,233	8,081	-16.9	7,390	-3.1
China	17,037	25,271	32.4	24,986	33.7

Appendix table 5.2. Visitor arrivals and nights spend by country of residence, January-June 2015

Country of residence	Visitor arrivals in all accommodation establishments	Nights spend in all accommodation establishments	Change of nights spend in all accommodation establishments, %	Nights spend in hotels	Change of nights spend in hotels, %
Total	4,754,970	9,016,299	-2.2	7,375,400	-1.4
Finland	3,607,911	6,522,351	0.7	5,248,542	2.2
Foreign countries	1,147,059	2,493,948	-9.0	2,126,858	-9.1
Sweden	132,119	224,310	6.2	192,449	6.1
Germany	116,248	253,169	7.1	219,410	7.7
Russia	183,804	422,413	-43.3	313,545	-45.5
United Kingdom	76,574	192,106	0.8	166,068	0.1
United States	42,494	91,567	-4.4	88,613	-4.0
Norway	39,385	77,834	1.6	65,268	-2.6
Netherlands	37,024	88,972	-3.1	72,803	-1.1
Italy	22,867	49,204	4.8	44,738	5.9
France	46,011	130,097	6.7	118,019	7.1
Japan	44,469	80,590	-6.5	78,319	-5.9
Estonia	37,013	90,920	0.4	65,139	-4.3
Switzerland	26,332	67,169	3.5	48,455	-0.4
Spain	17,641	40,224	-6.0	36,781	-2.8
China	43,138	70,403	37.9	68,443	39.7

Appendix table 6. Nights spend in all establishments, 2015

Month	Nights spend, total	Change of nights spend, total, %	Nights spend, residents	Change of nights spend, residents, %	Nights spend, non-residents	Change of nights spend, non-residents, %
Total	9,016,299	-2.2	6,522,351	0.7	2,493,948	-9.0
January	1,276,236	-7.9	788,300	2.9	487,936	-21.2
February	1,448,043	1.6	1,053,198	3.1	394,845	-2.0
March	1,574,555	-3.1	1,162,155	-0.4	412,400	-9.8
April	1,345,270	-0.3	1,056,742	0.9	288,528	-4.7
May	1,344,987	-0.4	959,018	0.8	385,969	-3.4
June	2,027,208	-2.5	1,502,938	-1.2	524,270	-6.2

Inquiries

Taru Tamminen 029 551 2243

Kari Keränen 029 551 3208

Director in charge:

Hannele Orjala

liikenne.matkailu@stat.fi

www.stat.fi

Source: Accommodation Statistics. Statistics Finland