

Accommodation statistics

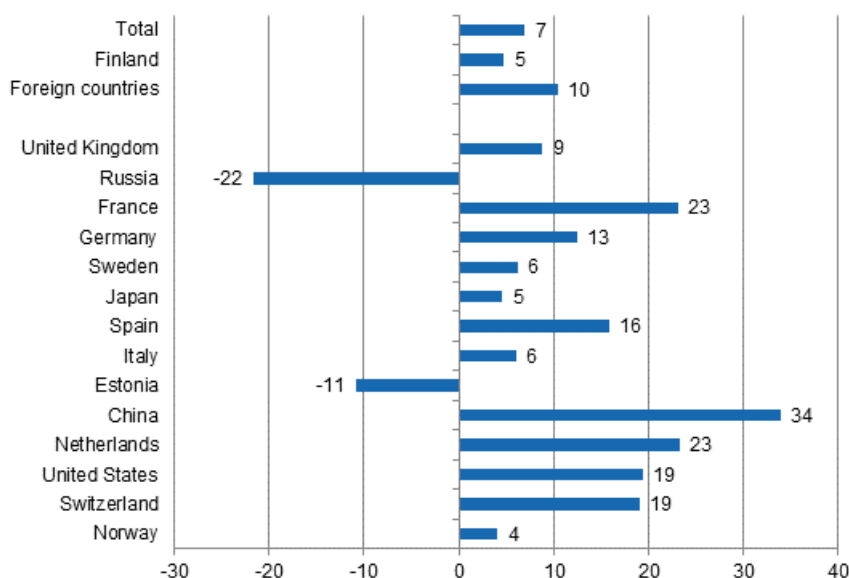
2015, December

Nights spent by foreign tourists in Finland up by 10.4 per cent in December

Corrected on 18 February 2016. The corrections are indicated in red.

The number of recorded nights spent by foreign tourists at Finnish accommodation establishments in December 2015 was nearly 553,000, which was 10.4 per cent more than in December 2014. Overnight stays by resident tourists increased by 4.7 per cent and accommodation establishments recorded nearly 836,000 of them. The total number of nights spent at accommodation establishments rose to almost 1.4 million, which was 6.9 per cent higher than in the year before. These figures are preliminary data from Statistics Finland's statistics on accommodation establishments and they have been collected from accommodation establishments with at least 20 beds or caravan pitches with electricity connection.

Change in overnight stays in December 2015/2014, %



The World Junior Championship in ice hockey in Helsinki swelled the number of overnight stays by foreign tourists in December 2015. With the exception of Russia, overnight stays by tourists from all

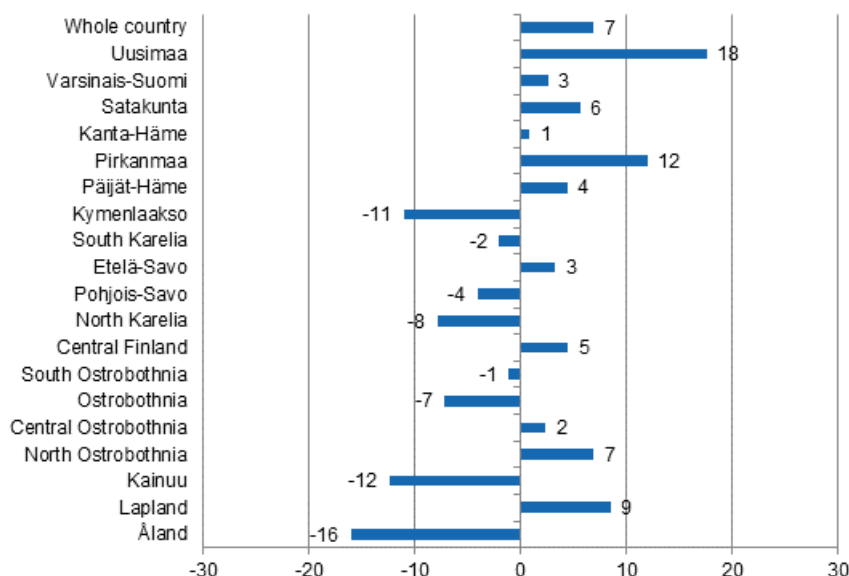
known ice hockey countries increased in December. Overnight stays by Russians decreased by only good one-fifth from December 2014. Overnight stays by Swiss and Austrian tourists went up by around one-fifth from the previous year and the number of overnight stays by visitors from the American continent, from both the United States and Canada, grew strongly. The effect of the tournament was particularly visible in Uusimaa and Pirkanmaa. In Uusimaa, overnight stays by foreign visitors increased by 24.8 per cent and those by resident tourists by 12.6 per cent. In Pirkanmaa, overnight stays by foreign visitors grew by 74.0 per cent. In all, 374,000 nights spent were recorded at accommodation establishments in Uusimaa, which was 17.7 per cent more than twelve months earlier. Overnight stays in Pirkanmaa went up by 12.0 per cent.

In addition to the World Junior Championship tournament, Christmas travel to Lapland increased the number of foreign tourists. Good 264,000 overnight stays were recorded for them at accommodation establishments in Lapland, which was 10.3 per cent more than one year before. British visitors had good 123,000 overnight stays at accommodation establishments in Lapland, which was 9.3 per cent up on one year before. Of the Mediterranean countries, overnight stays by French, Spanish and Italian visitors were also directed to Lapland. French visitors had good 25,000 overnight stays, Spanish visitors nearly 11,000 and Italians around 8,000 overnights at accommodation establishments in Lapland.

In the whole country, British visitors were the biggest foreign tourist group in December with nearly 148,000 overnight stays. The number was 8.8 per cent higher than in December 2014. Russian visitors came next with 59,000 overnight stays and Germans were third with good 32,000 overnights. Overnight stays by German tourists increased by 12.5 per cent from the previous year. Among the most important countries of inbound tourism to Finland, overnight stays by Chinese visitors increased most, by 34.0 per cent. Good 13,000 overnight stays at Finnish accommodation establishments were recorded for them.

By region, the total number of overnight stays increased in December most in Uusimaa, up by 17.7 per cent. The number of overnight stays grew by 12.0 per cent in Pirkanmaa and by 8.5 per cent in Lapland. The biggest decreases in overnight stays were recorded in Åland, 16.0 per cent, and in Kainuu, 12.4 per cent, and in Kymenlaakso, 11.0 per cent. In the whole country, overnight stays increased by 6.9 per cent from December 2014.

Change in overnight stays in December by region 2015 / 2014, %



Overnight stays in hotels increased by 9.0 per cent

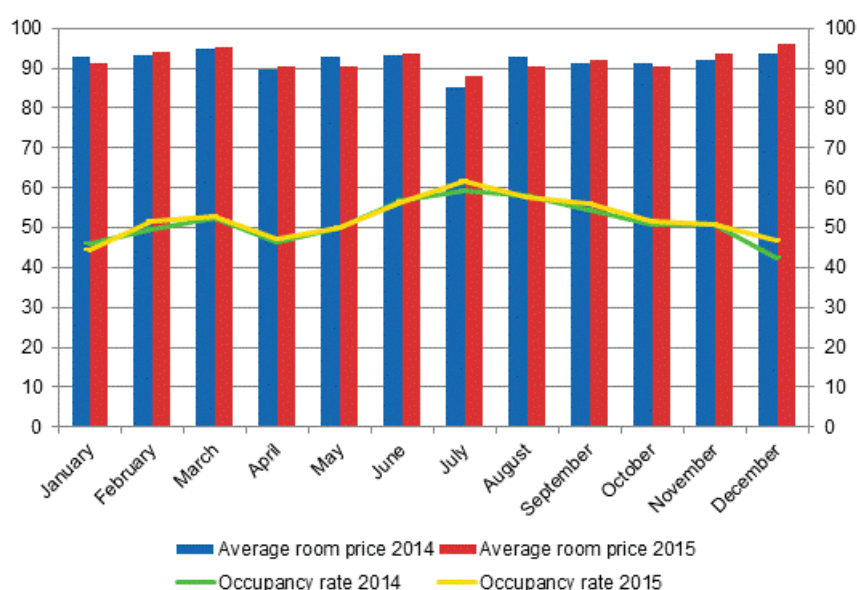
In December 2015, the total number of nights spent in hotels was good 1.2 million, which was 9.0 per cent higher than twelve months earlier. Overnight stays by resident tourists increased by 6.4 per cent from

the year before and hotels recorded a total of good 712,000 of them in December 2015. Overnight stays by foreign tourists increased by 13.0 per cent and accommodation establishments recorded nearly 495,000 of them.

The occupancy rate of hotel rooms in the whole country was 46.8 per cent in December. One year earlier, it was 42.5 per cent. Examined by region, the highest hotel room occupancy rate was recorded in Lapland, 64.4 per cent, and Uusimaa reached an occupancy rate of 56.3 per cent. In North Ostrobothnia, 48.2 per cent of hotel rooms were in use. In Rovaniemi, the hotel room occupancy rate rose to 83.4 per cent and in Kittilä to 70.2 per cent. The hotel room occupancy rate in Helsinki was 62.7 per cent.

In December, the realised average price of a hotel room was EUR 96.06 per day for the whole country. Twelve months previously, it was EUR 93.83.

Hotel room occupancy rate and the monthly average price



Overnight stays at all accommodation establishments remained on level with the previous year in 2015

Between January and December 2015, the number of nights spent at accommodation establishments in Finland totalled good 19.7 million. The number was almost the same as in the corresponding period of the year before; it went down by just 0.2 per cent. Compared to the January to December period of 2014, the number of nights spent by resident tourists increased by 1.2 per cent and that of nights spent by foreign tourists **decreased** by 3.6 per cent. Good 14.2 million overnight stays were recorded for resident tourists and 5.5 million for non-resident tourists at all accommodation establishments.

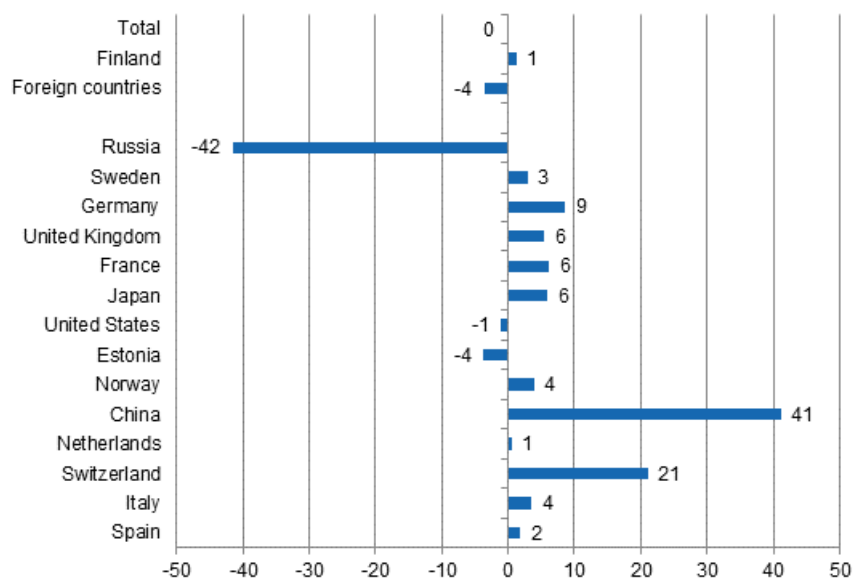
Between January and December, the number of nights spent by Russian visitors at accommodation establishments in Finland totalled close on 783,000, which was 41.6 per cent down on the respective time period of the previous year. Russians still kept their position as the largest group of foreign visitors in 2015, while Swedish visitors came next with close on 550,000 overnight stays. Overnight stays of Swedes went up by 2.9 per cent. Good 543,000 overnight stays were recorded for German visitors and nearly 472,000 for British tourists in January to December. The overnight stays of visitors from Germany increased by 8.6 per cent and those of visitors from Great Britain by 5.5 per cent from the previous year's corresponding period.

In January to December, overnight stays by French tourists numbered good 228,000, up by 6.1 per cent from the corresponding period of the previous year. In all, 203,000 overnight stays were recorded at

accommodation establishments for Japanese visitors and nearly 202,000 for ones from the United States. Overnight stays by Japanese tourists increased by 5.9 per cent, while those by tourists from the United States decreased by 1.1 per cent from the corresponding period of 2014.

Among the most important countries of inbound tourism to Finland, overnight stays by Chinese visitors increased most, or by 41.2 per cent, in 2015. The number of overnight stays by Chinese visitors rose to nearly 182,000. The number of overnight stays by visitors from Switzerland has also increased strongly and was nearly 159,000, which was 21.2 per cent more than in 2014.

Change in overnight stays in January-December 2015/2014, %



Contents

Tables

Appendix tables

Appendix table 1.1. Capacity and its utilization, December 2015.....	6
Appendix table 1.2. Capacity and its utilization, January-December 2015.....	7
Appendix table 2.1. Nights spend in all establishments, December 2015.....	8
Appendix table 2.2. Nights spend in all establishments, January-December 2015.....	9
Appendix table 3.1. Hotel capacity and capacity utilization, December 2015.....	10
Appendix table 3.2. Hotel capacity and capacity utilization, January-December 2015.....	11
Appendix table 4.1. Nights spend in hotels, December 2015.....	12
Appendix table 4.2. Nights spend in hotels, January-December 2015.....	13
Appendix table 5.1. Visitor arrivals and nights spend by country of residence, December 2015.....	14
Appendix table 5.2. Visitor arrivals and nights spend by country of residence, January-December 2015.....	14
Appendix table 6. Nights spend in all establishments, 2015.....	15

Appendix tables

Appendix table 1.1. Capacity and its utilization, December 2015

Region	Number of establishments	Number of bedrooms	Occupancy rate of bedrooms, %	Change of the occupancy rate compared to previous year, %-units	Average price of nights spend, in euros (incl. VAT 10 %)
Whole country	1,061	57,778	43.3	3.3	51.20
Mainland Finland	1,037	56,980	43.7	3.4	51.19
Uusimaa	137	14,630	55.6	7.0	62.96
Varsinais-Suomi	62	3,430	35.2	-0.5	53.72
Satakunta	39	1,405	27.7	-0.1	53.94
Kanta-Häme	31	1,461	28.7	2.5	49.73
Pirkanmaa	71	4,443	39.2	5.0	52.68
Päijät-Häme	34	1,844	30.4	2.1	46.98
Kymenlaakso	27	1,000	28.4	1.7	57.89
South Karelia	32	1,595	31.7	-0.1	41.57
Etelä-Savo	77	2,212	27.0	1.9	41.52
Pohjois-Savo	48	2,592	33.3	-2.0	48.60
North Karelia	48	1,421	31.8	-1.0	51.53
Central Finland	46	3,046	36.8	2.0	45.52
South Ostrobothnia	41	1,617	34.5	4.9	42.95
Ostrobothnia	28	1,258	32.6	-2.7	68.29
Central Ostrobothnia	14	532	29.8	0.5	60.34
North Ostrobothnia	96	4,306	43.8	4.1	41.22
Kainuu	42	2,186	35.1	-4.4	22.92
Lapland	164	8,002	58.7	3.6	48.25
Åland	24	798	14.5	-0.6	¹⁾ ..

1) [...] Data too uncertain for presentation.

Appendix table 1.2. Capacity and its utilization, January-December 2015

Region	Number of establishments	Number of bedrooms	Occupancy rate of bedrooms, %	Change of the occupancy rate compared to previous year, %-units	Average price of nights spend, in euros (incl. VAT 10 %)
Whole country	1,175	60,729	48.2	0.4	51.10
Mainland Finland	1,126	59,467	48.5	0.4	51.21
Uusimaa	145	15,039	62.9	1.1	64.54
Varsinais-Suomi	73	3,715	48.8	-0.1	49.79
Satakunta	42	1,498	40.9	2.5	51.61
Kanta-Häme	33	1,610	34.2	-1.7	46.04
Pirkanmaa	74	4,520	49.6	1.8	51.87
Päijät-Häme	37	1,984	39.0	-3.2	44.03
Kymenlaakso	30	1,167	38.8	-2.8	42.78
South Karelia	36	1,823	43.7	-5.5	42.43
Etelä-Savo	86	2,491	37.6	-0.6	39.91
Pohjois-Savo	52	2,647	45.7	-0.6	46.33
North Karelia	53	1,554	43.3	0.1	46.80
Central Finland	51	3,156	46.6	-0.4	47.21
South Ostrobothnia	46	1,788	43.5	2.3	40.19
Ostrobothnia	33	1,413	45.0	-0.9	48.83
Central Ostrobothnia	16	572	39.8	-2.8	52.21
North Ostrobothnia	100	4,414	47.1	2.4	42.73
Kainuu	46	2,254	41.7	0.5	32.95
Lapland	173	7,822	40.4	0.1	44.43
Åland	49	1,262	35.5	2.2	1) ..

1) [...] Data too uncertain for presentation.

Appendix table 2.1. Nights spend in all establishments, December 2015

Region	Nights spend, total	Change of nights spend, total, %	Nights spend, residents	Change of nights spend, residents, %	Nights spend, non-residents	Change of nights spend, non-residents, %
Whole country	1,388,371	6.9	835,794	4.7	552,577	10.4
Mainland Finland	1,384,001	7.0	833,797	4.7	550,204	10.6
Uusimaa	374,127	17.7	199,463	12.0	174,664	24.8
Varsinais-Suomi	56,986	2.6	48,777	3.6	8,209	-3.2
Satakunta	17,012	5.6	14,330	11.7	2,682	-18.2
Kanta-Häme	18,685	0.8	16,539	2.7	2,146	-11.7
Pirkanmaa	84,079	12.0	70,299	4.7	13,780	74.0
Päijät-Häme	31,530	4.4	28,140	6.9	3,390	-12.4
Kymenlaakso	11,985	-11.0	9,771	4.5	2,214	-46.1
South Karelia	31,045	-2.0	20,448	2.0	10,597	-8.9
Etelä-Savo	32,639	3.3	26,474	3.5	6,165	2.4
Pohjois-Savo	44,712	-4.1	40,655	0.1	4,057	-32.7
North Karelia	21,988	-7.9	19,650	0.5	2,338	-46.0
Central Finland	61,493	4.5	52,431	12.4	9,062	-25.7
South Ostrobothnia	29,449	-1.1	27,394	-4.8	2,055	100.7
Ostrobothnia	18,730	-7.2	15,663	-2.0	3,067	-26.9
Central Ostrobothnia	6,831	2.4	6,122	2.1	709	5.3
North Ostrobothnia	123,993	6.9	90,626	6.0	33,367	9.4
Kainuu	69,405	-12.4	62,050	-9.2	7,355	-32.4
Lapland	349,312	8.5	84,965	3.3	264,347	10.3
Åland	4,370	-16.0	1,997	-5.8	2,373	-23.0

Appendix table 2.2. Nights spend in all establishments, January-December 2015

Region	Nights spend, total	Change of nights spend, total, %	Nights spend, residents	Change of nights spend, residents, %	Nights spend, non-residents	Change of nights spend, non-residents, %
Whole country	19,749,613	-0.2	14,245,609	1.2	5,504,004	-3.6
Mainland Finland	19,344,849	-0.3	14,080,631	1.1	5,264,218	-3.8
Uusimaa	5,384,743	5.0	2,955,867	6.4	2,428,876	3.4
Varsinais-Suomi	1,166,301	-1.1	954,011	0.4	212,290	-7.2
Satakunta	392,621	-0.0	334,261	-1.0	58,360	6.2
Kanta-Häme	356,288	-4.8	318,100	-4.5	38,188	-7.5
Pirkanmaa	1,453,144	4.6	1,243,037	5.7	210,107	-1.4
Päijät-Häme	543,019	-6.7	457,599	-6.0	85,420	-10.1
Kymenlaakso	319,946	-8.2	242,541	-0.6	77,405	-26.0
South Karelia	590,153	-12.4	399,951	13.0	190,202	-40.6
Etelä-Savo	696,936	-8.5	553,297	-2.8	143,639	-25.4
Pohjois-Savo	814,484	-2.4	713,090	-0.6	101,394	-13.8
North Karelia	480,900	-1.2	393,295	2.6	87,605	-15.2
Central Finland	982,768	-5.8	854,109	-4.1	128,659	-15.9
South Ostrobothnia	685,453	3.4	657,163	3.2	28,290	9.0
Ostrobothnia	420,609	4.3	338,705	3.8	81,904	6.0
Central Ostrobothnia	148,862	-10.9	132,288	-10.7	16,574	-13.2
North Ostrobothnia	1,585,261	-3.6	1,313,594	-3.7	271,667	-3.1
Kainuu	967,936	-0.3	889,262	1.6	78,674	-17.6
Lapland	2,355,425	0.0	1,330,461	-1.6	1,024,964	2.3
Åland	404,764	4.1	164,978	8.8	239,786	1.0

Appendix table 3.1. Hotel capacity and capacity utilization, December 2015

Region / municipality	Number of establishments	Number of bedrooms	Occupancy rate of bedrooms, %	Change compared to previous year, %-units	Room price, euros (incl. VAT 10 %)	¹⁾ RevPAR, euros (incl. VAT 10 %)
Whole country	597	49,808	46.8	4.3	96.06	44.94
Mainland Finland	587	49,215	47.1	4.3	96.07	45.21
Uusimaa	111	14,287	56.3	7.3	99.06	55.73
Espoo	11	1,161	45.0	5.0	82.31	37.03
Helsinki	52	8,623	62.7	8.8	101.32	63.51
Vantaa	11	2,237	59.0	4.7	99.59	58.80
Varsinais-Suomi	37	2,844	38.7	-0.7	88.90	34.42
Turku	18	1,904	42.0	2.3	87.15	36.62
Satakunta	24	1,113	33.2	0.5	83.02	27.56
Pori	9	645	30.2	-2.6	81.33	24.59
Kanta-Häme	18	1,255	31.9	2.9	80.32	25.61
Hämeenlinna	8	629	38.1	12.1	89.33	34.00
Pirkanmaa	42	3,902	40.8	5.6	93.07	38.01
Tampere	25	2,947	45.6	8.0	94.46	43.06
Päijät-Häme	14	1,680	31.9	2.0	82.78	26.41
Lahti	5	559	41.1	6.8	88.13	36.21
Kymenlaakso	14	735	35.8	6.1	87.95	31.51
Kouvola	6	425	36.9	11.4	81.22	29.97
South Karelia	13	1,171	36.6	3.2	88.96	32.57
Lappeenranta	8	813	39.1	-4.3	76.31	29.85
Etelä-Savo	28	1,557	33.0	3.9	77.03	25.39
Mikkeli	8	547	41.9	7.8	79.67	33.37
Pohjois-Savo	28	2,305	35.1	-1.0	87.14	30.62
Kuopio	15	1,413	39.0	-3.1	89.68	35.00
North Karelia	21	1,187	35.7	-0.2	81.98	29.24
Joensuu	6	601	42.6	-4.3	84.46	36.01
Central Finland	26	2,696	39.6	2.3	82.97	32.85
Jyväskylä	11	1,358	42.3	4.1	85.67	36.24
South Ostrobothnia	22	1,408	38.9	5.6	74.37	28.91
Seinäjoki	7	609	43.5	9.1	83.31	36.23
Ostrobothnia	21	1,157	35.2	-1.1	91.52	32.20
Vaasa	8	736	42.2	-0.7	92.20	38.92
Central Ostrobothnia	9	474	31.5	0.7	86.97	27.37
Kokkola	5	361	35.4	2.4	88.53	31.38
North Ostrobothnia	49	3,348	48.2	5.6	87.90	42.39
Kuusamo	11	795	49.4	7.8	109.27	54.03
Oulu	11	1,418	56.5	5.6	86.66	48.97
Kainuu	20	1,753	38.7	-2.0	57.98	22.45
Kajaani	6	414	30.5	1.5	79.05	24.14
Sotkamo	6	1,095	44.4	-5.0	53.65	23.81
Lapland	90	6,343	64.4	3.6	119.75	77.15
Rovaniemi	13	1,323	83.4	1.0	144.02	120.14
Åland	10	593	19.6	1.0
Maarianhamina	5	404	28.1	1.3

1) RevPar = Average accommodation sales revenue per available room. Calculation formula: RevPar = Average room price * Occupancy rate.[...] Data too uncertain for presentation.

Appendix table 3.2. Hotel capacity and capacity utilization, January-December 2015

Region / municipality	Number of establishments	Number of bedrooms	Occupancy rate of bedrooms, %	Change compared to previous year, %-units	Room price, euros (incl. VAT 10 %)	¹⁾ RevPAR, euros (incl. VAT 10 %)
Whole country	613	50,770	52.4	0.9	92.06	48.19
Mainland Finland	599	49,991	52.5	0.8	92.04	48.31
Uusimaa	113	14,478	64.0	1.5	100.71	64.42
Espoo	12	1,228	55.0	0.3	82.16	45.16
Helsinki	52	8,676	69.5	1.5	105.75	73.52
Vantaa	11	2,237	69.1	1.5	98.21	67.89
Varsinais-Suomi	39	2,970	53.3	-0.4	86.71	46.22
Turku	18	2,010	56.8	-0.4	88.60	50.31
Satakunta	25	1,155	47.0	3.4	86.12	40.51
Pori	9	645	48.5	2.4	88.08	42.76
Kanta-Häme	18	1,329	39.0	-1.2	75.46	29.42
Hämeenlinna	8	701	39.1	0.9	85.89	33.57
Pirkanmaa	42	3,845	52.6	2.0	95.15	50.02
Tampere	25	2,927	56.7	1.8	97.59	55.35
Päijät-Häme	15	1,740	41.3	-3.4	81.36	33.62
Lahti	6	623	48.3	2.6	87.13	42.05
Kymenlaakso	16	899	42.5	-0.5	85.69	36.46
Kouvola	7	436	42.0	0.5	81.14	34.06
South Karelia	15	1,354	48.1	-5.8	89.24	42.94
Lappeenranta	8	803	55.9	-6.0	81.05	45.34
Etelä-Savo	30	1,703	42.2	0.3	79.11	33.39
Mikkeli	8	572	49.2	1.9	79.81	39.24
Pohjois-Savo	29	2,318	47.4	-0.2	87.04	41.29
Kuopio	16	1,418	51.5	-0.9	90.42	46.52
North Karelia	22	1,212	48.2	0.3	87.46	42.14
Joensuu	7	622	58.2	-1.1	88.89	51.75
Central Finland	27	2,711	50.1	-0.5	84.28	42.26
Jyväskylä	12	1,421	54.1	-0.6	91.10	49.26
South Ostrobothnia	22	1,473	49.2	2.0	77.20	37.98
Seinäjoki	7	584	53.1	2.6	85.58	45.42
Ostrobothnia	22	1,234	48.7	-0.2	88.79	43.26
Vaasa	8	796	56.2	1.3	91.06	51.20
Central Ostrobothnia	9	484	42.2	-2.9	84.88	35.83
Kokkola	5	367	48.1	-4.0	86.42	41.57
North Ostrobothnia	49	3,356	52.8	4.2	84.47	44.59
Kuusamo	10	765	38.7	1.7	90.57	35.07
Oulu	12	1,460	66.7	6.4	88.74	59.22
Kainuu	20	1,776	45.6	0.3	72.77	33.21
Kajaani	6	414	39.6	3.1	78.17	30.94
Sotkamo	6	1,107	52.4	-0.5	70.95	37.15
Lapland	86	5,955	44.7	1.0	94.68	42.31
Rovaniemi	13	1,286	55.2	-0.1	92.34	51.02
Åland	14	780	43.0	2.5
Maarianhamina	6	480	56.8	4.1

1) RevPar = Average accommodation sales revenue per available room. Calculation formula: RevPar = Average room price * Occupancy rate.[...] Data too uncertain for presentation.

Appendix table 4.1. Nights spend in hotels, December 2015

Region / municipality	Nights spend, total	Change of nights spend, total, %	Nights spend, residents	Change of nights spend, residents, %	Nights spend, non-residents	Change of nights spend, non-residents, %
Whole country	1,206,770	9.0	712,200	6.4	494,570	13.0
Mainland Finland	1,202,699	9.0	710,336	6.4	492,363	13.1
Uusimaa	363,961	19.1	193,222	12.9	170,739	27.0
Espoo	20,684	22.0	13,417	31.1	7,267	8.3
Helsinki	251,488	23.3	118,017	14.2	133,471	32.7
Vantaa	62,546	10.2	38,309	9.5	24,237	11.4
Varsinais-Suomi	52,616	2.1	45,358	4.0	7,258	-8.2
Turku	38,464	7.2	32,809	7.5	5,655	6.0
Satakunta	14,094	2.3	11,746	8.6	2,348	-20.5
Pori	8,153	-7.3	7,270	0.6	883	-43.7
Kanta-Häme	17,115	3.3	15,051	5.9	2,064	-12.1
Hämeenlinna	10,218	8.2	8,927	2.1	1,291	85.5
Pirkanmaa	74,235	15.3	61,566	7.9	12,669	73.2
Tampere	59,566	19.3	47,846	10.1	11,720	80.6
Päijät-Häme	25,501	5.2	22,619	7.5	2,882	-9.8
Lahti	8,336	6.9	6,499	5.3	1,837	13.3
Kymenlaakso	9,021	-16.6	7,335	-1.0	1,686	-50.5
Kouvola	4,831	9.6	4,114	12.7	717	-5.3
South Karelia	25,435	-2.0	16,756	0.6	8,679	-6.6
Lappeenranta	17,269	-0.8	12,604	-1.8	4,665	2.2
Etelä-Savo	24,665	13.5	22,080	13.1	2,585	16.5
Mikkeli	10,381	20.7	9,101	23.7	1,280	3.0
Pohjois-Savo	40,473	-2.7	37,378	-0.6	3,095	-22.9
Kuopio	27,191	-4.2	25,294	-1.6	1,897	-28.8
North Karelia	19,628	-5.8	17,853	2.6	1,775	-48.4
Joensuu	9,968	-16.0	8,852	-4.9	1,116	-56.3
Central Finland	56,087	2.3	47,385	10.2	8,702	-26.4
Jyväskylä	24,871	11.6	21,699	14.4	3,172	-4.3
South Ostrobothnia	26,253	-4.0	24,385	-8.3	1,868	148.7
Seinäjoki	9,242	5.8	8,284	0.1	958	108.3
Ostrobothnia	17,240	-4.7	14,225	1.2	3,015	-25.4
Vaasa	12,605	-8.5	10,063	-1.7	2,542	-28.2
Central Ostrobothnia	5,736	-0.1	5,382	-0.1	354	0.3
Kokkola	4,586	3.2	4,237	2.0	349	19.1
North Ostrobothnia	91,706	10.2	67,084	10.5	24,622	9.4
Kuusamo	31,540	18.6	20,315	13.6	11,225	28.8
Oulu	38,963	0.5	31,403	5.0	7,560	-14.8
Kainuu	52,533	-6.2	46,558	-3.9	5,975	-21.1
Kajaani	5,255	6.5	4,769	6.7	486	4.7
Sotkamo	44,191	-9.1	39,893	-6.3	4,298	-29.0
Lapland	286,400	9.8	54,353	2.3	232,047	11.7
Rovaniemi	76,378	12.6	13,258	10.3	63,120	13.1
Åland	4,071	-1.5	1,864	0.3	2,207	-3.0
Maarianhamina	3,616	5.7	1,704	9.1	1,912	2.9

Appendix table 4.2. Nights spend in hotels, January-December 2015

Region / municipality	Nights spend, total	Change of nights spend, total, %	Nights spend, residents	Change of nights spend, residents, %	Nights spend, non-residents	Change of nights spend, non-residents, %
Whole country	15,824,036	1.0	11,225,182	2.7	4,598,854	-2.8
Mainland Finland	15,604,531	0.9	11,125,293	2.6	4,479,238	-3.1
Uusimaa	5,034,852	5.0	2,737,954	6.5	2,296,898	3.3
Espoo	357,927	5.2	225,472	17.5	132,455	-10.7
Helsinki	3,279,374	5.5	1,530,103	4.2	1,749,271	6.7
Vantaa	849,725	4.5	530,674	10.0	319,051	-3.5
Varsinais-Suomi	931,963	-1.2	763,459	0.6	168,504	-8.8
Turku	660,721	-1.5	536,996	0.4	123,725	-9.1
Satakunta	277,160	0.9	225,964	-0.9	51,196	9.5
Pori	165,740	-0.1	141,901	-0.8	23,839	4.5
Kanta-Häme	305,457	-0.8	269,741	-0.4	35,716	-3.6
Hämeenlinna	162,709	-3.3	145,739	-0.3	16,970	-22.9
Pirkanmaa	1,205,285	6.2	1,027,526	7.2	177,759	0.6
Tampere	946,873	7.1	784,407	8.2	162,466	2.5
Päijät-Häme	441,382	-5.0	371,527	-4.6	69,855	-7.1
Lahti	152,218	-5.3	111,261	-6.9	40,957	-0.6
Kymenlaakso	195,314	-13.8	148,639	-6.1	46,675	-31.7
Kouvola	97,445	-6.2	80,746	0.0	16,699	-27.7
South Karelia	454,905	-15.4	310,953	12.1	143,952	-44.7
Lappeenranta	296,519	-7.0	227,613	12.8	68,906	-41.1
Etelä-Savo	426,842	-4.9	371,967	-0.8	54,875	-25.6
Mikkeli	161,635	0.4	135,386	5.8	26,249	-20.4
Pohjois-Savo	677,869	-1.5	608,975	0.2	68,894	-14.4
Kuopio	444,362	-0.4	400,516	2.0	43,846	-18.1
North Karelia	352,647	-0.5	296,762	6.4	55,885	-26.2
Joensuu	187,759	-2.6	154,643	7.2	33,116	-31.9
Central Finland	838,056	-5.7	722,501	-3.4	115,555	-17.5
Jyväskylä	418,216	-2.9	358,685	-1.5	59,531	-10.5
South Ostrobothnia	486,820	1.1	465,762	0.9	21,058	6.8
Seinäjoki	163,694	0.5	150,673	-0.4	13,021	13.3
Ostrobothnia	321,241	1.3	255,743	2.6	65,498	-3.7
Vaasa	239,308	0.7	184,403	1.2	54,905	-0.8
Central Ostrobothnia	105,768	-9.3	97,347	-7.8	8,421	-24.2
Kokkola	88,712	-7.3	81,488	-6.1	7,224	-19.3
North Ostrobothnia	1,088,811	2.0	889,841	2.5	198,970	-0.3
Kuusamo	251,918	1.8	194,357	7.2	57,561	-13.2
Oulu	546,123	1.6	455,909	4.6	90,214	-11.2
Kainuu	732,160	3.3	679,254	5.7	52,906	-19.9
Kajaani	85,848	7.2	77,717	7.9	8,131	0.5
Sotkamo	608,105	3.2	572,395	5.9	35,710	-27.1
Lapland	1,727,999	1.1	881,378	-1.0	846,621	3.5
Rovaniemi	444,907	10.2	199,832	17.7	245,075	4.7
Åland	219,505	11.6	99,889	12.3	119,616	11.0
Maarianhamina	159,027	17.8	80,369	16.1	78,658	19.6

Appendix table 5.1. Visitor arrivals and nights spend by country of residence, December 2015

Country of residence	Visitor arrivals in all accommodation establishments	Nights spend in all accommodation establishments	Change of nights spend in all accommodation establishments, %	Nights spend in hotels	Change of nights spend in hotels, %
Total	703,607	1,388,371	6.9	1,206,770	9.0
Finland	472,612	835,794	4.7	712,200	6.4
Foreign countries	230,995	552,577	10.4	494,570	13.0
Sweden	16,435	26,366	6.2	26,000	8.7
Germany	12,413	32,322	12.5	28,115	12.9
Russia	27,481	59,029	-21.6	45,158	-19.1
United Kingdom	48,058	147,865	8.8	133,049	9.6
United States	5,437	11,559	19.4	11,083	17.5
Norway	4,234	8,065	4.1	7,319	1.2
Netherlands	4,339	12,253	23.3	9,575	23.3
Italy	6,003	14,334	6.0	13,161	7.9
France	10,144	33,609	23.2	31,135	26.8
Japan	9,577	18,251	4.6	17,682	4.4
Estonia	5,533	13,778	-10.8	9,731	-15.8
Switzerland	3,692	11,559	19.1	8,187	17.7
Spain	5,462	16,014	15.9	13,933	11.6
China	7,721	13,301	34.0	12,305	41.2

Appendix table 5.2. Visitor arrivals and nights spend by country of residence, January-December 2015

Country of residence	Visitor arrivals in all accommodation establishments	Nights spend in all accommodation establishments	Change of nights spend in all accommodation establishments, %	Nights spend in hotels	Change of nights spend in hotels, %
Total	10,745,899	19,749,613	-0.2	15,824,036	1.0
Finland	8,126,386	14,245,609	1.2	11,225,182	2.7
Foreign countries	2,619,513	5,504,004	-3.6	4,598,854	-2.8
Sweden	315,411	549,664	2.9	438,779	6.3
Germany	266,422	543,249	8.6	445,629	10.3
Russia	351,788	782,918	-41.6	570,522	-43.0
United Kingdom	189,731	471,536	5.5	420,033	6.2
United States	94,893	201,814	-1.1	194,257	-1.0
Norway	94,420	185,925	3.9	143,671	1.2
Netherlands	72,372	159,541	0.5	127,830	2.7
Italy	61,215	127,495	3.5	113,800	5.7
France	87,361	228,461	6.1	201,015	7.3
Japan	108,011	203,392	5.9	197,437	6.6
Estonia	81,234	189,021	-3.7	130,605	-6.7
Switzerland	69,717	158,827	21.2	119,844	22.2
Spain	48,614	106,406	1.9	94,512	4.5
China	121,127	181,716	41.2	176,506	43.0

Appendix table 6. Nights spend in all establishments, 2015

Month	Nights spend, total	Change of nights spend, total, %	Nights spend, residents	Change of nights spend, residents, %	Nights spend, non-residents	Change of nights spend, non-residents, %
Total	19,749,613	-0.2	14,245,609	1.2	5,504,004	-3.6
January	1,276,319	-7.8	787,016	2.7	489,303	-20.9
February	1,450,943	1.9	1,055,846	3.4	395,097	-2.0
March	1,575,937	-3.0	1,163,153	-0.4	412,784	-9.7
April	1,349,071	-0.1	1,060,041	1.2	289,030	-4.5
May	1,349,529	-0.1	962,020	1.2	387,509	-3.1
June	2,022,346	-2.8	1,500,518	-1.3	521,828	-6.7
July	2,953,693	0.6	2,200,585	-0.9	753,108	5.4
August	2,144,040	-0.1	1,487,651	2.7	656,389	-5.8
September	1,563,332	3.6	1,158,309	3.3	405,023	4.4
October	1,418,454	2.7	1,106,191	3.3	312,263	0.7
November	1,257,578	-3.3	928,485	-1.2	329,093	-8.7
December	1,388,371	6.9	835,794	4.7	552,577	10.4

Inquiries

Marjut Tuominen 029 551 3556

Kari Keränen 029 551 3208

Director in charge:

Mari Ylä-Jarkko

liikenne.matkailu@stat.fi

www.stat.fi

Source: Accommodation Statistics. Statistics Finland