

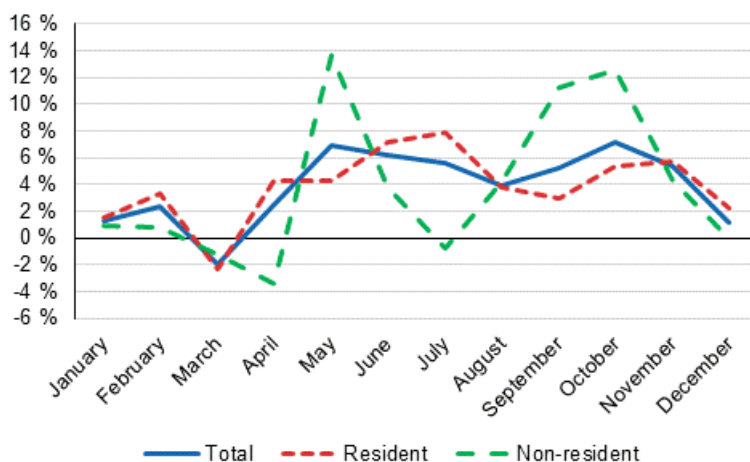
Accommodation statistics 2019

Demand for accommodation services grew by 3.9 per cent in 2019

In 2019, accommodation establishments in Finland recorded over 23 million overnight stays, of which domestic tourists accounted for around 16 million and foreign tourists for 7.1 million. The foreign demand for accommodation services grew by 3.1 per cent and the domestic demand grew by 4.2 per cent compared with the previous year. The total demand for accommodation services grew in total by 3.9 per cent in 2019.

In 2018, the demand for accommodation services grew moderately after the strong growth in 2017. Also in 2019, there was growth every month except for March. In the early part of the year the demand grew the least, by under two per cent. In March, demand even declined by two per cent from the previous year. However, the growth percentages started rising rapidly and by May the growth compared to the previous year was already close on seven per cent. After this the growth was more even, typically between four and six per cent. From October the growth percentages declined and in December the growth was only close on two per cent. These figures are data from Statistics Finland’s statistics on accommodation establishments and they have been collected from accommodation establishments with at least 20 beds or caravan pitches with electricity connection.

Year-on-year changes in nights spent (%) by month 2019/2018



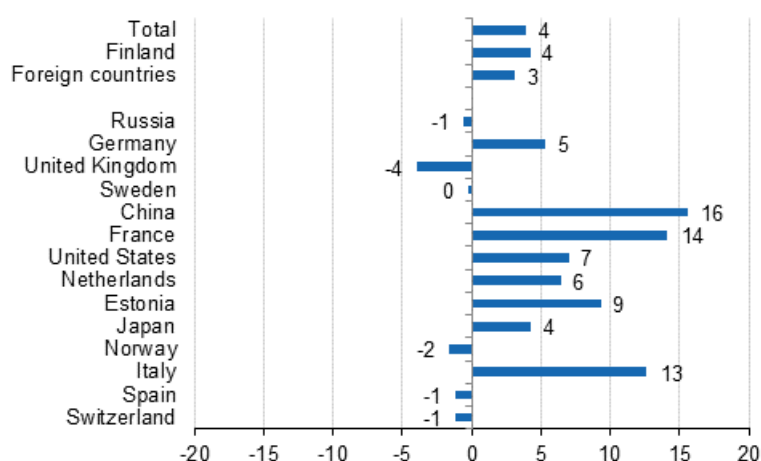
Russians still formed the largest group of foreign visitors in accommodation establishments in 2019

Russians were still the largest group of foreign tourists in Finnish accommodation establishments in 2019. A total of 821,000 overnight stays were recorded for them, which was nearly one per cent down on the year before. The share of Russians among all overnight stays by foreign tourists remained at 12 per cent in 2019 just like in 2018. Germans came second with good 662,000 overnight stays. Their overnight stays increased by 5.3 per cent year-on-year. Third most overnight stays were recorded for British tourists, 569,000. The number was four per cent lower than in 2018. British visitors were followed by Swedes whose number of overnight stays at accommodation establishments was 558,000. However, overnight stays by Swedish tourists decreased by 0.3 per cent compared with 2018.

Nearly 384,000 overnight stays were recorded for Chinese tourists, which made them the fifth largest group. Overnight stays recorded for French visitors increased by 14.1 per cent and totalled good 342,000 at accommodation establishments. Among the most important countries of inbound tourism to Finland, the biggest growth percentages came from China, France and Italy. Overnight stays by Chinese tourists grew by 15.6 per cent. Overnight stays by French tourists increased by 14.1 per cent and they amounted to good 342,000. The number of overnight stays by Italian visitors was 12.6 per cent up on the previous year, but their stays remained at around 180,000 nights.

Finnish accommodation establishments recorded altogether good 1.2 million overnight stays for Asians in 2019. Overnight stays by Chinese and Japanese visitors covered 50.3 per cent of all overnight stays of the whole of Asia. Nearly 883,000 overnight stays were recorded for the Nordic countries, which was 0.6 per cent up on the year before. Examined by continent, the biggest growth percentage came from Asia, 13.5 per cent. In all, 6.0 per cent more overnight stays were recorded for visitors from EU countries than in 2018, the number of nights rising to 3.2 million. Tourism from America increased by 8.9 per cent and overnight stays amounted to good 437,000. Overnight stays recorded for African visitors numbered nearly 30,000 in 2019, which was 3.3 per cent down from 2018.

Change in overnight stays 2019/ 2018, %

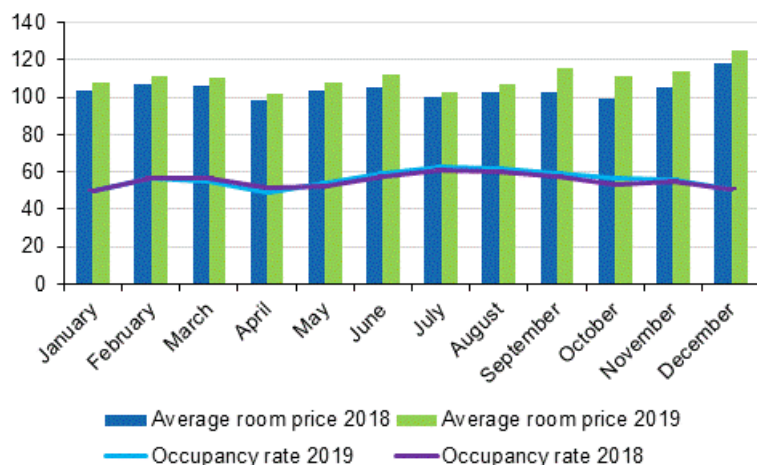


Number of nights spent at hotels totalled good 18.4 million in 2019

In 2019, the total number of nights spent in hotels was good 18.4 million, which was 4.1 per cent higher than in 2018. In total, 12.6 million overnight stays were recorded for resident tourists and around 5.9 million for non-resident tourists. The overnight stays of resident visitors increased by 4.8 per cent and those of non-resident visitors by 2.6 per cent from 2018. Overnight stays at hotels covered almost 80 per cent of all overnight stays at accommodation establishments. The share of foreign tourists of overnight stays in hotels was 32 per cent and 31 per cent of all overnight stays at accommodation establishments.

The occupancy rate of hotel rooms for the whole country was 56.1 per cent in 2019. One year earlier it was 55.4 per cent. The average price of a hotel room has been growing since 2011, when the average price was EUR 88. In 2019, the average price of a hotel room was EUR 111.

Hotel room occupancy rate and the monthly average price in 2018 and 2019



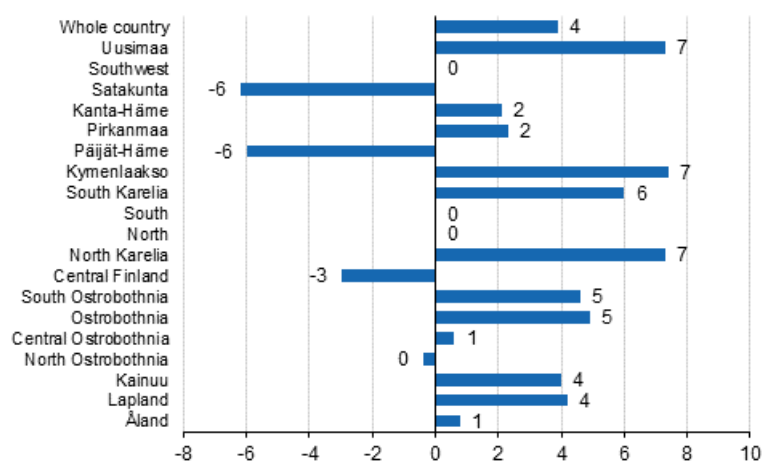
Regional development of overnight stays in 2019

In Mainland Finland, the growth in overnight stays in 2019 was biggest in Southwest Finland, where 7.6 per cent more overnight stays were recorded than in 2018. In North Karelia, overnight stays went up by 7.3 per cent. In Kainuu, overnight stays grew by around four per cent, in South Savo 1.1 per cent and in Uusimaa by around 7.3 per cent. In South Karelia, overnight stays grew by six per cent, in Kanta-Häme 2.1 per cent and in Lapland by around 4.2 per cent. The biggest relative drop in demand was measured in Satakunta, where overnight stays decreased by 6.2 per cent. Overnight stays decreased in Päijät-Häme by six per cent and stays also slightly decreased in South Ostrobothnia and Central Finland compared with the previous year. In the other regions overnight stays increased slightly or remained on the same level as in 2018.

In absolute numbers, overnight stays in accommodation establishments increased most in Uusimaa, where good 478,000 more overnight stays were recorded, and in Lapland, where overnight stays grew by almost 126,000 from 2018.

The share of overnight stays by foreign visitors in all overnight stays was almost 46 per cent in the region of Uusimaa, and over 52 per cent in Lapland. The share of overnight stays by non-resident tourists in South Karelia was around 31 per cent. The share was around 21 per cent in Ostrobothnia and around 22 per cent in South Savo. In Uusimaa, Russians maintained their top position among all tourists. Accommodation establishments recorded around 277,000 overnight stays for them and good 259,000 for Germans. In Lapland, the biggest group of foreign visitors were British tourists for whom good 270,000 overnight stays were recorded.

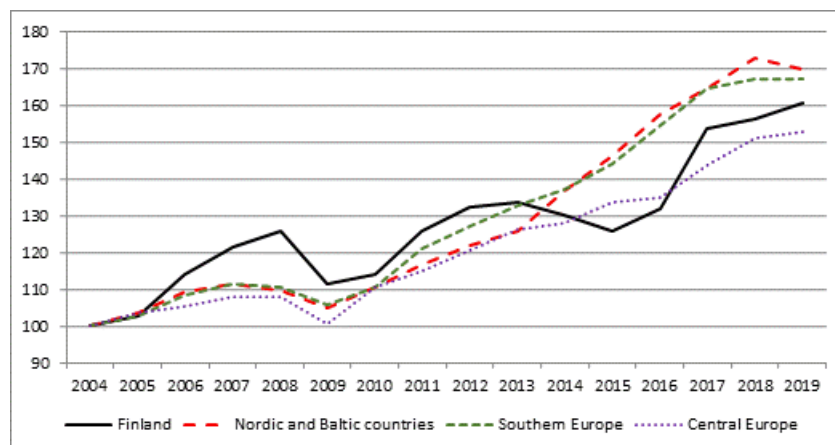
Change in overnight stays by region 2019/2018,%



Growth in overnight stays by foreign visitors in Finland higher than elsewhere in Europe in 2019

In 2019, overnight stays by foreign visitors recorded in Europe was 0.5 per cent higher than in the previous year, while a growth of 3.1 per cent was attained for foreign visitors in Finland. In our neighbouring regions, the Nordic and Baltic countries, overnight stays by foreign visitors decreased by 1.7 per cent, while the growth amounted to 1.4 per cent in Central Europe. In Southern Europe, overnight stays remained on the same level. In the 2010s, overnight stays by foreign visitors in Europe have grown on average by around 4.6 per cent per year and in Finland on average by 3.9 per cent per year. In Finland, the development of overnight stays by foreigners was negative in 2014 to 2015.

Nights spent by non-residents in Europe (2004 = 100)

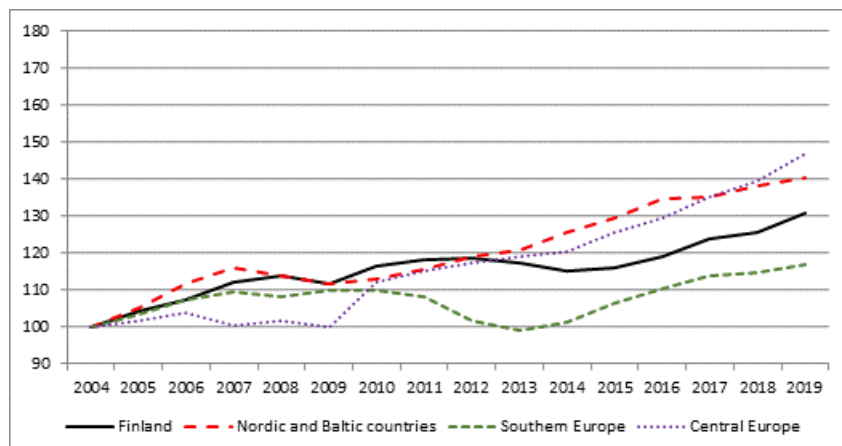


Overnight stays by resident tourists also grew elsewhere in Europe

Domestic overnight stays grew in Finland by 4.2 per cent and in Europe by 4.0 per cent in 2019. In our neighbouring regions of Nordic and Baltic countries, the growth in domestic overnight stays remained at 1.4 per cent. In Central Europe, domestic overnight stays grew by 5.3 per cent and in Southern Europe by 1.9 per cent. Over the 2010s, domestic overnight stays have grown in Europe yearly by an average of 2.7 per cent and in Finland by 1.6 per cent.

The information on overnight stays in other European countries is based on monthly data on the use of capacity at European accommodation establishments collected by Eurostat.

Nights spent by residents in Europe (2004 = 100)



Number of accommodation establishments almost unchanged, room and bed capacity grew in 2019

In 2019, the number of accommodation establishments contained in the statistics grew by two and the room capacity increased by 358 rooms and the number of beds by 836 beds. The capacity grew in hotels, while the number of camping sites and other accommodation establishments went down compared with 2018. Statistics Finland's register of accommodation establishments has been updated throughout the year with new and closed establishments and permanent changes in capacity in 2019.

In 2019, the statistics covered a total of 1,374 accommodation establishments: 682 hotels, 112 guest houses, 315 holiday villages, 215 camping sites and 50 hostels. Holiday villages of hotel calibre are included in hotels. The accommodation establishments had in total 70,029 rooms (or cottages) with a total of 173,504 beds. In addition to the room and bed capacity, the accommodation establishments had 18,901 caravan pitches with electricity connection, 14,686 of which were located at camping sites.

When the capacity of accommodation establishments is viewed according to the number of rooms, the statistics contained 985 establishments with fewer than 50 rooms and 389 establishments with at least 50 rooms in 2019. Measured by bed capacity, there were 904 establishments with fewer than one hundred beds and 470 establishments with at least one hundred beds.

In 2019, there were 1,112 accommodation establishments that were open year round and 262 establishments that were open part of the year; these were mostly camping sites.

Contents

Tables

Appendix tables

Appendix table 1. Capacity and its utilization in 2019.....	8
Appendix table 2. Nights spent in all establishments in 2019.....	9
Appendix table 3. Hotel capacity and capacity utilization in 2019.....	10
Appendix table 4. Nights spent in hotels in 2019.....	11
Appendix table 5. Visitor arrivals and nights spent by country of residence in 2019.....	12
Appendix table 6. Nights spent in all establishments by month in 2019.....	13
Appendix table 7.1. Nights spent by non-residents and annual change (%) in all establishments in 2019.....	14
Appendix table 7.2. Nights spent by non-residents and annual change (%) in all establishments in 2019.....	15
Appendix table 8.1. Nights spent by non-residents and annual change (%) in hotels in 2019.....	16
Appendix table 8.2. Nights spent by non-residents and annual change (%) in hotels in 2019.....	17
Appendix table 9.1. Capacity of accommodation establishments and capacity utilization by type of establishment in 2019.....	18
Appendix table 9.2. Capacity of accommodation establishments and capacity utilization by type of establishment, May-August 2019.....	18
Appendix table 10.1. Capacity of accommodation establishments by type of establishment in 2019.....	18
Appendix table 10.2. Capacity of accommodation establishments by opening season in 2019.....	19
Appendix table 10.3. Capacity of accommodation establishments by number of bed-places in 2019.....	19
Appendix table 10.4. Capacity of accommodation establishments by number of rooms in 2019.....	20

Appendix tables

Appendix table 1. Capacity and its utilization in 2019

Region	Number of establishments on average	Number of bedrooms on average	Occupancy rate of bedrooms, %	Change of the occupancy rate compared to previous year, %-units	Average price of night spent, in euros (incl. VAT 10 %)
Whole country	1,184	65,464	52.5	0.8	60.15
Mainland Finland	1,135	64,152	52.9	0.8	60.25
Uusimaa	171	18,263	67.3	-0.7	73.20
Espoo	15	1,393	62.9	3.0	60.97
Helsinki	74	10,504	74.4	-1.5	78.50
Vantaa	17	3,226	69.5	-1.2	67.49
Southwest Finland	74	3,642	56.0	4.3	57.15
Turku	23	2,117	67.4	6.2	62.66
Satakunta	42	1,495	42.4	-2.6	60.12
Pori	14	732	47.0	-4.3	57.31
Kanta-Häme	27	1,512	37.8	1.8	52.60
Hämeenlinna	12	773	43.9	1.1	55.91
Pirkanmaa	70	4,566	54.9	1.4	58.94
Tampere
Päijät-Häme	35	1,956	44.3	-0.8	50.68
Lahti	10	929	54.8	1.0	57.91
Kymenlaakso	29	1,115	41.4	0.3	55.86
Kouvola	14	557	43.7	2.8	53.69
South Karelia	34	2,004	49.4	0.6	45.85
Lappeenranta	13	1,229	56.5	1.7	47.72
South Savo	79	2,344	41.4	-1.2	49.91
Mikkeli	19	690	45.4	1.2	50.07
North Savo	46	2,556	49.0	2.1	52.45
Kuopio	21	1,467	55.2	3.5	58.42
North Karelia	50	1,484	47.2	1.3	50.74
Joensuu
Central Finland	52	3,234	47.0	-0.4	51.36
Jyväskylä	18	1,644	54.3	-1.0	66.25
South Ostrobothnia	47	1,915	44.5	2.4	43.08
Seinäjoki
Ostrobothnia	31	1,485	43.4	-0.9	55.86
Vaasa
Central Ostrobothnia	18	612	38.5	-0.8	57.72
Kokkola
North Ostrobothnia	105	4,721	47.4	2.0	46.29
Kuusamo	35	1,327	45.9	3.1	38.57
Oulu
Kainuu	38	2,233	47.1	2.7	44.37
Kajaani
Lapland	186	9,014	44.9	0.2	60.59
Rovaniemi	24	1,739	58.9	1.5	75.37
Åland	50	1,312	33.9	1.4	.
Maarianhamina	13	651	44.0	1.4	.

Appendix table 2. Nights spent in all establishments in 2019

Region	Nights spent, total	Change of nights spent, total, %	Nights spent, residents	Change of nights spent, residents, %	Nights spent, non-residents	Change of nights spent, non-residents, %
Whole country	23,095,660	3.9	16,039,663	4.2	7,055,997	3.1
Mainland Finland	22,699,352	3.9	15,869,098	4.2	6,830,254	3.2
Uusimaa	7,024,828	7.3	3,815,636	9.5	3,209,192	4.8
Espoo	462,063	-1.0	267,169	-6.0	194,894	6.9
Helsinki	4,489,741	7.7	2,078,045	11.8	2,411,696	4.4
Vantaa	1,243,424	11.4	805,471	14.7	437,953	5.8
Southwest Finland	1,314,000	7.6	1,048,035	6.0	265,965	14.4
Turku	849,848	7.5	657,802	4.9	192,046	17.8
Satakunta	392,128	-6.2	334,663	-7.5	57,465	2.4
Pori	220,928	-10.0	196,497	-10.3	24,431	-6.9
Kanta-Häme	382,017	2.1	350,280	3.4	31,737	-10.4
Hämeenlinna	210,285	3.1	194,829	5.3	15,456	-18.7
Pirkanmaa	1,598,868	2.3	1,378,190	4.9	220,678	-11.6
Tampere
Päijät-Häme	584,606	-6.0	483,423	-9.0	101,183	11.5
Lahti	289,116	1.3	218,063	-3.4	71,053	19.1
Kymenlaakso	304,189	7.4	245,090	10.0	59,099	-2.1
Kouvola	150,599	11.2	132,142	10.2	18,457	18.8
South Karelia	749,718	6.0	514,202	7.8	235,516	2.3
Lappeenranta	471,256	6.3	353,703	5.9	117,553	7.4
South Savo	685,051	1.1	534,475	2.3	150,576	-3.1
Mikkeli	207,811	0.9	166,478	3.3	41,333	-7.7
North Savo	862,656	3.0	757,050	2.9	105,606	3.6
Kuopio	544,424	2.0	487,139	2.6	57,285	-3.0
North Karelia	504,752	7.3	434,809	8.8	69,943	-1.4
Joensuu
Central Finland	1,053,750	-3.0	924,643	-1.6	129,107	-12.1
Jyväskylä	487,610	1.6	421,443	4.6	66,167	-13.9
South Ostrobothnia	741,792	4.6	696,127	2.8	45,665	41.2
Seinäjoki
Ostrobothnia	398,892	4.9	315,811	6.9	83,081	-1.9
Vaasa
Central Ostrobothnia	146,425	0.6	122,419	-6.1	24,006	57.7
Kokkola
North Ostrobothnia	1,841,463	-0.4	1,525,728	-0.2	315,735	-1.7
Kuusamo	597,570	0.1	447,263	1.0	150,307	-2.6
Oulu
Kainuu	992,435	4.0	894,046	5.6	98,389	-8.4
Kajaani
Lapland	3,121,782	4.2	1,494,471	4.3	1,627,311	4.1
Rovaniemi	738,191	11.3	259,119	17.9	479,072	8.0
Åland	396,308	0.8	170,565	2.0	225,743	-0.1
Maarianhamina	199,944	1.0	105,216	1.4	94,728	0.6

Appendix table 3. Hotel capacity and capacity utilization in 2019

Region / municipality	Number of establishments on average	Number of bedrooms on average	Occupancy rate of bedrooms, %	Change compared to previous year, %-units	Room price, euros (incl. VAT 10 %)	RevPAR, euros (incl. VAT 10 %)
Whole country	637	54,341	56.1	0.7	110.46	61.98
Mainland Finland	622	53,497	56.4	0.7	110.47	62.27
Uusimaa	130	16,683	68.3	-0.8	120.35	82.26
Espoo	11	1,255	61.2	2.7	99.74	61.02
Helsinki	65	10,078	74.6	-1.6	127.09	94.78
Vantaa	14	2,926	68.3	-1.4	112.68	76.92
Southwest Finland	39	2,898	61.3	4.3	102.85	63.04
Turku	19	1,936	69.4	6.1	103.01	71.46
Satakunta	26	1,188	47.9	-4.0	99.14	47.47
Pori	9	631	50.0	-4.9	100.26	50.08
Kanta-Häme	17	1,344	39.4	2.1	92.34	36.40
Hämeenlinna	7	690	45.8	1.7	93.91	42.99
Pirkanmaa	43	3,912	58.1	1.8	104.85	60.94
Tampere	26	3,072	62.9	0.8	107.89	67.84
Päijät-Häme	15	1,747	46.0	-1.4	92.11	42.34
Lahti	7	894	55.6	1.3	92.47	51.42
Kymenlaakso	16	887	44.0	0.4	102.00	44.91
Kouvola	7	423	47.8	3.6	100.97	48.22
South Karelia	15	1,591	50.5	-0.5	99.67	50.35
Lappeenranta	8	999	55.9	0.2	92.78	51.84
South Savo	28	1,647	45.5	-0.9	99.33	45.23
Mikkeli	8	554	47.4	1.7	89.50	42.44
North Savo	25	2,240	50.8	2.2	99.44	50.47
Kuopio	12	1,297	57.1	4.1	108.41	61.91
North Karelia	21	1,167	52.3	1.6	97.34	50.91
Joensuu	6	614	61.3	0.5	93.59	57.42
Central Finland	24	2,693	50.5	-0.3	98.50	49.73
Jyväskylä	12	1,472	56.8	-1.0	101.86	57.87
South Ostrobothnia	26	1,639	48.5	2.1	84.41	40.97
Seinäjoki	7	668	51.3	-2.4	98.36	50.45
Ostrobothnia	22	1,328	47.2	-1.7	95.65	45.19
Vaasa	8	878	53.1	-3.3	96.03	51.02
Central Ostrobothnia	10	505	40.7	-2.1	95.20	38.79
Kokkola	5	372	48.6	-1.9	97.94	47.57
North Ostrobothnia	51	3,347	54.7	3.7	98.60	53.92
Kuusamo	12	745	48.9	7.5	104.30	50.97
Oulu	10	1,399	68.4	3.4	103.55	70.84
Kainuu	18	1,757	53.4	3.2	85.61	45.69
Kajaani	6	416	46.5	4.4	86.41	40.21
Lapland	97	6,925	48.2	0.2	130.85	63.01
Rovaniemi	20	1,660	59.5	1.5	145.97	86.88
Åland	15	844	38.7	1.2	.	.
Maarianhamina	7	545	47.7	1.3	.	.

Appendix table 4. Nights spent in hotels in 2019

Region / municipality	Nights spent, total	Change of nights spent, total, %	Nights spent, residents	Change of nights spent, residents, %	Nights spent, non-residents	Change of nights spent, non-residents, %
Whole country	18,449,824	4.1	12,591,720	4.8	5,858,104	2.6
Mainland Finland	18,232,355	4.1	12,483,013	4.9	5,749,342	2.6
Uusimaa	6,253,294	6.4	3,324,617	8.6	2,928,677	3.9
Espoo	386,714	-1.4	224,457	-5.0	162,257	4.2
Helsinki	4,139,138	5.9	1,890,452	8.2	2,248,686	4.0
Vantaa	1,108,603	14.2	706,991	19.1	401,612	6.4
Southwest Finland	1,059,131	9.4	839,589	7.0	219,542	19.4
Turku	779,151	8.3	606,617	5.5	172,534	19.2
Satakunta	295,650	-1.5	244,621	-2.3	51,029	2.6
Pori	167,790	-4.3	146,885	-3.4	20,905	-10.0
Kanta-Häme	339,560	5.0	309,573	6.4	29,987	-8.0
Hämeenlinna	188,473	6.2	173,704	9.0	14,769	-18.7
Pirkanmaa	1,345,537	2.1	1,157,815	5.7	187,722	-15.2
Tampere	1,108,600	3.6	938,256	8.4	170,344	-16.7
Päijät-Häme	475,014	-8.6	387,174	-11.9	87,840	10.0
Lahti	282,296	3.9	213,048	-0.3	69,248	19.3
Kymenlaakso	202,727	3.8	162,109	6.6	40,618	-6.0
Kouvola	107,263	7.6	93,859	8.6	13,404	1.1
South Karelia	591,274	5.3	416,993	7.7	174,281	-0.1
Lappeenranta	373,312	3.6	287,465	4.7	85,847	0.4
South Savo	429,671	5.8	366,553	5.9	63,118	5.1
Mikkeli	146,313	1.8	125,829	4.3	20,484	-11.5
North Savo	706,170	0.9	630,034	0.5	76,136	4.1
Kuopio	460,668	2.3	417,883	2.7	42,785	-1.6
North Karelia	380,974	8.8	334,654	10.3	46,320	-0.7
Joensuu	184,820	2.2	159,380	4.0	25,440	-8.0
Central Finland	900,652	-3.2	787,871	-1.6	112,781	-13.1
Jyväskylä	450,869	1.5	391,582	4.7	59,287	-15.6
South Ostrobothnia	536,952	4.3	507,946	3.7	29,006	17.3
Seinäjoki	181,964	4.6	170,518	5.4	11,446	-5.4
Ostrobothnia	324,974	0.5	253,636	3.0	71,338	-7.6
Vaasa	248,523	-0.2	193,987	3.5	54,536	-11.4
Central Ostrobothnia	101,256	-4.8	90,030	-6.7	11,226	14.9
Kokkola	86,012	-6.9	77,069	-7.9	8,943	3.0
North Ostrobothnia	1,192,366	0.5	986,627	1.7	205,739	-4.9
Kuusamo	322,430	6.5	236,558	10.1	85,872	-2.5
Oulu	553,448	-3.8	467,867	-4.2	85,581	-1.5
Kainuu	826,142	7.2	756,248	9.0	69,894	-8.7
Kajaani	98,887	7.8	91,871	10.6	7,016	-19.1
Lapland	2,271,011	5.4	926,923	6.6	1,344,088	4.5
Rovaniemi	691,100	10.3	244,489	18.0	446,611	6.5
Åland	217,469	0.4	108,707	0.2	108,762	0.7
Maarianhamina	162,076	0.5	88,820	0.9	73,256	0.0

Appendix table 5. Visitor arrivals and nights spent by country of residence in 2019

Country of residence	Visitor arrivals in all accommodation establishments	Nights spent in all accommodation establishments	Change of nights spent in all accommodation establishments, %	Nights spent in hotels	Change of nights spent in hotels, %
Total	12,426,677	23,095,660	3.9	18,449,824	4.1
Finland	9,136,439	16,039,663	4.2	12,591,720	4.8
Foreign countries	3,290,238	7,055,997	3.1	5,858,104	2.6
Russia	387,415	820,888	-0.6	619,884	1.4
Germany	313,131	661,981	5.3	520,175	3.1
United Kingdom	220,272	569,294	-4.0	486,502	-5.3
Sweden	319,823	558,453	-0.3	442,983	-0.2
China	234,383	384,415	15.6	372,457	17.4
France	119,640	341,747	14.1	296,804	14.9
United States	142,512	309,118	7.0	295,566	6.9
Netherlands	102,374	262,222	6.4	198,460	9.1
Estonia	96,394	243,107	9.3	152,866	0.1
Japan	119,104	225,012	4.3	216,948	4.3
Norway	102,446	189,938	-1.6	152,212	0.7
Italy	81,566	180,282	12.6	159,390	13.9
Spain	74,347	173,847	-1.2	150,152	0.5
Switzerland	70,647	166,052	-1.2	116,395	-2.3
Denmark	64,192	115,874	7.6	107,530	6.9
Poland	42,406	104,492	-0.8	74,074	-10.1
India	41,039	102,386	26.9	92,704	22.0
Australia	43,658	94,526	0.5	88,810	1.4
Belgium	39,625	93,741	10.4	75,431	8.0
Austria	33,108	76,144	8.3	65,806	10.8
Thailand	20,943	69,153	42.3	29,931	-6.9
Latvia	26,253	61,588	6.2	41,174	8.0
Israel	20,716	56,166	5.3	51,606	5.8
South Korea	28,044	55,847	-6.8	51,949	-7.1
Czech	20,089	54,176	31.9	38,673	12.0
Canada	19,324	47,426	13.7	45,258	15.6
Lithuania	19,623	46,856	10.3	32,255	16.6
Portugal	14,883	41,248	25.6	31,971	13.7
Ireland	17,229	36,058	3.7	33,168	6.3
Brazil	12,732	28,656	7.6	27,081	9.8
Taiwan	18,084	28,560	4.8	26,234	7.1
Turkey	12,898	28,017	-10.1	26,568	-9.7
Hungary	9,884	26,840	12.4	22,740	12.1
Greece	9,340	22,525	24.8	20,713	20.2

Appendix table 6. Nights spent in all establishments by month in 2019

Month	Nights spent, total	Change of nights spent, total, %	Nights spent, residents	Change of nights spent, residents, %	Nights spent, non-residents	Change of nights spent, non-residents, %
Total	23,095,660	3.9	16,039,663	4.2	7,055,997	3.1
January	1,546,878	1.3	869,298	1.6	677,580	0.9
February	1,729,934	2.4	1,126,306	3.3	603,628	0.8
March	1,864,175	-2.0	1,297,056	-2.3	567,119	-1.2
April	1,578,387	2.5	1,222,363	4.3	356,024	-3.4
May	1,574,975	6.9	1,109,629	4.3	465,346	13.6
June	2,287,194	6.2	1,678,729	7.1	608,465	3.8
July	3,267,000	5.6	2,472,746	7.9	794,254	-0.7
August	2,410,118	3.9	1,624,467	3.7	785,651	4.1
September	1,823,988	5.2	1,307,777	3.0	516,211	11.2
October	1,670,416	7.1	1,234,495	5.3	435,921	12.5
November	1,565,487	5.3	1,108,721	5.8	456,766	4.3
December	1,777,108	1.2	988,076	2.2	789,032	-0.0
Spring (January-April)	6,719,374	0.9	4,515,023	1.5	2,204,351	-0.4
Summer (May-August)	9,539,287	5.5	6,885,571	6.1	2,653,716	4.0
Autumn (September-December)	6,836,999	4.6	4,639,069	4.1	2,197,930	5.7

Appendix table 7.1. Nights spent by non-residents and annual change (%) in all establishments in 2019

Region	Foreign countries		Russia		Germany		United Kingdom		Sweden		China	
Whole country	7,055,997	3.1	820,888	-0.6	661,981	5.3	569,294	-4.0	558,453	-0.3	384,415	15.6
Mainland Finland	6,830,254	3.2	816,301	-0.7	648,064	5.6	567,345	-4.0	386,109	-0.5	384,300	15.6
Uusimaa	3,209,192	4.8	276,700	2.7	258,914	4.6	195,036	-3.1	194,357	-2.6	236,775	15.7
Espoo	194,894	6.9	18,166	-1.8	13,807	6.2	8,115	-17.0	11,112	-12.1	13,134	-22.3
Helsinki	2,411,696	4.4	215,441	3.0	202,716	7.0	157,687	-0.9	145,645	-1.3	115,757	2.4
Vantaa	437,953	5.8	23,133	5.4	25,095	9.0	24,377	-9.3	25,417	-5.2	94,805	50.6
Southwest Finland	265,965	14.4	15,264	-3.9	40,437	32.5	11,195	14.1	32,460	-2.6	5,123	0.8
Turku	192,046	17.8	9,664	-11.1	29,222	33.2	9,146	21.5	24,888	0.3	4,219	11.3
Satakunta	57,465	2.4	2,225	-20.9	9,295	-19.6	2,137	-35.4	6,841	-9.5	746	13.5
Pori	24,431	-6.9	1,014	-24.4	3,476	-23.4	1,186	-37.3	2,654	-17.6	454	2.3
Kanta-Häme	31,737	-10.4	2,759	-16.8	3,800	10.5	1,400	-7.2	3,196	-16.9	409	-68.2
Hämeenlinna	15,456	-18.7	1,177	-31.0	1,748	2.9	1,030	-8.3	1,931	-7.0	209	-60.8
Pirkanmaa	220,678	-11.6	15,775	-9.0	21,290	5.2	10,910	-4.4	22,958	-1.4	6,920	-6.1
Tampere
Päijät-Häme	101,183	11.5	14,231	-27.3	8,723	-4.8	5,264	24.8	6,727	-1.2	5,601	89.5
Lahti	71,053	19.1	9,811	-27.2	5,362	-11.6	3,336	19.4	5,699	13.7	4,926	196.6
Kymenlaakso	59,099	-2.1	20,027	-5.9	5,417	-4.9	4,172	13.4	2,744	-6.5	590	-7.2
Kouvola	18,457	18.8	5,463	-0.1	2,093	17.3	436	-7.0	1,342	26.2	309	37.3
South Karelia	235,516	2.3	178,338	5.3	6,055	9.2	1,466	-5.5	5,462	15.1	2,467	52.7
Lappeenranta	117,553	7.4	81,206	14.8	4,514	12.2	1,066	-8.8	3,410	14.9	2,236	61.0
South Savo	150,576	-3.1	68,284	-7.8	22,312	1.7	2,459	9.0	3,462	5.5	1,792	-30.3
Mikkeli	41,333	-7.7	13,709	-18.5	3,290	8.9	901	13.9	1,517	30.8	771	-23.5
North Savo	105,606	3.6	32,790	-11.5	15,361	-1.4	2,601	-18.5	4,384	7.8	10,116	278.2
Kuopio	57,285	-3.0	18,877	-16.2	7,968	-0.7	2,085	-10.8	2,918	9.8	733	0.1
North Karelia	69,943	-1.4	22,972	-1.5	9,156	-9.0	2,018	7.4	2,663	-6.4	1,999	234.3
Joensuu
Central Finland	129,107	-12.1	15,161	-19.8	15,528	-11.6	5,844	-8.6	8,911	8.9	2,901	-4.9
Jyväskylä	66,167	-13.9	3,287	-24.4	7,765	-20.3	4,228	-21.1	5,652	3.6	2,123	-0.4
South Ostrobothnia	45,665	41.2	2,636	53.2	2,745	33.4	1,403	94.3	4,858	25.7	630	-10.9
Seinäjoki
Ostrobothnia	83,081	-1.9	1,545	18.0	8,447	31.7	4,025	-0.9	28,124	9.8	597	-24.6
Vaasa
Central Ostrobothnia	24,006	57.7	208	-63.8	1,539	8.2	522	-27.3	2,004	-1.9	130	-12.8
Kokkola
North Ostrobothnia	315,735	-1.7	56,262	0.5	37,763	20.6	43,147	-4.5	18,458	-0.9	9,095	-22.2
Kuusamo	150,307	-2.6	41,920	-1.1	12,021	56.3	36,706	4.9	2,367	21.8	2,151	-65.7
Oulu
Kainuu	98,389	-8.4	33,521	-6.3	8,226	5.9	3,590	-21.5	2,044	-9.4	16,273	-10.8
Kajaani
Lapland	1,627,311	4.1	57,603	4.8	173,056	4.3	270,156	-5.3	36,456	4.0	82,136	21.4
Rovaniemi	479,072	8.0	22,233	13.7	32,100	11.4	37,638	-4.3	8,886	11.4	44,422	16.8
Åland	225,743	-0.1	4,587	21.3	13,917	-5.7	1,949	7.0	172,344	0.1	115	-45.0
Maarianhamina	94,728	0.6	2,045	28.6	4,165	-9.4	1,452	33.5	73,352	-0.5	82	-53.7

Appendix table 7.2. Nights spent by non-residents and annual change (%) in all establishments in 2019

Region	France		United States		Netherlands		Estonia		Japan		Norway	
Whole country	341,747	14.1	309,118	7.0	262,222	6.4	243,107	9.3	225,012	4.3	189,938	-1.6
Mainland Finland	340,291	14.1	308,094	7.1	260,645	6.4	237,356	10.2	224,901	4.3	185,222	-2.1
Uusimaa	95,522	21.9	217,785	3.8	81,363	11.3	114,753	26.2	162,806	5.6	75,283	-1.7
Espoo	5,988	59.1	7,097	20.2	3,678	-23.2	23,971	44.2	4,444	74.4	3,304	1.5
Helsinki	76,511	24.9	181,660	2.8	63,427	12.6	48,721	1.6	144,483	5.0	60,525	-0.5
Vantaa	10,042	0.9	25,895	7.1	9,213	15.2	22,446	50.8	12,419	2.0	8,659	-6.3
Southwest Finland	8,274	10.1	8,063	-9.8	6,072	-9.5	17,970	-3.8	4,266	-7.0	7,568	3.4
Turku	6,483	27.3	7,013	-9.6	4,899	-11.2	7,494	6.0	1,955	2.1	5,055	-11.0
Satakunta	3,182	-0.9	1,420	-11.8	1,557	-9.5	2,879	-17.6	636	5.1	1,108	26.3
Pori	636	-14.9	637	-19.6	634	-17.2	1,502	-25.6	347	9.1	429	-10.8
Kanta-Häme	1,903	146.2	876	59.6	511	-16.4	1,699	-40.2	314	-30.4	777	-10.5
Hämeenlinna	471	-7.1	554	26.2	275	-12.1	577	-29.6	218	-16.5	394	-1.3
Pirkanmaa	8,189	-1.8	11,124	-0.6	6,774	-5.1	14,032	3.7	3,518	-20.5	5,080	-1.7
Tampere
Päijät-Häme	3,953	92.2	2,314	69.0	2,187	-16.9	7,770	36.9	1,999	5.2	2,656	-25.0
Lahti	2,616	100.6	1,354	26.0	1,816	-9.1	4,779	21.0	1,029	94.5	1,707	-6.5
Kymenlaakso	1,248	42.1	1,832	43.7	2,224	-34.8	5,863	22.7	341	148.9	493	-11.0
Kouvola	696	91.7	607	90.3	263	21.2	1,700	13.3	228	660.0	231	40.9
South Karelia	1,065	32.3	1,339	3.1	2,048	14.4	4,799	-17.2	505	38.7	489	-12.2
Lappeenranta	871	53.6	730	-5.7	1,838	9.1	2,232	-9.3	269	64.0	373	-16.2
South Savo	2,434	-11.6	1,372	-18.7	2,903	7.0	8,242	0.6	736	13.9	602	33.5
Mikkeli	526	-23.4	322	-7.2	607	27.3	4,893	-6.2	186	-23.5	155	0.0
North Savo	4,260	210.0	2,932	59.8	2,457	19.3	5,405	13.1	755	1.5	981	5.8
Kuopio	3,839	308.0	2,491	78.6	1,703	12.6	2,552	-2.7	393	42.9	709	0.6
North Karelia	1,627	-5.4	1,117	0.2	2,170	6.3	2,890	-5.2	550	16.5	704	-41.7
Joensuu
Central Finland	6,936	-10.8	4,675	-2.0	10,159	-21.6	17,767	-9.3	1,730	38.0	2,137	18.3
Jyväskylä	3,290	-0.2	4,299	2.3	2,013	10.8	2,953	15.2	1,600	41.3	1,653	10.3
South Ostrobothnia	1,459	57.7	974	26.2	1,136	17.1	4,317	32.1	707	-3.9	1,253	44.0
Seinäjoki
Ostrobothnia	1,937	-23.0	2,113	-15.4	2,952	18.6	2,629	-31.0	782	12.5	5,047	23.1
Vaasa
Central Ostrobothnia	382	19.7	501	-30.9	1,231	219.7	1,479	20.2	130	-11.6	484	-18.4
Kokkola
North Ostrobothnia	10,795	-2.2	5,815	-12.5	24,689	-4.7	9,554	-4.8	3,953	-18.6	15,122	-1.2
Kuusamo	4,108	0.7	860	-28.0	16,065	-5.5	2,692	2.6	1,309	-55.2	783	9.7
Oulu
Kainuu	6,332	-25.2	696	-28.2	3,018	18.7	2,713	31.1	362	-77.9	1,396	26.2
Kajaani
Lapland	180,793	13.5	43,146	41.2	107,194	12.0	12,595	-7.8	40,811	7.9	64,042	-5.1
Rovaniemi	41,132	24.1	19,345	39.2	8,721	17.6	2,165	-18.2	16,008	3.2	13,092	5.5
Åland	1,456	13.4	1,024	-13.9	1,577	-1.1	5,751	-18.0	111	-21.3	4,716	23.7
Maarianhamina	782	10.9	681	-9.0	630	-2.8	1,578	-17.8	98	-21.6	3,255	13.1

Appendix table 8.1. Nights spent by non-residents and annual change (%) in hotels in 2019

Region / municipality	Foreign countries		Russia		Germany		United Kingdom		Sweden		China	
Whole country	5,858,104	2.6	619,884	1.4	520,175	3.1	486,502	-5.3	442,983	-0.2	372,457	17.4
Mainland Finland	5,749,342	2.6	618,058	1.3	517,096	3.2	485,441	-5.4	353,506	-0.4	372,382	17.4
Uusimaa	2,928,677	3.9	248,889	3.4	231,403	2.9	187,372	-3.7	189,274	-2.7	232,923	16.7
Espoo	162,257	4.2	16,732	-1.0	12,204	5.0	7,626	-14.2	10,742	-7.5	12,748	-18.1
Helsinki	2,248,686	4.0	198,400	4.2	182,142	5.4	152,304	-1.5	142,968	-1.6	113,054	2.9
Vantaa	401,612	6.4	19,959	-0.4	23,802	7.9	22,915	-11.4	24,947	-5.1	94,136	50.6
Southwest Finland	219,542	19.4	11,546	-1.3	31,684	38.6	10,001	20.9	29,546	-1.9	4,766	10.5
Turku	172,534	19.2	8,589	-11.4	25,632	35.3	8,607	22.6	23,558	2.6	4,017	15.6
Satakunta	51,029	2.6	1,365	-26.2	8,146	-22.3	1,925	-40.1	6,349	-10.3	700	23.0
Pori	20,905	-10.0	635	-43.6	2,906	-27.7	1,061	-42.6	2,349	-21.0	450	7.1
Kanta-Häme	29,987	-8.0	2,656	-14.0	3,488	14.0	1,291	-10.6	3,116	-14.5	388	-69.7
Hämeenlinna	14,769	-18.7	1,117	-27.9	1,704	2.8	926	-15.2	1,931	-7.0	192	-63.9
Pirkanmaa	187,722	-15.2	11,889	-10.4	17,634	1.2	10,172	-3.9	20,982	-4.7	6,161	-11.5
Tampere	170,344	-16.7	8,914	-3.6	16,095	0.8	9,848	-2.4	19,274	-5.8	4,914	-23.5
Päijät-Häme	87,840	10.0	12,005	-27.3	6,884	-6.0	4,559	20.4	6,191	-3.9	5,555	93.3
Lahti	69,248	19.3	9,283	-28.4	5,190	-11.4	3,319	20.1	5,613	13.3	4,887	194.6
Kymenlaakso	40,618	-6.0	12,710	-1.1	2,978	-22.1	3,808	11.9	2,451	-8.9	379	-23.4
Kouvola	13,404	1.1	4,174	-3.4	1,672	13.3	383	-15.5	1,239	21.0	163	-6.3
South Karelia	174,281	-0.1	142,374	6.9	3,803	-4.2	1,205	-2.0	4,981	10.7	2,372	52.6
Lappeenranta	85,847	0.4	61,975	15.5	3,079	-0.0	841	-1.9	3,058	9.0	2,169	59.4
South Savo	63,118	5.1	30,081	6.4	4,891	8.2	1,315	-7.7	2,686	8.5	1,477	-34.9
Mikkeli	20,484	-11.5	6,255	-27.1	1,032	-31.6	560	-9.7	1,236	26.4	697	-29.7
North Savo	76,136	4.1	18,830	-15.8	12,456	-6.7	2,288	-18.0	4,062	13.2	9,835	292.5
Kuopio	42,785	-1.6	10,993	-13.9	6,839	-2.8	1,815	-10.1	2,720	11.5	564	-14.0
North Karelia	46,320	-0.7	13,129	-2.5	4,877	-14.8	1,514	-5.2	2,185	-9.3	1,816	227.2
Joensuu	25,440	-8.0	5,632	-8.9	2,678	-18.0	952	-27.2	1,675	-19.3	1,710	279.2
Central Finland	112,781	-13.1	13,173	-22.8	13,010	-14.2	5,315	-7.5	8,155	11.2	2,847	-5.6
Jyväskylä	59,287	-15.6	2,888	-29.3	6,862	-23.3	3,902	-20.5	5,375	3.6	2,085	-1.0
South Ostrobothnia	29,006	17.3	1,992	59.4	1,984	18.8	1,161	89.4	4,389	34.3	616	-11.1
Seinäjoki	11,446	-5.4	367	15.4	920	10.7	405	19.1	1,516	5.8	306	74.9
Ostrobothnia	71,338	-7.6	1,384	22.8	5,505	5.2	3,910	-0.4	24,850	8.3	585	-26.1
Vaasa	54,536	-11.4	1,154	22.0	3,926	-14.2	2,479	-30.2	21,713	16.4	520	-31.7
Central Ostrobothnia	11,226	14.9	126	-65.9	960	-1.0	478	14.6	1,733	-3.0	122	-16.4
Kokkola	8,943	3.0	124	-48.1	925	-2.6	459	16.5	1,581	-6.4	118	-19.2
North Ostrobothnia	205,739	-4.9	29,756	2.5	27,288	23.6	29,811	-6.0	14,007	-2.5	8,203	-0.3
Kuusamo	85,872	-2.5	23,179	4.0	7,143	99.9	24,282	6.7	1,746	23.0	1,618	-44.9
Oulu	85,581	-1.5	4,927	-9.3	11,066	12.3	3,979	-2.8	10,330	-7.0	4,936	21.3
Kainuu	69,894	-8.7	23,745	2.6	4,504	7.6	1,214	-48.5	1,635	-9.2	16,101	-10.9
Kajaani	7,016	-19.1	1,224	-19.7	844	-10.6	257	-28.0	577	-25.5	154	-14.0
Lapland	1,344,088	4.5	42,408	3.6	135,601	1.0	218,102	-7.5	26,914	11.4	77,536	22.4
Rovaniemi	446,611	6.5	21,237	10.8	25,451	5.8	35,474	-8.2	8,086	12.9	43,195	15.9
Åland	108,762	0.7	1,826	25.3	3,079	-12.4	1,061	54.9	89,477	0.5	75	-37.5
Maarianhamina	73,256	0.0	1,627	30.8	2,047	-17.4	910	50.7	58,563	-0.7	74	-36.2

Appendix table 8.2. Nights spent by non-residents and annual change (%) in hotels in 2019

Region / municipality	France		United States		Japan		Netherlands		Italy		Estonia	
Whole country	296,804	14.9	295,566	6.9	216,948	4.3	198,460	9.1	159,390	13.9	152,866	0.1
Mainland Finland	296,362	14.9	294,814	7.0	216,863	4.3	198,011	9.1	159,089	13.9	150,382	0.4
Uusimaa	83,957	20.8	211,108	3.5	157,746	5.5	74,833	13.3	80,289	13.2	73,553	6.9
Espoo	4,595	45.6	6,796	21.6	4,312	73.0	3,115	-12.9	2,448	-17.5	16,915	40.9
Helsinki	68,186	25.2	176,871	2.9	139,891	4.4	58,554	13.4	65,834	15.2	38,232	-7.0
Vantaa	9,008	-2.5	24,464	3.8	12,112	6.7	8,807	16.8	8,311	19.0	8,874	-8.9
Southwest Finland	5,166	13.0	7,544	-8.1	4,131	-3.5	4,311	-14.8	11,197	112.7	9,456	6.2
Turku	4,350	13.9	6,660	-10.0	1,834	6.4	3,938	-12.3	9,334	118.1	5,669	-0.4
Satakunta	3,093	-0.6	1,396	-12.3	612	10.7	1,402	-13.2	1,669	34.1	1,805	-30.6
Pori	586	-15.8	624	-20.4	335	22.3	553	-24.7	565	-12.7	879	-39.5
Kanta-Häme	1,715	232.4	826	51.0	310	-31.3	417	-12.2	1,186	-8.3	1,439	-38.6
Hämeenlinna	293	-10.9	554	26.2	214	-18.0	254	-15.6	815	5.8	516	-30.6
Pirkanmaa	7,131	-4.7	10,720	-1.8	3,465	-21.2	5,908	-9.3	6,870	1.7	11,027	9.4
Tampere	6,856	-4.8	10,428	-2.7	3,449	-20.3	5,661	-9.3	6,089	-3.5	8,124	5.8
Päijät-Häme	3,457	89.3	2,120	68.4	1,942	5.8	2,000	-18.2	3,064	52.8	4,870	13.2
Lahti	2,550	98.3	1,342	25.0	994	98.0	1,806	-7.9	2,693	72.6	4,316	20.3
Kymenlaakso	702	-0.7	1,448	24.4	329	157.0	1,832	18.0	598	-28.6	4,289	9.4
Kouvola	294	-1.7	314	3.3	222	865.2	150	-19.8	349	-14.9	1,413	-0.1
South Karelia	678	15.3	1,203	10.0	443	22.7	1,306	36.9	2,088	91.7	2,669	-23.9
Lappeenranta	532	28.2	641	4.9	246	52.8	1,137	31.6	1,621	114.4	1,755	-4.2
South Savo	967	6.9	709	-20.8	478	5.8	475	-13.9	3,670	9.0	2,219	12.9
Mikkeli	218	-28.1	235	-11.7	156	-23.2	243	-15.6	614	-43.3	1,318	24.6
North Savo	3,841	291.9	2,901	68.4	704	-2.1	1,638	20.8	1,206	3.9	2,378	-6.6
Kuopio	3,548	426.4	2,474	86.7	357	37.8	1,156	21.4	822	-4.5	1,602	-4.0
North Karelia	831	-26.3	1,015	7.2	457	9.6	1,047	-21.7	1,060	9.5	1,744	25.2
Joensuu	649	-32.7	719	-12.0	333	7.4	534	-22.7	768	4.8	987	58.9
Central Finland	6,257	-13.7	3,935	-10.8	1,639	40.4	8,701	-22.3	2,486	-3.0	15,909	-9.6
Jyväskylä	2,744	-8.5	3,617	-7.0	1,519	44.1	1,715	4.3	2,048	0.6	2,438	14.7
South Ostrobothnia	816	-7.4	916	36.3	693	-5.7	1,022	17.6	2,001	59.1	2,749	10.0
Seinäjoki	354	-7.3	366	-11.8	298	-19.0	741	32.3	673	3.7	1,058	24.6
Ostrobothnia	1,566	-32.9	1,915	-19.1	775	11.5	2,106	-3.6	2,422	-31.3	2,072	-17.7
Vaasa	1,401	-34.7	1,628	-16.8	728	14.3	1,671	-6.8	1,532	-47.7	1,291	-25.4
Central Ostrobothnia	211	11.1	479	-33.3	123	-16.3	1,142	291.1	437	56.1	1,039	-7.9
Kokkola	210	25.7	438	-37.5	123	-12.1	1,134	337.8	396	85.9	447	-40.0
North Ostrobothnia	8,016	-8.0	5,161	-8.5	3,252	-15.2	10,681	-15.1	3,609	0.0	5,801	-15.2
Kuusamo	2,390	-10.8	553	-7.7	778	-59.4	4,914	-20.6	691	-8.1	958	-14.2
Oulu	3,505	-2.6	3,905	-13.6	2,318	39.5	3,532	32.2	2,184	-4.7	3,184	-20.9
Kainuu	5,077	-15.5	554	-25.7	346	-77.9	1,251	27.9	532	-12.8	1,044	7.4
Kajaani	199	29.2	127	-32.8	75	-57.1	544	300.0	125	10.6	455	-25.4
Lapland	162,881	15.3	40,864	42.1	39,418	7.6	77,939	19.2	34,705	5.4	6,319	-19.5
Rovaniemi	39,294	23.9	18,392	36.5	15,545	1.4	7,144	24.1	19,903	13.3	1,960	-19.9
Åland	442	14.2	752	-10.8	85	-22.7	449	-13.3	301	7.9	2,484	-16.5
Maarianhamina	356	14.1	584	-14.9	75	-25.0	375	-8.5	210	-5.0	1,335	-23.8

Appendix table 9.1. Capacity of accommodation establishments and capacity utilization by type of establishment in 2019

Whole year on average	Number of establishments	Number of rooms	Number of bed-places	Occupancy rate of bedrooms, %	Change of room occupancy rate, %-units	Room price, euros (incl. VAT 10 %)
All accommodation establishments	1,184	65,464	161,814	52.5	1.5	108.22
Hotels	637	54,341	119,479	56.1	1.3	110.46
Similar establishments	97	1,925	4,815	24.6	7.1	63.32
Holiday villages	316	7,367	30,264	37.5	1.8	81.41
Camping sites	135	1,831	7,257	34.0	4.3	.
Hostels	44	1,474	3,736	59.4	5.3	44.92

Appendix table 9.2. Capacity of accommodation establishments and capacity utilization by type of establishment, May-August 2019

May-August on average	Number of establishments	Number of rooms	Number of bed-places	Occupancy rate of bedrooms, %	Change of room occupancy rate, %-units	Room price, euros (incl. VAT 10 %)
All accommodation establishments	1,303	68,915	171,992	55.1	2.8	104.90
Hotels	643	55,124	120,915	59.6	2.7	107.44
Similar establishments	107	2,231	5,585	32.6	9.5	67.17
Holiday villages	354	8,331	33,329	37.6	3.2	73.88
Camping sites	200	3,229	12,163	36.7	-0.1	.
Hostels	49	1,603	4,061	62.4	9.1	48.25

Appendix table 10.1. Capacity of accommodation establishments by type of establishment in 2019

	Establishments	Rooms	Bed-places	Caravan places
All accommodation establishments	1,374	70,029	173,504	18,901
Hotels	682	57,285	125,551	1,928
Residential hotel	36	1,641	4,207	32
Conference hotel	88	16,611	31,699	10
Spa	53	7,880	18,717	342
Holiday resort	166	8,022	18,140	770
Urban hotel	222	15,446	30,482	198
Other hotel	117	7,685	22,306	576
Similar establishments	112	2,181	5,538	449
Holiday villages	315	6,258	28,106	1,700
Camping sites	215	2,542	9,951	14,686
Hostels	50	1,763	4,358	138

Appendix table 10.2. Capacity of accommodation establishments by opening season in 2019

		Establishments	Rooms	Bed-places	Caravan places
All accommodation establishments	Total	1,374	70,029	173,504	18,901
	Open year-round	1,112	64,965	158,175	12,464
	Open part of the year	262	5,064	15,329	6,437
Hotels	Total	682	57,285	125,551	1,928
	Open year-round	646	55,723	122,133	1,841
	Open part of the year	36	1,562	3,418	87
Similar establishments	Total	112	2,181	5,538	449
	Open year-round	89	1,695	4,293	274
	Open part of the year	23	486	1,245	175
Holiday villages	Total	315	6,258	28,106	1,700
	Open year-round	243	5,215	24,253	1,262
	Open part of the year	72	1,043	3,853	438
Camping sites	Total	215	2,542	9,951	14,686
	Open year-round	93	810	3,700	8,964
	Open part of the year	122	1,732	6,251	5,722
Hostels	Total	50	1,763	4,358	138
	Open year-round	41	1,522	3,796	123
	Open part of the year	9	241	562	15

Appendix table 10.3. Capacity of accommodation establishments by number of bed-places in 2019

		Establishments	Rooms	Bed-places	Caravan places
All accommodation establishments	Total	1,374	70,029	173,504	18,901
	0 - 49	547	5,909	16,291	10,687
	50 - 99	357	9,111	24,460	4,298
	100 - 249	277	18,379	43,481	2,574
	250 -	193	36,630	89,272	1,342
Hotels	Total	682	57,285	125,551	1,928
	0 - 49	150	2,490	5,152	324
	50 - 99	159	5,418	11,293	621
	100 - 249	205	15,581	32,941	556
	250 -	168	33,796	76,165	427
Similar establishments	Total	112	2,181	5,538	449
	0 - 49	67	909	2,113	221
	50 - 99	38	948	2,422	200
	100 -	7	324	1,003	28
Holiday villages	Total	315	6,258	28,106	1,700
	0 - 49	170	1,409	5,271	706
	50 - 99	82	1,295	5,419	306
	100 -	63	3,554	17,416	688
Camping sites	Total	215	2,542	9,951	14,686
	0 - 49	134	815	2,909	9,383
	50 - 99	66	1,134	4,518	3,091
	100 -	15	593	2,524	2,212
Hostels	Total	50	1,763	4,358	138
	0 - 49	26	286	846	53
	50 - 99	12	316	808	80
	100 -	12	1,161	2,704	5

Appendix table 10.4. Capacity of accommodation establishments by number of rooms in 2019

		Establishments	Rooms	Bed-places	Caravan places
All accommodation establishments	Total	1,374	70,029	173,504	18,901
	0 - 19	621	6,345	23,150	12,888
	20 - 49	364	11,117	29,782	4,101
	50 - 99	172	12,303	28,565	1,367
	100 -	217	40,264	92,007	545
Hotels	Total	682	57,285	125,551	1,928
	0 - 19	108	1,496	3,633	249
	20 - 49	222	7,088	16,093	879
	50 - 99	152	10,947	23,528	393
	100 -	200	37,754	82,297	407
Similar establishments	Total	112	2,181	5,538	449
	0 - 19	69	854	2,461	216
	20 - 49	41	1,193	2,810	227
	50 -	2	134	267	6
Holiday villages	Total	315	6,258	28,106	1,700
	0 - 19	237	2,227	10,071	848
	20 - 49	56	1,632	6,851	595
	50 -	22	2,399	11,184	257
Camping sites	Total	215	2,542	9,951	14,686
	0 - 19	180	1,484	6,032	11,527
	20 - 49	32	810	2,917	2,310
	50 -	3	248	1,002	849
Hostels	Total	50	1,763	4,358	138
	0 - 19	27	284	953	48
	20 - 49	13	394	1,111	90
	50 -	10	1,085	2,294	0

Inquiries

Sofia Pitkänen 029 551 3556

Ossi Nurmi 029 551 2984

Director in charge:

Mari Ylä-Jarkko

liikenne.matkailu@stat.fi

www.stat.fi

Source: Accommodation Statistics. Statistics Finland